

SEAL:

NO. DATE REVISION DESCRIPTION DR.

CLIENT:

PROJECT:

AQUA

**1212 MAIN ST.
SQUAMISH, B.C.**

DRAWING TITLE:

**LANDSCAPE
SHRUB PLAN**

DATE: 15.APR.28

DRAWING NUMBER:

SCALE: 1:150

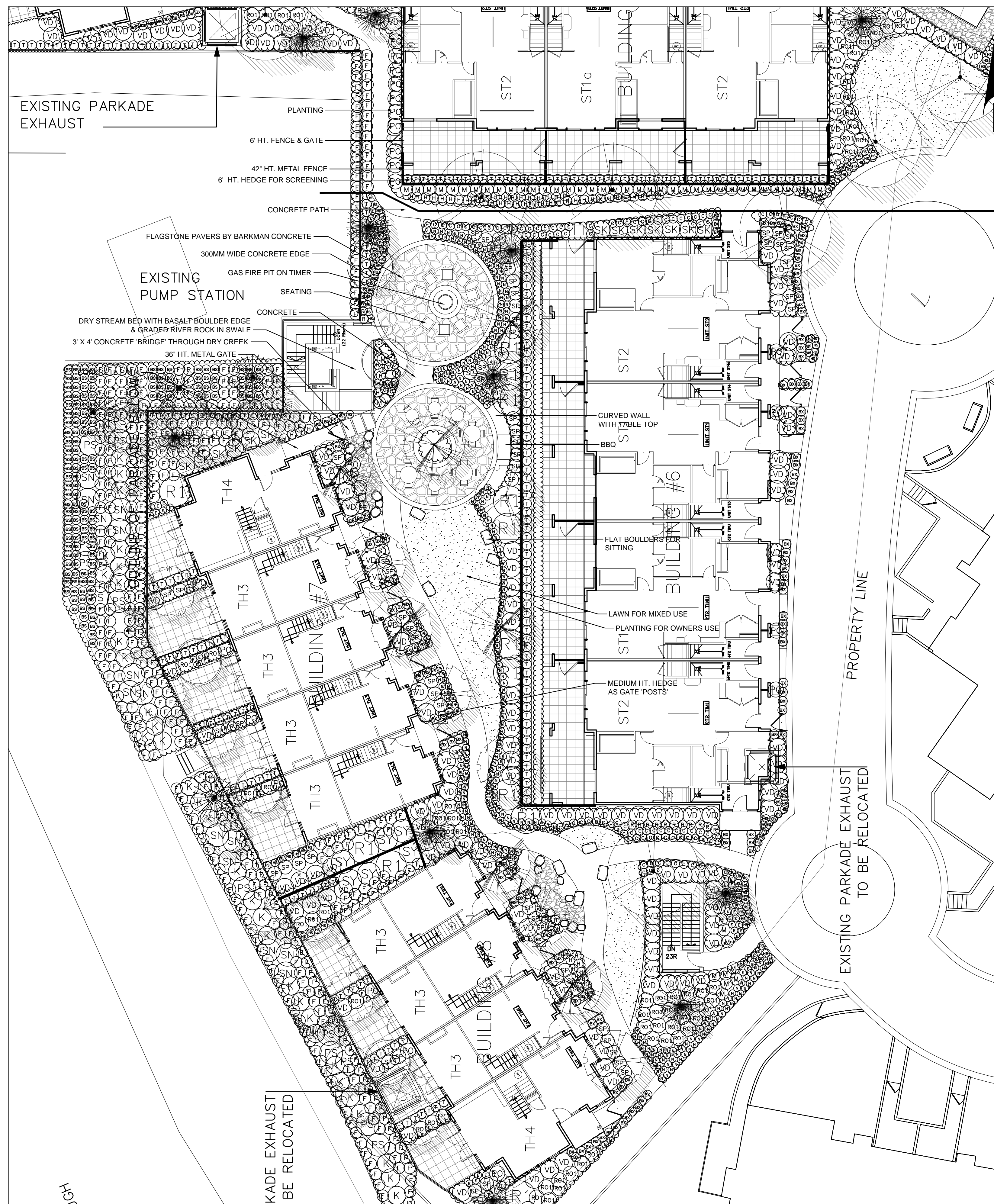
DRAWN: MM

DESIGN: MM

CHK'D: MCY

L3

OF 3



| PLANT SCHEDULE | | PMG PROJECT NUMBER: 15-053 | | |
|------------------|-----|--|-----------------------------------|------------------------|
| KEY | QTY | BOTANICAL NAME | COMMON NAME | PLANTED SIZE / REMARKS |
| SHRUB | | | | |
| BX | 417 | BUXUS MICROPHYLLA 'WINTER GEM' | LITTLE-LEAF BOX | #2 POT; 25CM |
| K | 14 | JUNIPERUS SCOPULORUM 'BLUE ARROW' | BLUE ARROW JUNIPER | 1.0m HT.; B&B |
| PS | 41 | KERRIA JAPONICA 'PLENIFLORA' | JAPANESE KERRIA | #2 POT; 50CM |
| P | 22 | PHILADELPHUS 'SNOWBELLE' | SNOWBELLE MOCK ORANGE | #2 POT; 40CM |
| L | 12 | PIERIS JAPONICA 'FOREST FLAME' | PIERIS, WHITE BLOOMS | #3 POT; 50CM |
| R1 | 46 | PRUNUS LAUROCERASUS 'ZABELIANA' | ZABLES LAUREL | #3 POT; 50CM |
| RO1 | 21 | RHODODENDRON 'ROYAL PURPLE' | RHODODENDRON, DEEP PURPLE, L. MAY | #3 POT; 50CM |
| SN | 151 | ROSA 'DE RESCHT' | DOUBLE PURPLE OLD FASHIONED ROSE | #2 POT; 40CM |
| SK | 23 | SALIX PURPUREA 'NANA' | DWARF ARCTIC WILLOW | #2 POT; 40CM |
| SP | 51 | SKIMMIA JAPONICA (10% MALE) | JAPANESE SKIMMIA | #3 POT; 50CM |
| SY | 193 | SPIRAEA X BUMALDA 'GOLDFLAME' | GOLDFLAME SPIREA | #2 POT; 40CM |
| T | 11 | SYRINGA VULGARIS 'BURGUNDY QUEEN' | LILAC; BURGUNDY-RED | #3 POT; 80CM |
| VD | 379 | THUJA OCCIDENTALIS 'SMARAGD' | EMERALD GREEN CEDAR | 1.5M HT.; B&B |
| GRASS | 280 | VIBURNUM DAVIDII | DAVID'S VIBURNUM | #3 POT; 50CM |
| C | 177 | CAREX 'ICE DANCE' | FROSTED SEDGE | #1 POT |
| HS | 518 | HELICTOTRICHON SEMPERVIRENS | BLUE OAT GRASS | #1 POT |
| N | 308 | LUZULA NIVEA | SNOWY WOOD RUSH | #1 POT |
| M | 49 | MISCANTHUS SINENSIS 'ADAGIO' | ADAGIO MAIDEN GRASS | #1 POT |
| PO | 76 | PENNISETUM ORIENTALE | ORIENTAL FOUNTAIN GRASS | #1 POT |
| PERENNIAL | | | | |
| E | 84 | ECHINACEA PURPUREA 'MAGNUS' | PURPLE CONEFLOWER | 15CM POT |
| H | 64 | HELLEBORUS x HYBRIDUS (COLOUR MIX) | LENTEN ROSE | 15CM POT |
| R | 49 | RUDBECKIA FULGIDA VAR SULLIVANTII 'GOLDSTURMRUDBECKIA; YELLOW' | RUDBECKIA | 15CM POT |
| BS | 246 | BLECHNUM SPICANT | DEER FERN | #1 POT; 20CM |
| F | 757 | POLYSTICHUM MUNIUM | WESTERN SWORD FERN | #1 POT; 25CM |

NOTES: * PLANT SIZES IN THIS LIST ARE SPECIFIED ACCORDING TO THE BC LANDSCAPE STANDARD, LATEST EDITION. CONTAINER SIZES SPECIFIED AS PER CNRA STANDARDS. BOTH PLANT SIZE AND CONTAINER SIZE ARE THE MINIMUM ACCEPTABLE SIZES. * REFER TO SPECIFICATIONS FOR DEFINED CONTAINER MEASUREMENTS AND OTHER PLANT MATERIAL REQUIREMENTS. * SEARCH AND REVIEW: MAKE PLANT MATERIAL AVAILABLE FOR OPTIONAL REVIEW BY LANDSCAPE ARCHITECT AT SOURCE OF SUPPLY. AREA OF SEARCH TO INCLUDE LOWER MAINLAND AND FRASER VALLEY. * SUBSTITUTIONS: OBTAIN WRITTEN APPROVAL FROM THE LANDSCAPE ARCHITECT PRIOR TO MAKING ANY SUBSTITUTIONS TO THE SPECIFIED MATERIAL. UNAPPROVED SUBSTITUTIONS WILL BE REJECTED. ALLOW A MINIMUM OF FIVE DAYS PRIOR TO DELIVERY FOR REQUEST TO SUBSTITUTE. SUBSTITUTIONS ARE SUBJECT TO BC LANDSCAPE STANDARD - DEFINITION OF CONDITIONS OF AVAILABILITY. ALL LANDSCAPE MATERIAL AND WORKMANSHIP MUST MEET OR EXCEED BC LANDSCAPE STANDARD'S LATEST EDITION. ALL PLANT MATERIAL MUST BE PROVIDED FROM CERTIFIED DISEASE FREE NURSERY