

Eagle Mountain – Woodfibre Gas Pipeline (EGP) Project Update

District of Squamish

Carol Greaves, Community Relations Manager
James Lota, Project Manager

October 14, 2014



EGP Project Definition

- FEVI* is studying the feasibility of looping a portion of its Vancouver Island gas transmission pipeline to increase capacity to deliver natural gas to a small scale LNG plant proposed to be developed at the existing Woodfibre plant site west of Squamish
- The proposed loop would begin at the north end of the Coquitlam watershed and end at the Woodfibre site
- In service date November 2016

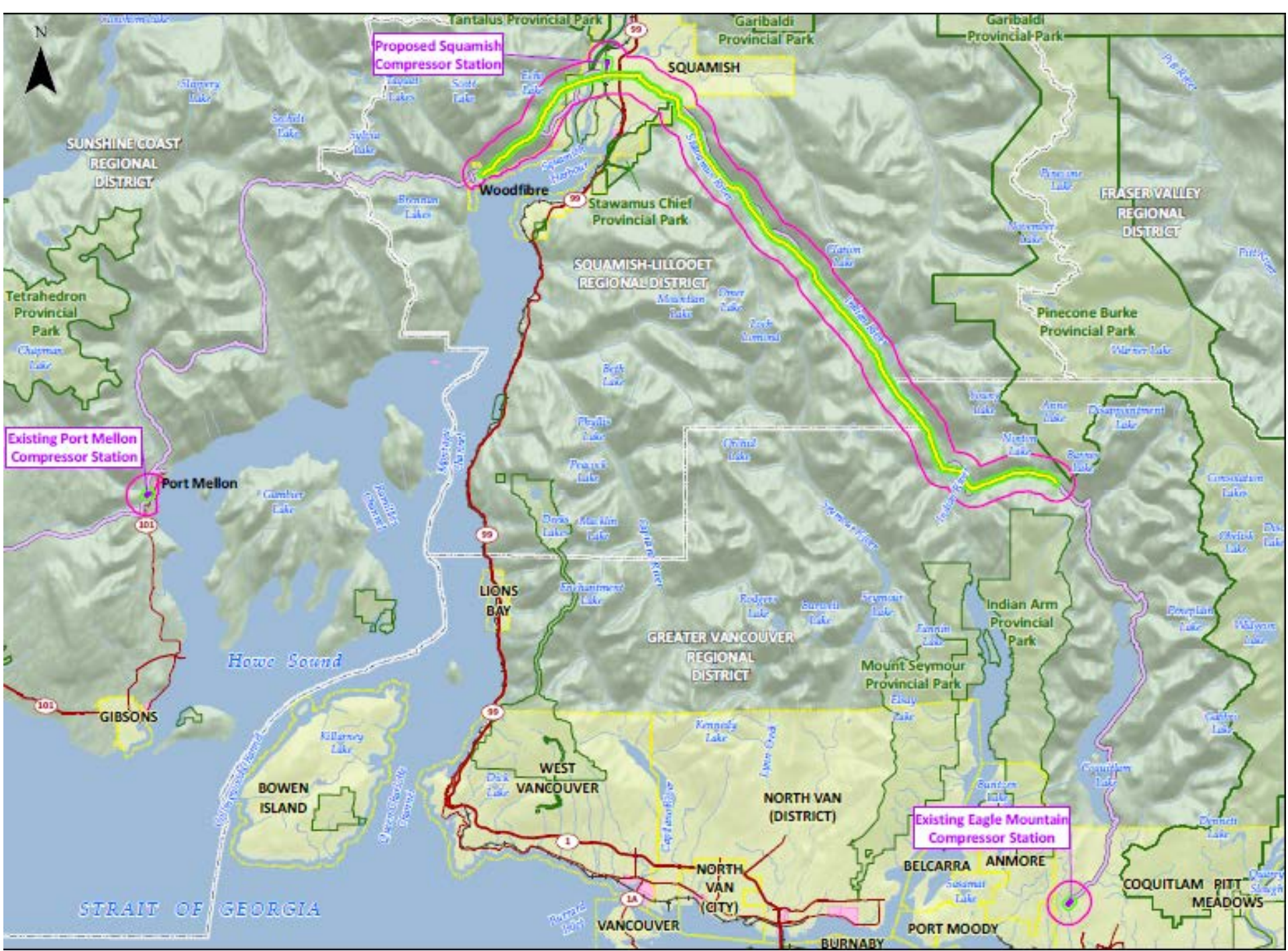
*on or about Jan. 2015, FEVI will become FEI (FortisBC)

Pipeline - NPS 24

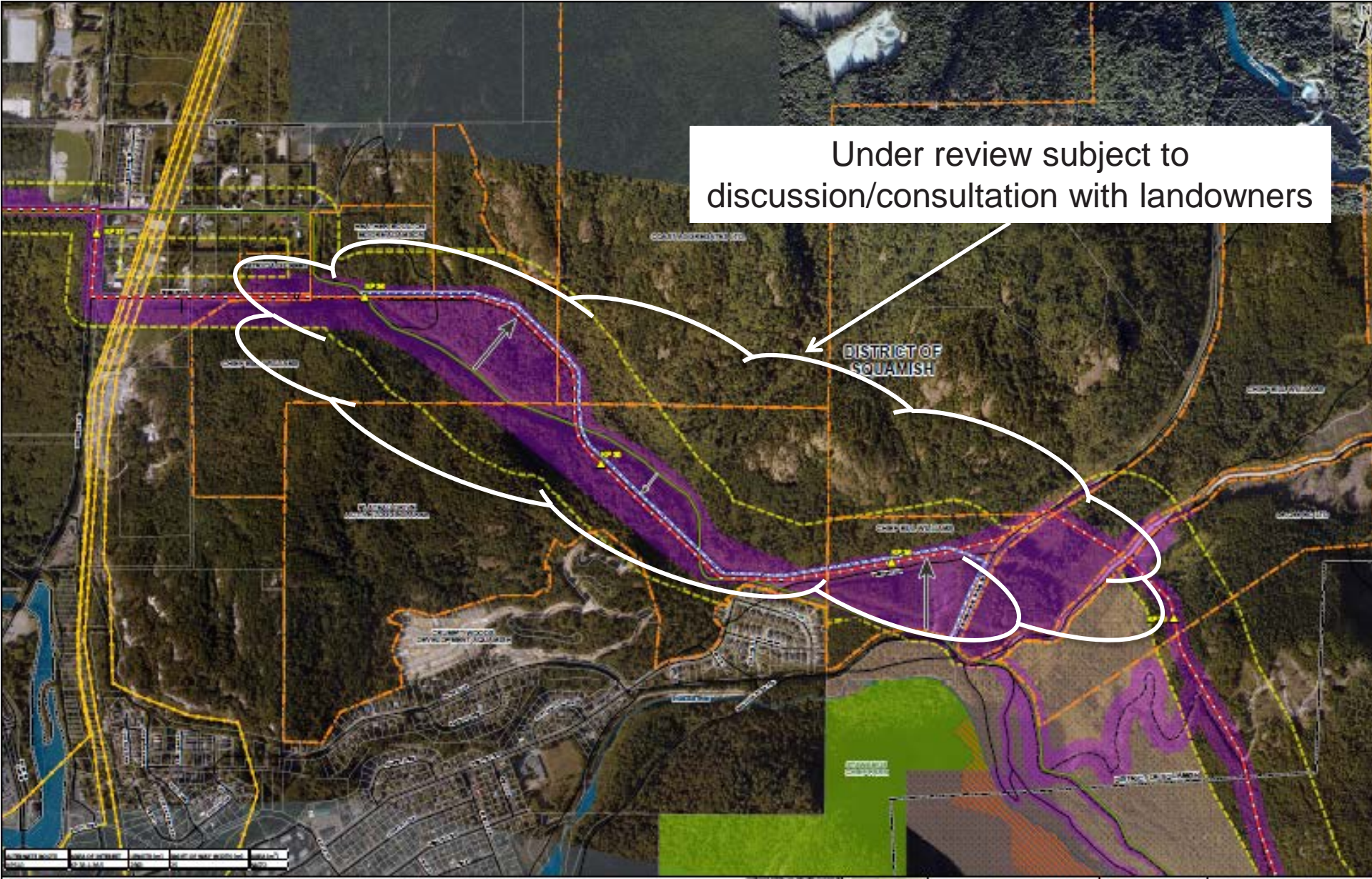
- Approximately 47km long
- Class I and Class III (near Squamish)
- 1.5km trenchless crossing of Squamish River and Estuary

Facilities

- V1B Eagle Mountain Compressor Station
 - 2 x 20,500hp electrically driven compressors
 - 41.5MW electrical service
- V2 Squamish Compressor Station
 - 2 x 16,000hp electrically driven compressors
 - 13.5MW electrical service
 - Underground high voltage power lines
- V3 Port Mellon Compressor Station
 - 6,000 HP natural gas-fired Centaur 50 turbine
- Woodfibre Meter Station

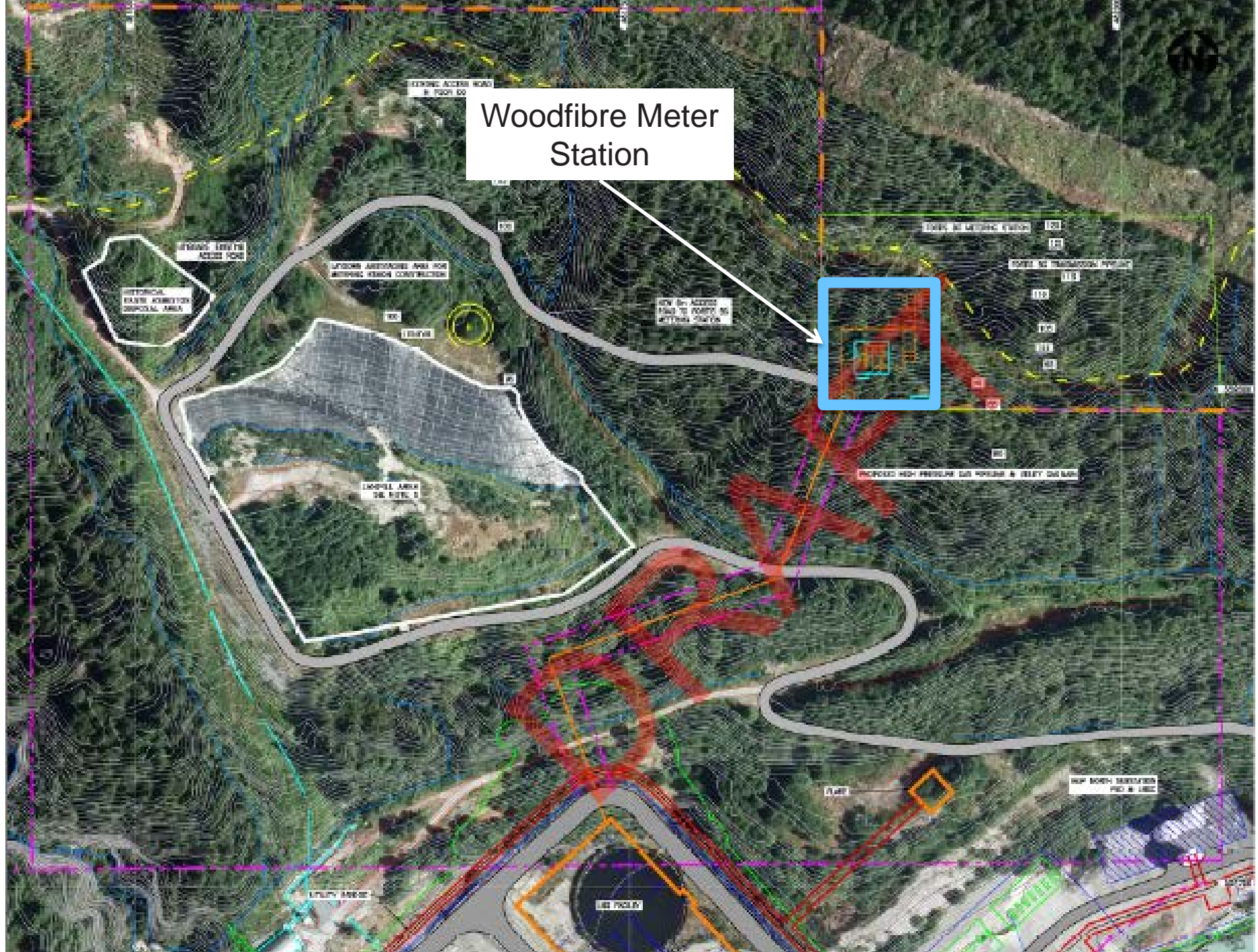


Under review subject to discussion/consultation with landowners





Woodfibre Meter Station

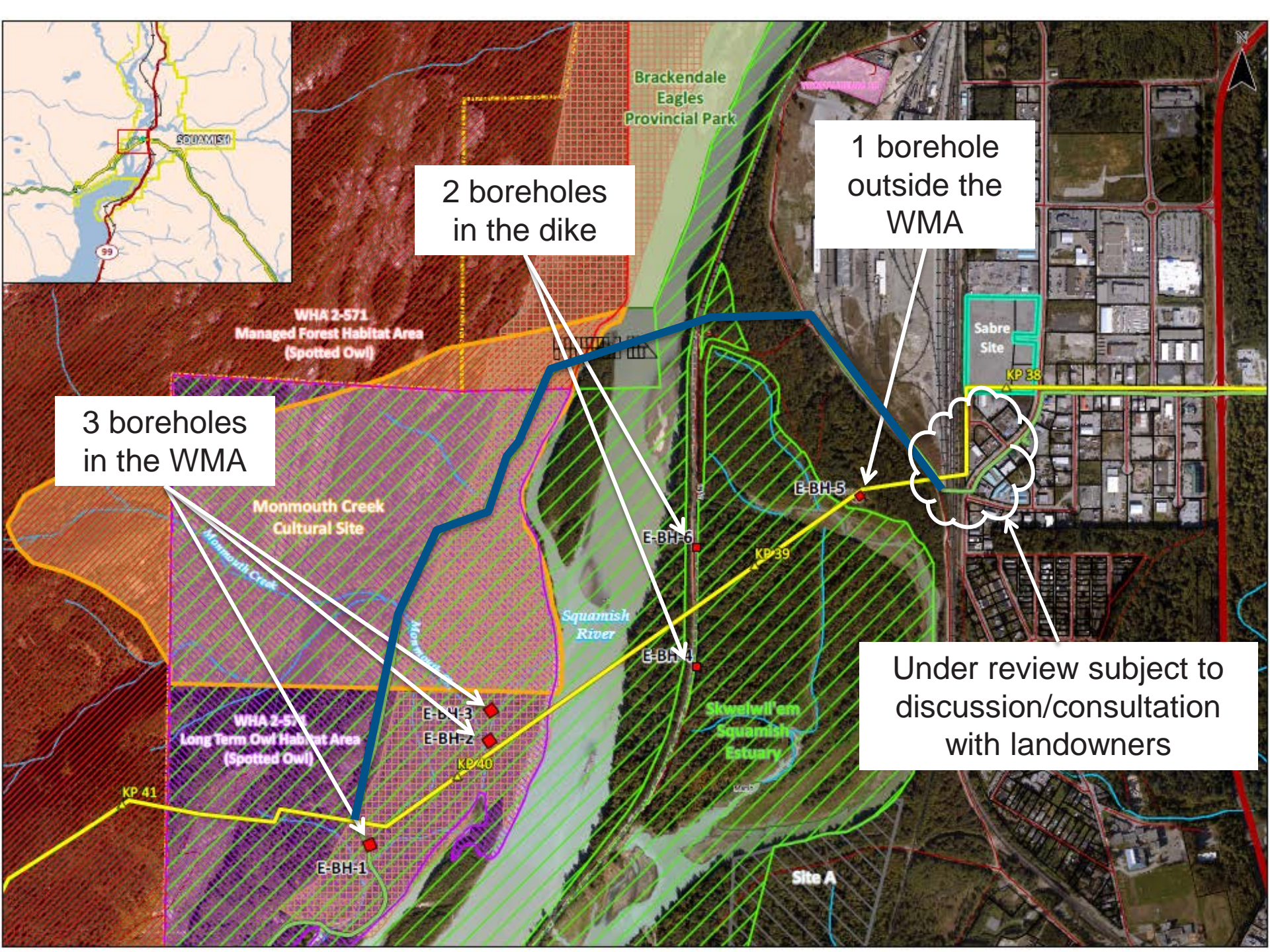


EGP Project Next Steps

- Continue consultation with local governments, First Nations and private landowners
 - Open houses
 - Storefront
 - Project website
 - First Nations Workshops
- Environmental Assessment Certificate
 - Detailed environmental field studies concluded Q3 2014
 - Application to be filed November 2014
 - Approvals expected Q2 2015
 - Working to align EA and OGC requirements for consultation
- OGC permitting and approval
 - Will be filing Q4 2014 to engage synchronous EA process.

Investigative Use Permits (IUP's)

- Geotechnical & Geophysics
 - Estuary – 6 boreholes
 - Industrial Way – 4 boreholes
- Development Permits scheduled to come before Council October 14th
- Also pursuing permits from
 - MoFLNRO
 - 2 boreholes in dike – **Granted**
 - Activity in Wildlife Habitat Area – **Granted**
 - Activity in Wildlife Management Area – Pending
 - BC OGC
 - Activity on Crown Land and Water Use - Pending



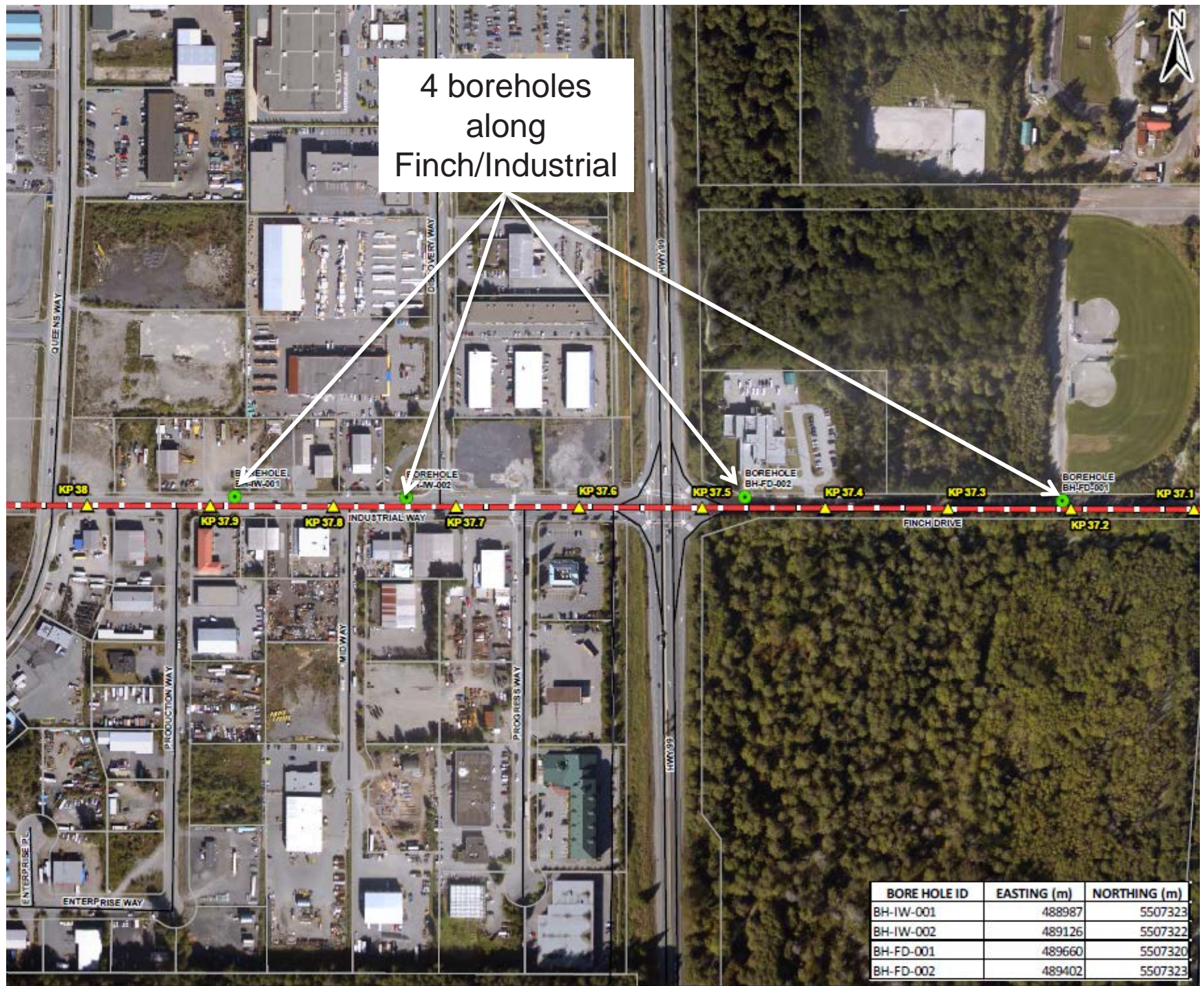
2 boreholes
in the dike

1 borehole
outside the
WMA

3 boreholes
in the WMA

Under review subject to
discussion/consultation
with landowners

4 boreholes
along
Finch/Industrial



BORE HOLE ID	EASTING (m)	NORTHING (m)
BH-IW-001	488987	5507323
BH-IW-002	489126	5507322
BH-FD-001	489660	5507320
BH-FD-002	489402	5507323

Frequently Asked Questions

Will gas be stored in the pipeline?

- No, there will be no long-term storage of gas in the pipeline.
- However, normal operating procedures for gas pipelines serving residential, commercial and industrial customers is to “pack” the pipeline in order to better manage daily and seasonal variation gas loads.

Frequently Asked Questions

Why has the pipe size changed from 20” to 24” since filing of the EA Project Description?

- Hydraulic modeling performed after filing of the Project Description showed going to a 24” pipeline enables a 4% increase in firm gas delivery to Woodfibre. Woodfibre agreed to the extra costs associated with the 24” pipeline in exchange for the increased capacity.
- 220 MMscfd with 20” vs. 228 MMscfd with 24”

Frequently Asked Questions

Will the right-of-way need to be cleared above the pipeline in the Estuary?

- FortisBC recognizes the sensitivity of disturbance in the Estuary and is currently working to revise standards to allow the RoW in the Estuary to remain un-cleared.

Frequently Asked Questions

Is there a potential for the new pipeline to be used to transport oil instead of natural gas?

- No.

Thank you