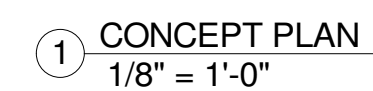


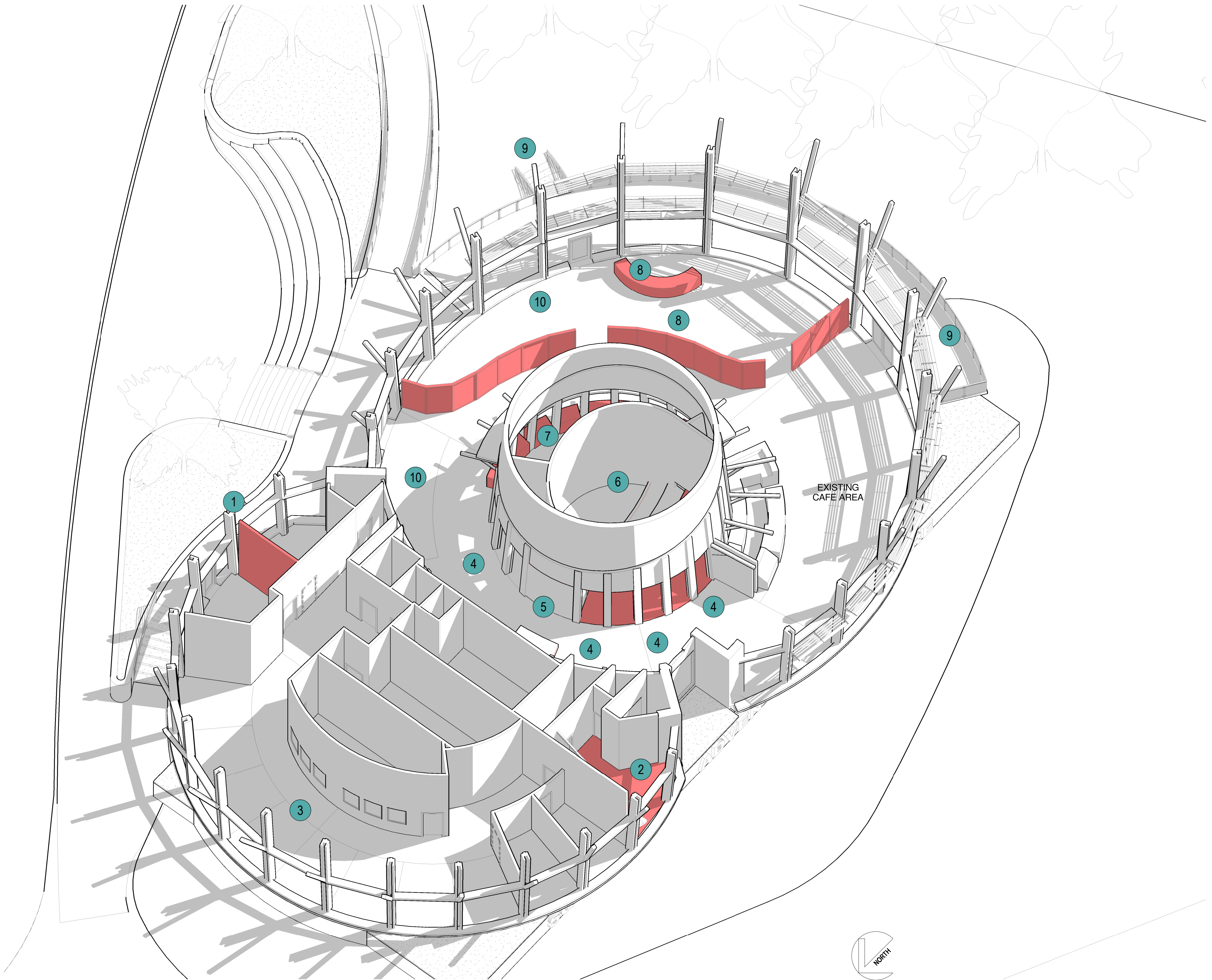
1. DIVERS/STAFF LOUNGE –  
CONVERSION TO TS/CHAMBER  
OFFICES
  - a. REMOVAL OF INTERIOR WALL
  - b. REMOVAL OF KITCHENETTES
2. STORAGE – CONVERSION TO  
MEETING ROOM
  - a. REMOVAL OF COUNTER AREA
  - b. DECOMMISSION OF PUMP
3. OFFICE AREA – CONVERSION TO  
MARKET RENTAL
  - a. NEW STAIR (HOLD - TBD)
  - b. NO OTHER IMPROVEMENTS  
AT THIS TIME
4. SOUTHERN HALL BY THEATRE  
ENTRANCE – CONVERSION TO  
SQUAMISH STORY
  - a. ACTIVATION TBD BASED ON  
TOURISM SQUAMISH
  - b. REMOVAL OF 9 WALL PANELS  
(SEPARATING THEATRE AND  
HALL)
  - c. ROLLER DOORS OR SIMILAR  
TO REPLACE WALL PANELS
5. TS BOH – CONVERSION TO  
SQUAMISH POP-UP SHOP AND VIC  
SERVICE AREA
  - a. EXTENSION OF POP-UP SHOP  
TO MEET THEATRE DOORS
  - b. LOCKABLE STORAGE (TBC)
6. THEATRE – CONVERSION TO MULTI-  
PURPOSE AREA
  - a. LEVEL FLOOR OR  
RETRACTABLE FLOOR
  - b. NEW SEATING
  - c. STORAGE
  - d. AV RECONFIGURATION
  - e. CEILING TILES
7. VIC/KIOSKS AREA – CONVERSION  
TO OPEN SPACE
  - a. KIOSK REMOVAL WITH  
POSSIBLE CONSIDERATION  
FOR SMALL CAFE STORAGE  
AREA
8. GIFT STORE
  - a. REMOVAL OF GIFT STORE  
PARTITION WALL/FLYER  
RACKS
  - b. CONSIDERATION OF  
SECURITY REQUIREMENTS
9. PATIO AREA IMPROVEMENTS
  - a. PARTIAL SHADING
  - b. STAIRWAY TO GRASS AREA
  - c. SMALL PLAY AREA ON THE  
GRASS AREA
10. OVERALL BUILDING  
IMPROVEMENTS
  - a. INTERIOR PAINTING
  - b. REMOVAL OF CARPET IN  
SOUTH NODE
  - c. REFINISH FLOORS
11. SIGNAGE
  - a. FRONT OF BUILDING HWY  
SIGN
  - b. LOGGERS ENTRANCE SIGN
  - c. LOGGERS @ 99 SIGN
  - d. WINDOW  
DECALS/TREATMENTS





**PROPOSED IMPROVEMENTS**  
**2021/09/14**

1. DIVERS/STAFF LOUNGE –  
CONVERSION TO TS/CHAMBER  
OFFICES
  - a. REMOVAL OF INTERIOR WALL
  - b. REMOVAL OF KITCHENETTES
2. STORAGE – CONVERSION TO  
MEETING ROOM
  - a. REMOVAL OF COUNTER AREA
  - b. DECOMMISSION OF PUMP
3. OFFICE AREA – CONVERSION TO  
MARKET RENTAL
  - a. NEW STAIR (HOLD - TBD)
  - b. NO OTHER IMPROVEMENTS  
AT THIS TIME
4. SOUTHERN HALL BY THEATRE  
ENTRANCE – CONVERSION TO  
SQUAMISH STORY
  - a. ACTIVATION TBD BASED ON  
TOURISM SQUAMISH
  - b. REMOVAL OF 9 WALL PANELS  
(SEPARATING THEATRE AND  
HALL)
  - c. ROLLER DOORS OR SIMILAR  
TO REPLACE WALL PANELS
5. TS BOH – CONVERSION TO  
SQUAMISH POP-UP SHOP AND VIC  
SERVICE AREA
  - a. EXTENSION OF POP-UP SHOP  
TO MEET THEATRE DOORS
  - b. LOCKABLE STORAGE (TBC)
6. THEATRE – CONVERSION TO MULTI-  
PURPOSE AREA
  - a. LEVEL FLOOR OR  
RETRACTABLE FLOOR
  - b. NEW SEATING
  - c. STORAGE
  - d. AV RECONFIGURATION
  - e. CEILING TILES
7. VIC/KIOSKS AREA – CONVERSION  
TO OPEN SPACE
  - a. KIOSK REMOVAL WITH  
POSSIBLE CONSIDERATION  
FOR SMALL CAFÉ STORAGE  
AREA
8. GIFT STORE
  - a. REMOVAL OF GIFT STORE  
PARTITION WALL/FLYER  
RACKS
  - b. CONSIDERATION OF  
SECURITY REQUIREMENTS
9. PATIO AREA IMPROVEMENTS
  - a. PARTIAL SHADING
  - b. STAIRWAY TO GRASS AREA
  - c. SMALL PLAY AREA ON THE  
GRASS AREA
10. OVERALL BUILDING  
IMPROVEMENTS
  - a. INTERIOR PAINTING
  - b. REMOVAL OF CARPET IN  
SOUTH NODE
  - c. REFINISH FLOORS
11. SIGNAGE
  - a. FRONT OF BUILDING HWY  
SIGN
  - b. LOGGERS ENTRANCE SIGN
  - c. LOGGERS @ 99 SIGN
  - d. WINDOW  
DECALS/TREATMENTS







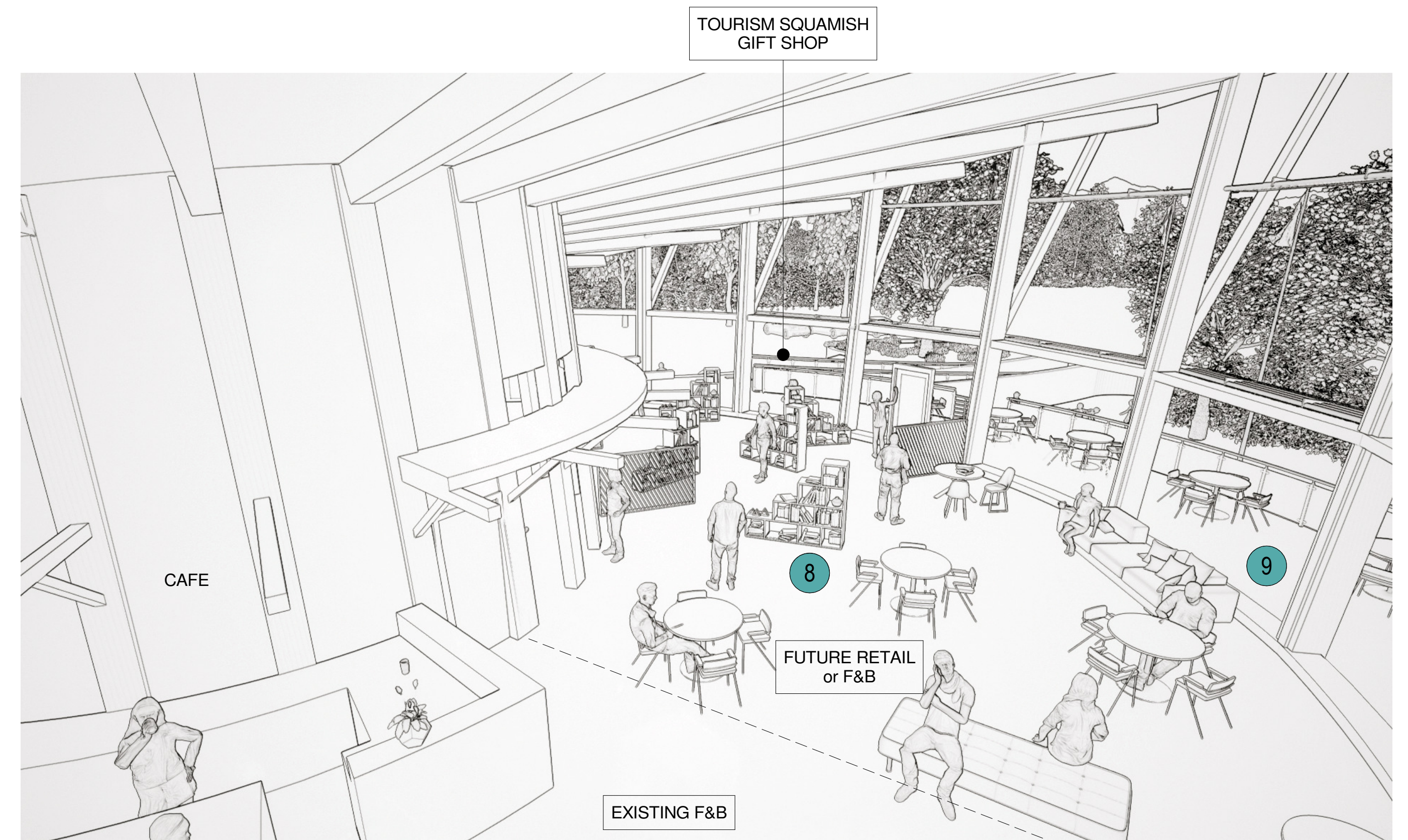
VIEW FROM ENTRANCE TO POP UP SHOP AND SQUAMISH STORY



VIEW FROM ENTRANCE TO OPEN CONCEPT TOURIST INFORMATION AND GIFT SHOP

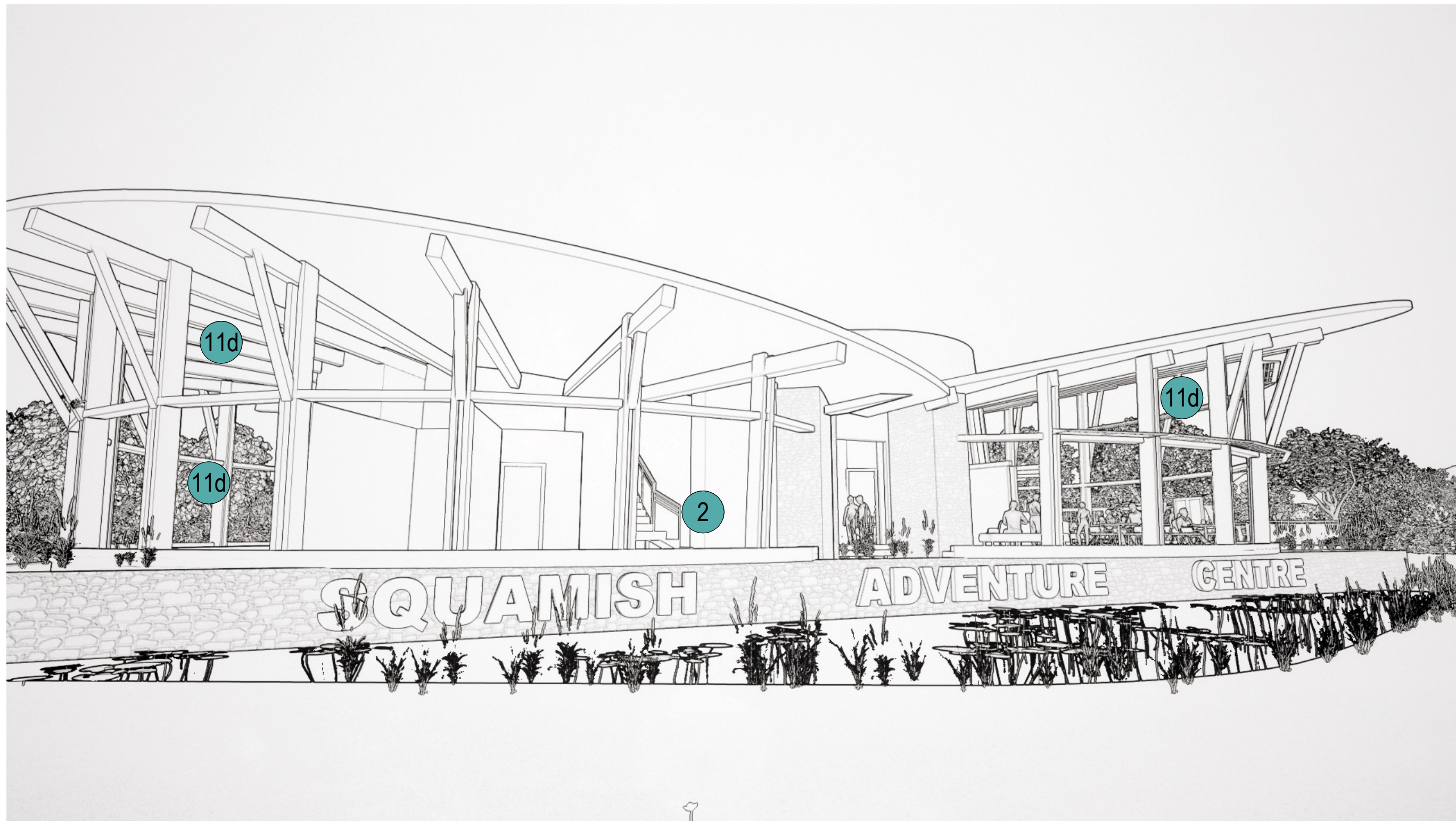


VIEW INTO THEATRE THROUGH NEW OPENINGS FROM OPEN CIRCULATION AND SPILL OUT ZONE



VIEW FROM EXISTING CAFE TOWARDS OPEN CONCEPT TOURISM INFORMATION AND GIFT SHOP (PATIO BEYOND)

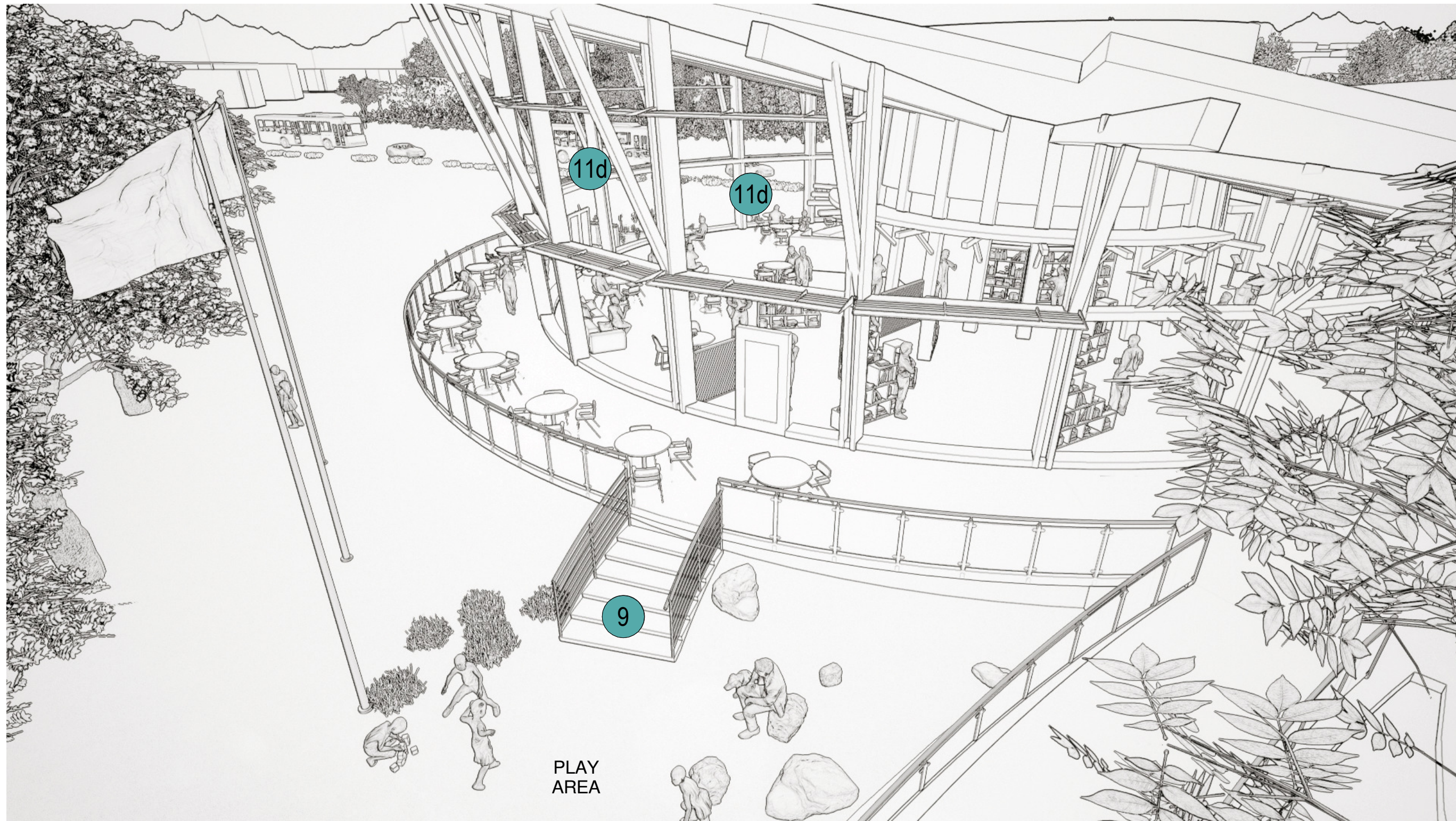




SQUAMISH ADVENTURE CENTRE - WEST HIGHWAY FACADE



SQUAMISH ADVENTURE CENTRE - PATIO IMPROVEMENTS



VIEW FROM ABOVE NEW PLAY AREA AND ALIGNEMENT OF STAIR WITH EXISTING DOOR TO PATIO



APPROACH FROM PARKING - VIEW TO NEW TOURISM AND CHAMBER OFFICE