

# Council Update #6 – IFHMP Coastal Flood Protection Strategy



Resilient Coasts | Lighthawk

# History/Purpose

- Update #1 – Information / initial feedback
- Update #2 – Recommended to adopt coastal strategy (initially endorsed)
  - Regular Council – motion to defer based on Reach 5 alignment / concerns over dike height
- Update #3 – Reach 5 / Dike height discussed. Deferred subject to further review/discussion.
- Update #4 – Council endorsed dike height and sea dike implementation strategy. (Reach 5 not discussed)
- Update #5 – Seeking to finalize Reach 5 alignment and overall adoption of coastal mitigation strategy.

# Reach 5 – Upper Mamquam Blind Channel (Hwy 99 to Smoke Bluffs)

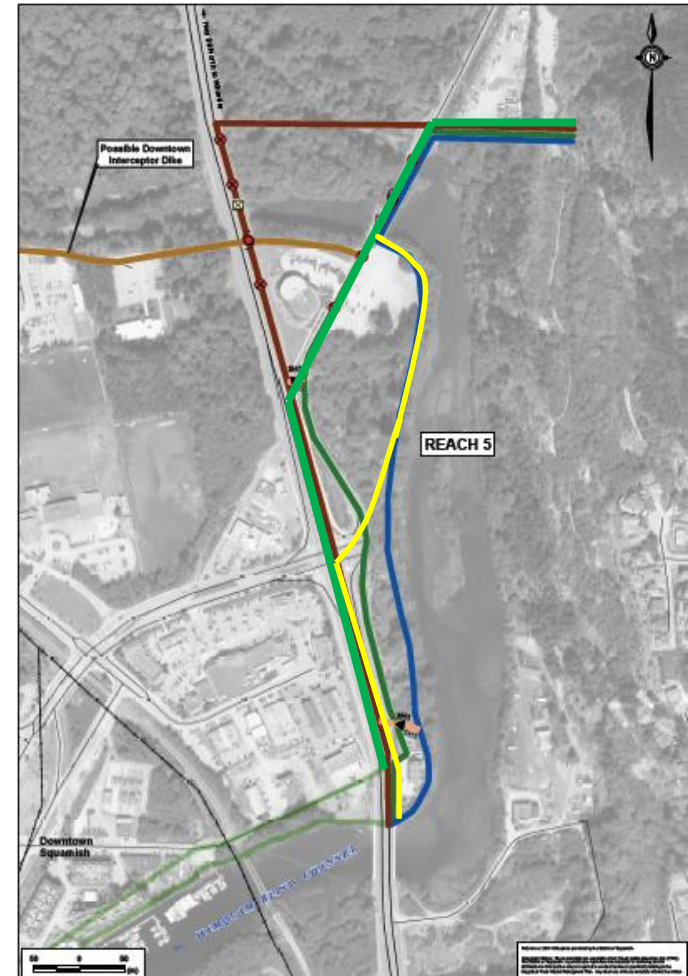
## Short-listed Options:

- 1) Highway/Foreshore Hybrid (yellow)
- 2) Highway/Logger's Lane Hybrid (green)

## • Considerations:

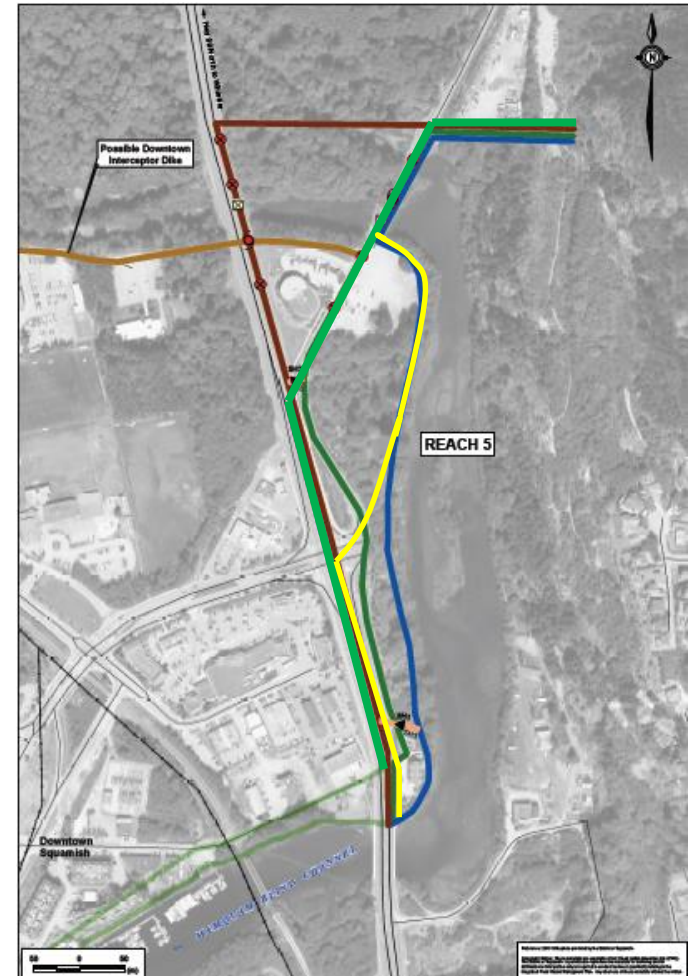
- Area protected
- Cost
- Environmental impact
- Technical challenges (geotechnical, integrating with existing/future development)

## • Decision has trade-offs



# Reach 5 – Recommendations

- 1) Recommended to select a preferred alignment for future planning purposes.
- 2) Recommended to leave as a 'Special Study Area'. Alignment should be confirmed during design phase.
- 3) Select Highway/Foreshore hybrid (yellow) as preferred alignment due to Council feedback on improved land use.



# Questions/Discussion?

