

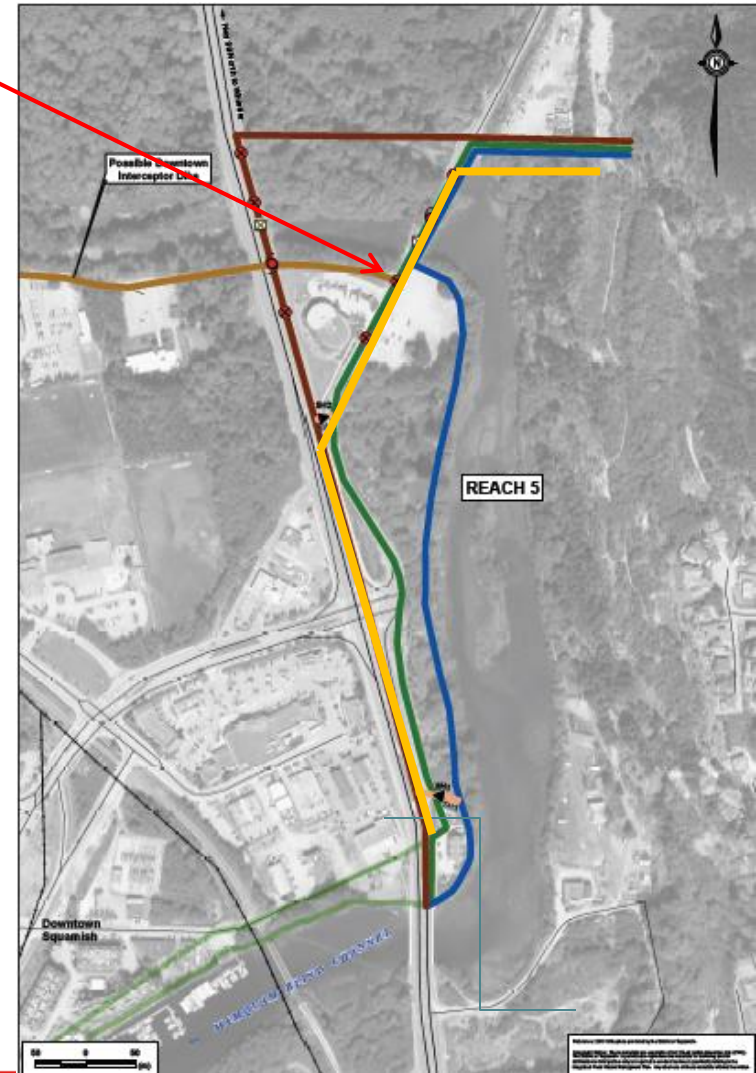
Council Update #4 – Coastal Flood Protection Strategy

Squamish Integrated Flood Hazard Management Plan



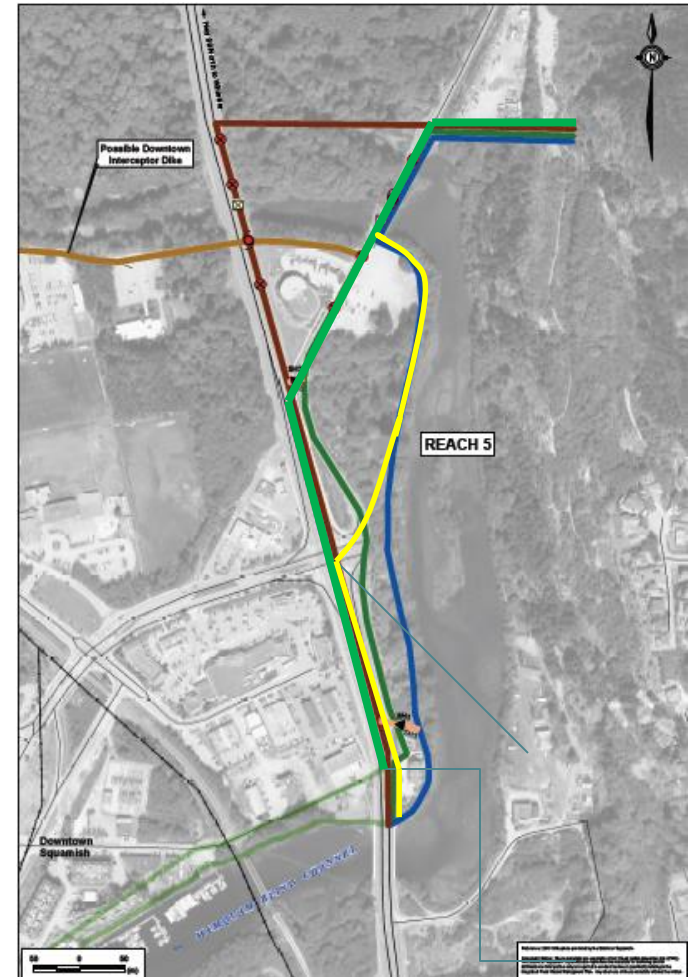
Reach 5 – Upper Mamquam Blind Channel (Hwy 99 to Smoke Bluffs)

- Options: **Previously Recommended**
 - Shoreline – greatest length of new dike/protecting greenspace
 - Highway – least area protected
 - Logger's Lane – minimal benefit south of Cleveland → hybrid makes more sense
 - Hybrid – (benefits/drawbacks below)
- Previous Recommendation: **Hybrid – Hwy 99 to Logger's Lane. Raise Logger's Lane to north MBC – tie to Smoke Bluffs**
- Benefits:
 - Reduces length of new dike = lower cost and environmental impact
 - Less geotechnical challenges
- Drawbacks:
 - Does not protect high value District land



Reach 5 – Upper Mamquam Blind Channel (Hwy 99 to Smoke Bluffs)

- **Alternate Options:**
 - 1) Defer until detailed review with S2S Forestry retains QP & develops mitigation plan
 - 2) Consider new hybrid (in yellow)
- **Considerations:**
 - Protects District land which has proposed uses
 - Dike protection has minimal impact on FCL
 - Significant dike footprint may impact S2S setbacks



Typical Dike Section

