






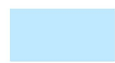

# SQUAMISH

Official Community Plan

## Schedule K-1

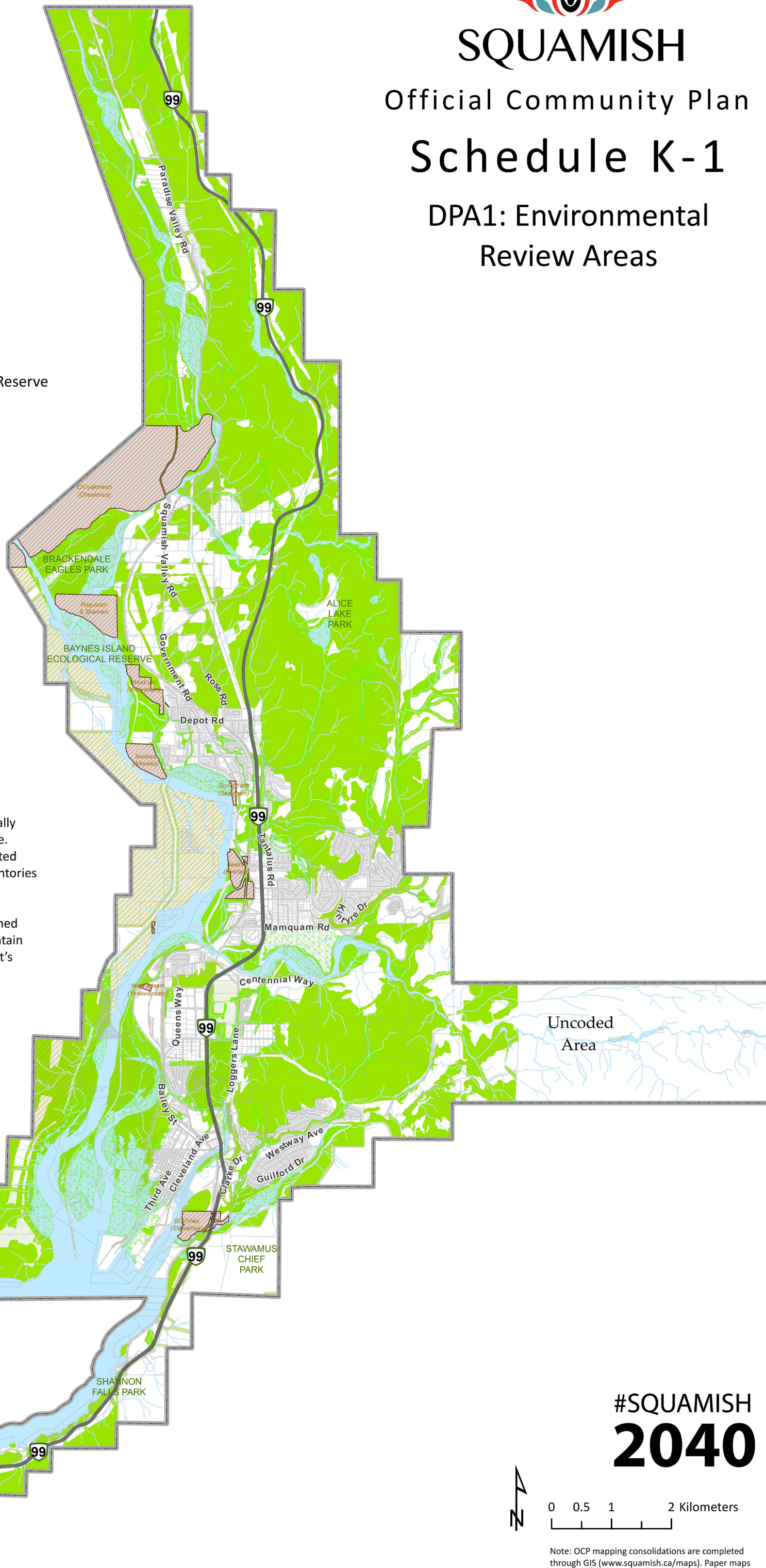
### DPA1: Environmental Review Areas

#### Legend

-  Municipal Boundary
-  Squamish Nation Reserve
-  Wetland
-  Water feature
-  Conservation and Ecological Reserve

#### Development Permit Area 1

-  Environmental Review Areas



Notes:

1. Environmentally Sensitive Areas (ESA) mapping methodology, definitions and results refer to the "District of Squamish Sensitive Ecosystems Inventory (SEI) and Environmentally Sensitive Areas Mapping" report (January 2016).
2. Environmentally Sensitive Areas depicted on Schedule K-1 may not represent all Environmentally Sensitive Areas present within a given area or site. The District of Squamish relies on the most updated information, acquired through site-level bio-inventories and assessments as required for review per Development Permit Area 1. As new information becomes available, and buffer areas are determined by Qualified Environmental Professionals to maintain ESAs, Schedule K-1 will be updated on the District's Geographic Information System ESA map layers, which should be referenced for detailed ESA information over time.

# #SQUAMISH 2040



0 0.5 1 2 Kilometers

Note: OCP mapping consolidations are completed through GIS ([www.squamish.ca/maps](http://www.squamish.ca/maps)). Paper maps are not intended to be regularly updated with adopted OCP amendments.