

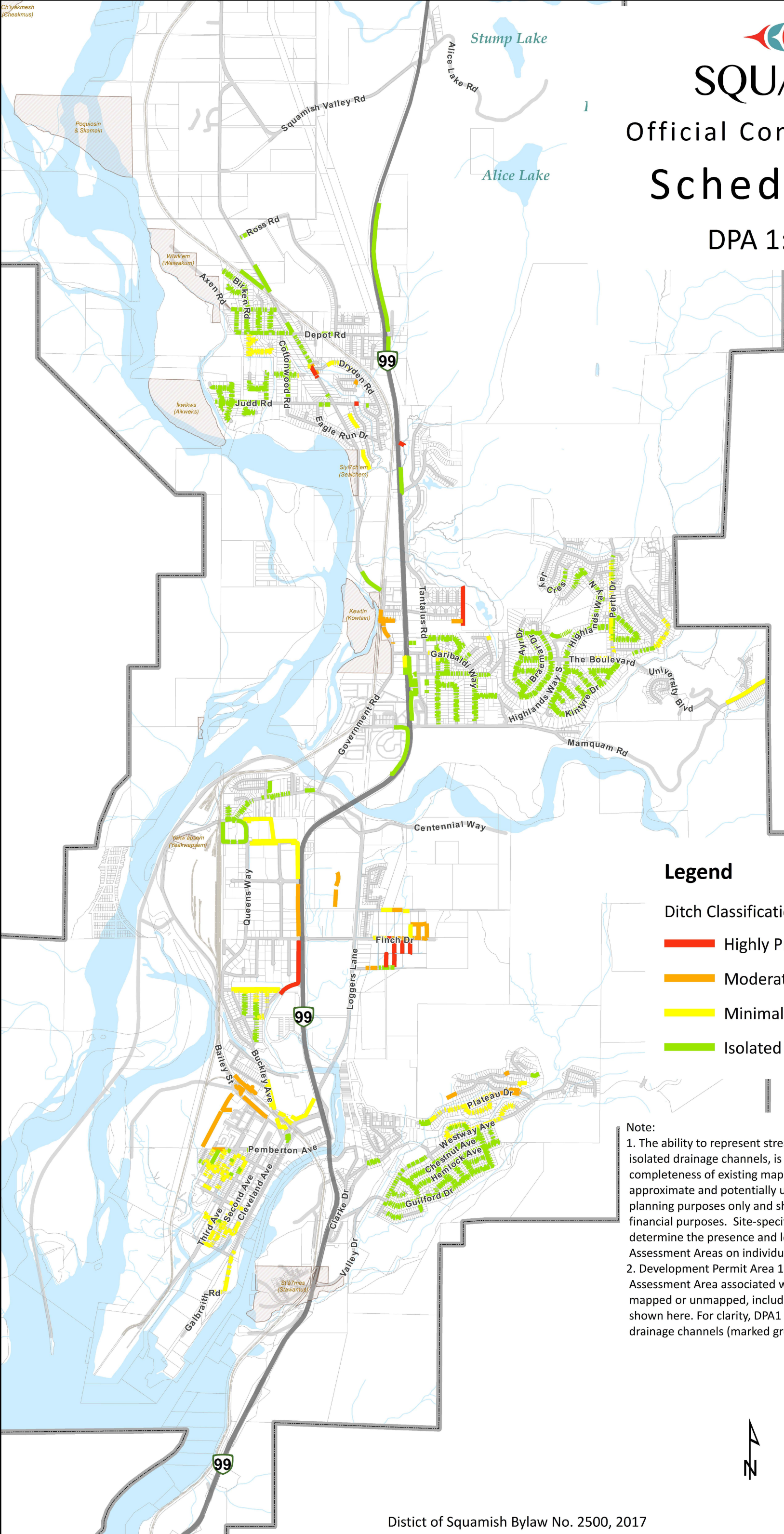


SQUAMISH

Official Community Plan

Schedule K-3

DPA 1: Ditches



Legend

Ditch Classification

- █ Highly Productive Habitat
- █ Moderately Productive Habitat
- █ Minimally Productive Habitat
- █ Isolated

Note:

1. The ability to represent streams, including ditches, as well as isolated drainage channels, is limited by the accuracy and completeness of existing mapping. Locations of these features are approximate and potentially uncertain. They are provided for planning purposes only and should not be relied upon for legal or financial purposes. Site-specific investigation may be required to determine the presence and location of streams and Riparian Assessment Areas on individual properties.
2. Development Permit Area 1 (DPA1) includes the Riparian Assessment Area associated with all streams and ravines, whether mapped or unmapped, including but not limited to the streams shown here. For clarity, DPA1 does not apply to isolated drainage channels (marked green).

#SQUAMISH 2040



Note: OCP mapping consolidations are completed through GIS (www.squamish.ca/maps). Paper maps are not intended to be regularly updated with adopted OCP amendments.