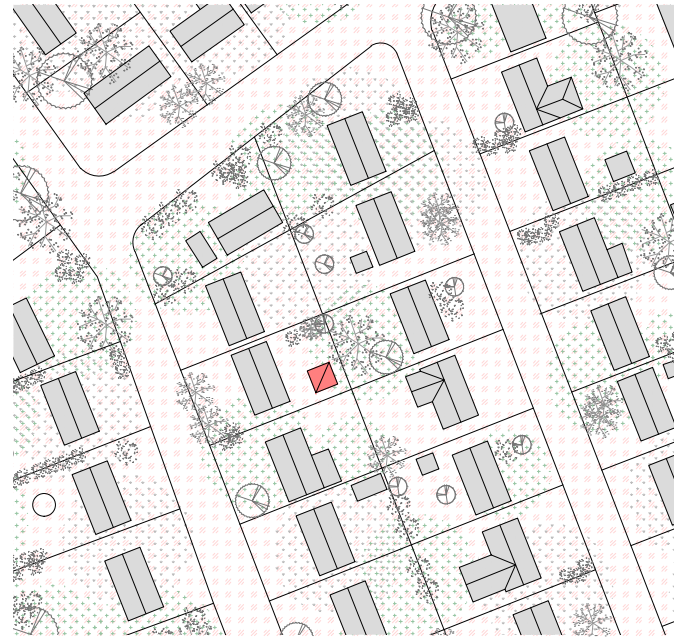


Kâmwâtan “a quite place”

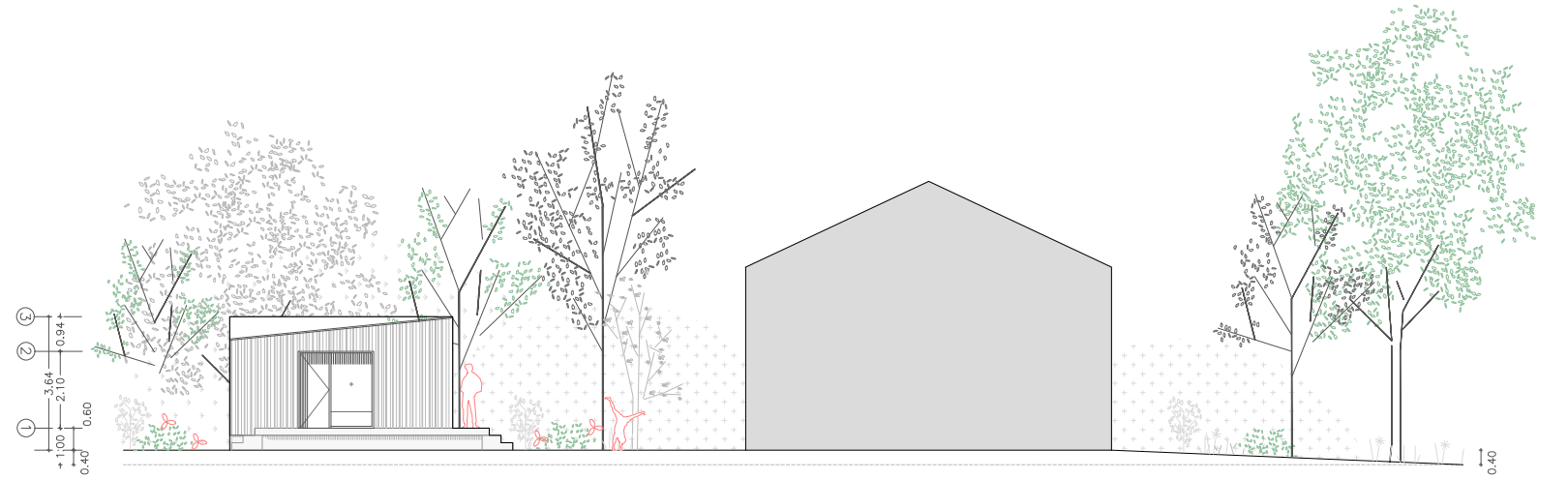
The Kâmwâtan “a quiet space” design offers a compact and visually appealing living space that perfectly balances the ideal door living space, with the maximization of outdoor green space. This perfect square ADU can easily be placed in various locations and orientations to accommodate the homeowner’s needs.

The roof design’s double sloped surface emphasizes the cube effect of this perfect square from all the sides. From the interior, the sloped ceilings help define the space allowing each room to have its own unique feel. The interior doors are specifically designed to be oversized and by adding an exterior ramp, this ADU easily becomes wheelchair accessible. Storage has been designed for multipurpose use, with a built-in bench to be used as additional seating.

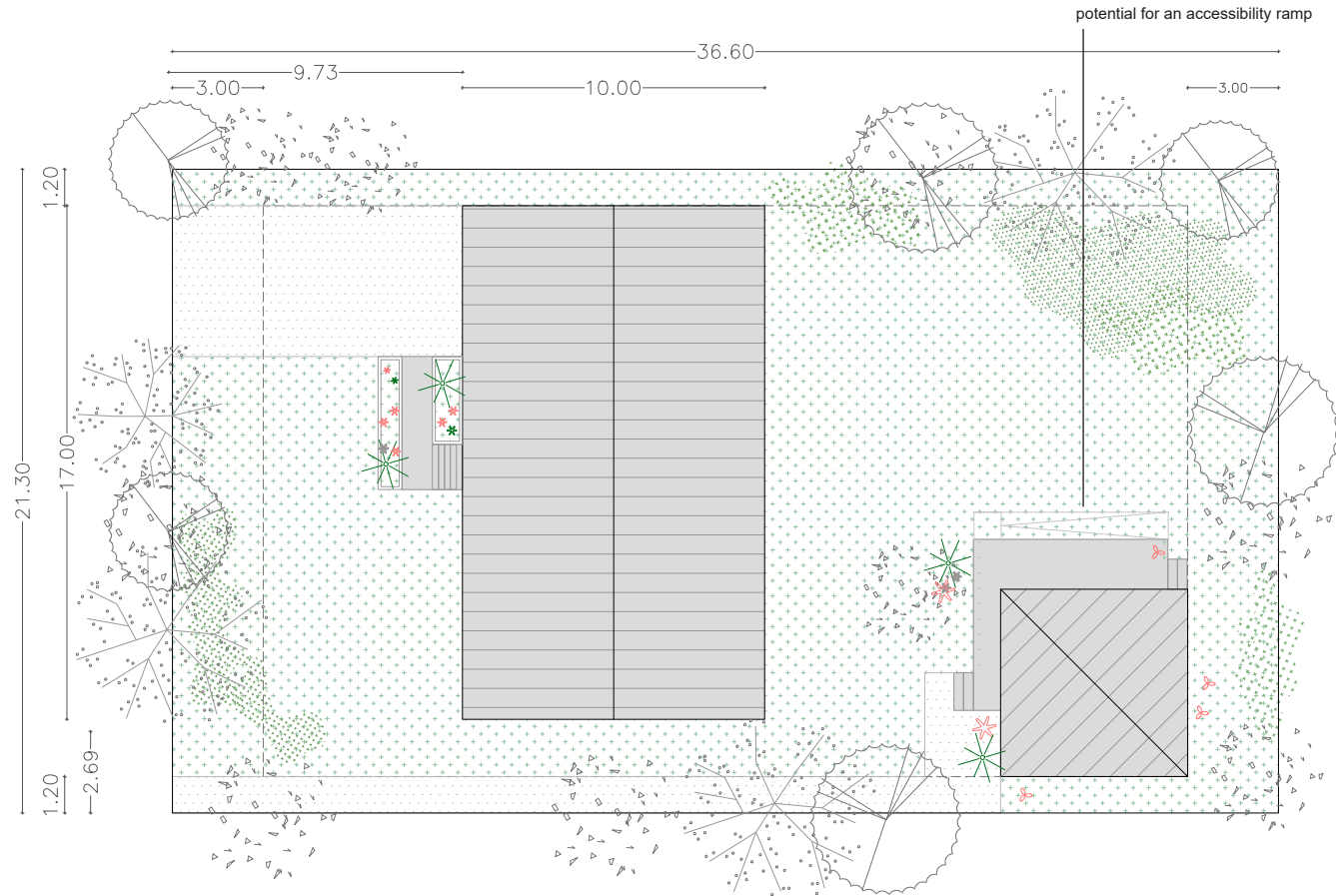
The whole house has been design using prefabricated panels that will bring excelent quality control and will reduce site install time.



Location Plan__e 1/2000

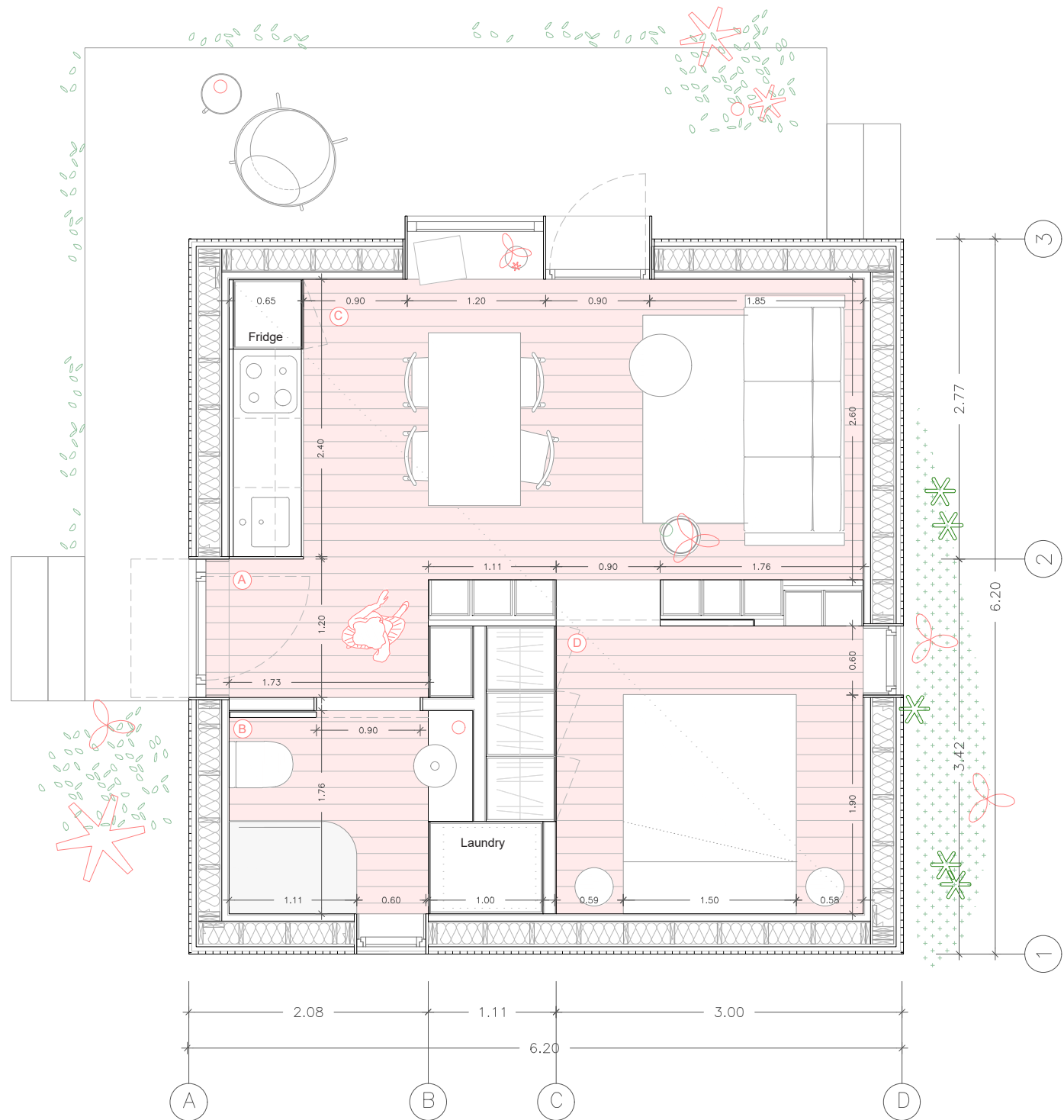


Location Elevation__e 1/200

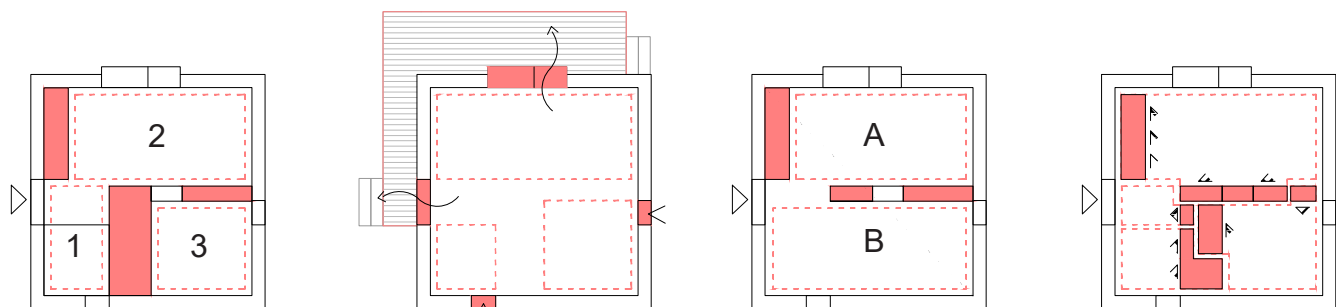


Location Plan__e 1/250





Floor plan_e 1/50



The piece of furniture is organizing the interior in 3 spaces

Smaller windows for privacy in bed & bath / Larger windows for main living and exterior access

Storage provides separation between two living spaces

Optimized for maximum storage.



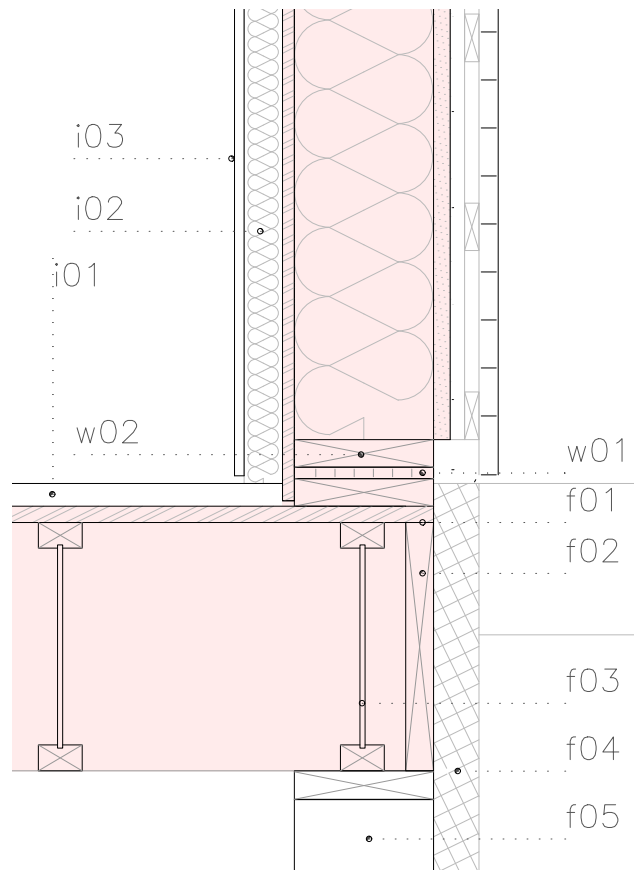
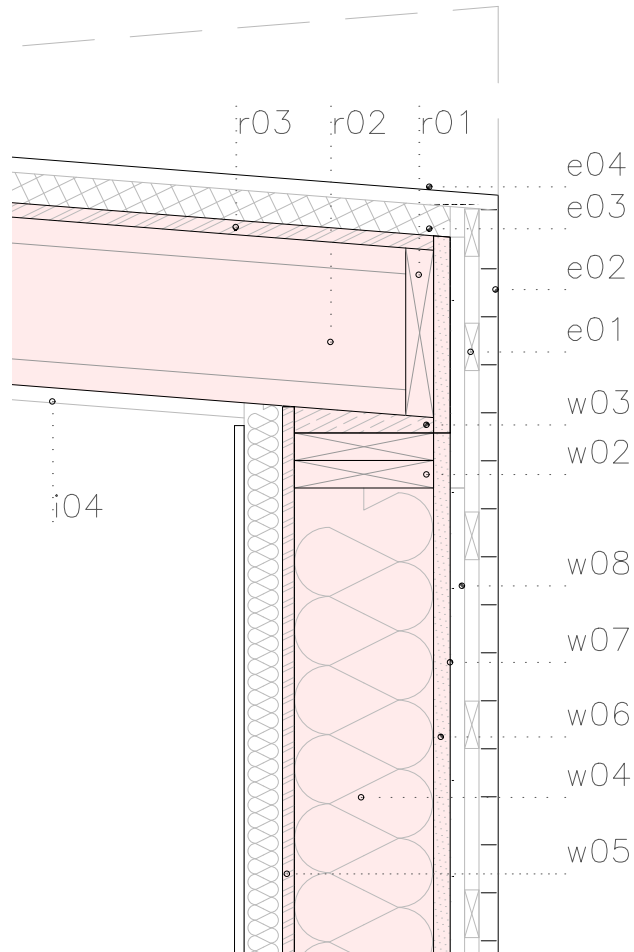
TOTAL GROS AREA 38.92m2
 Gros area 38.42m2
 Exterior porch 1m2 (compute 0.5m2)

TOTAL NET AREA 29.70m2
 (A) Entry 2.55m2
 (B) Bathroom and Laundry 4.35m2

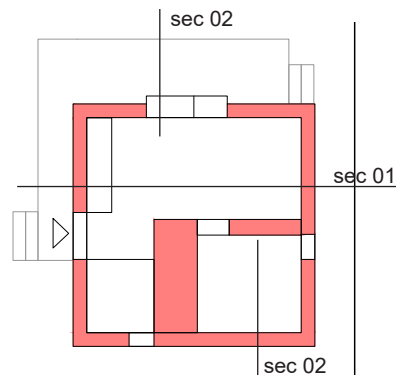
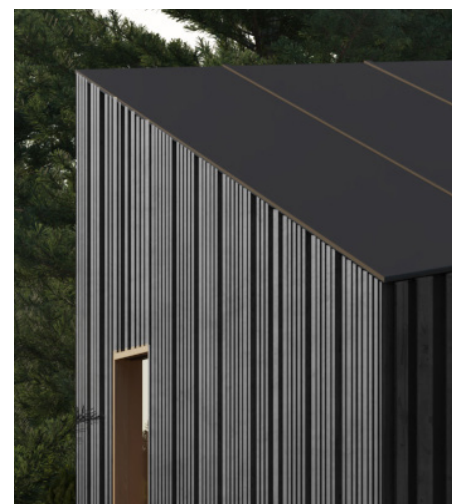
(C) Kitchen and Dining/Living 14.80m2
 (D) Bedroom 8m2

DETAIL LEGEND

w01 Site install plates / **w02** Prefab wall panel top and bottom plates / **w03** Pre-cut shim piece to adjust roof slope / **w04** Prefab wall assembly (SPF 2x8 studs) with blown cellulose insulation (density of insulation tested at shop) / **w05** Prefab wall interior sheathing (plywood), primary air and vapour barrier (taped and sealed at shop) / **w06** Wood Fibre Board / **w07** Prefab wall high performance waterproof membrane WRB (taped and sealed at shop) / **w08** Rain screen as strapping / **f01** Prefab floor panel sheathing T&G / **f02** Prefab floor panel rim board / **f03** Prefab floor panel joists / **f04** Vapour/air barrier (underneath panel) T&G / **f05** Concrete wall / **r01** Prefab roof panel sheathing T&G / **r02** Prefab roof panel rim board / **r03** Prefab roof panel joists with insulation / **r04** Vapour/air barrier (underneath panel) T&G / **i01** Wood floor interior finish / **i02** Service cavity (insulated) back framed to run mechanical/electrical services / **i03** Wall interior finish / **i04** Roof interior finish / **e01** Sub structure for cladding support / **e02** Exterior cladding smoked cedar / **e03** Vapour Barrier + Roof rigid insulation and waterproof membrane

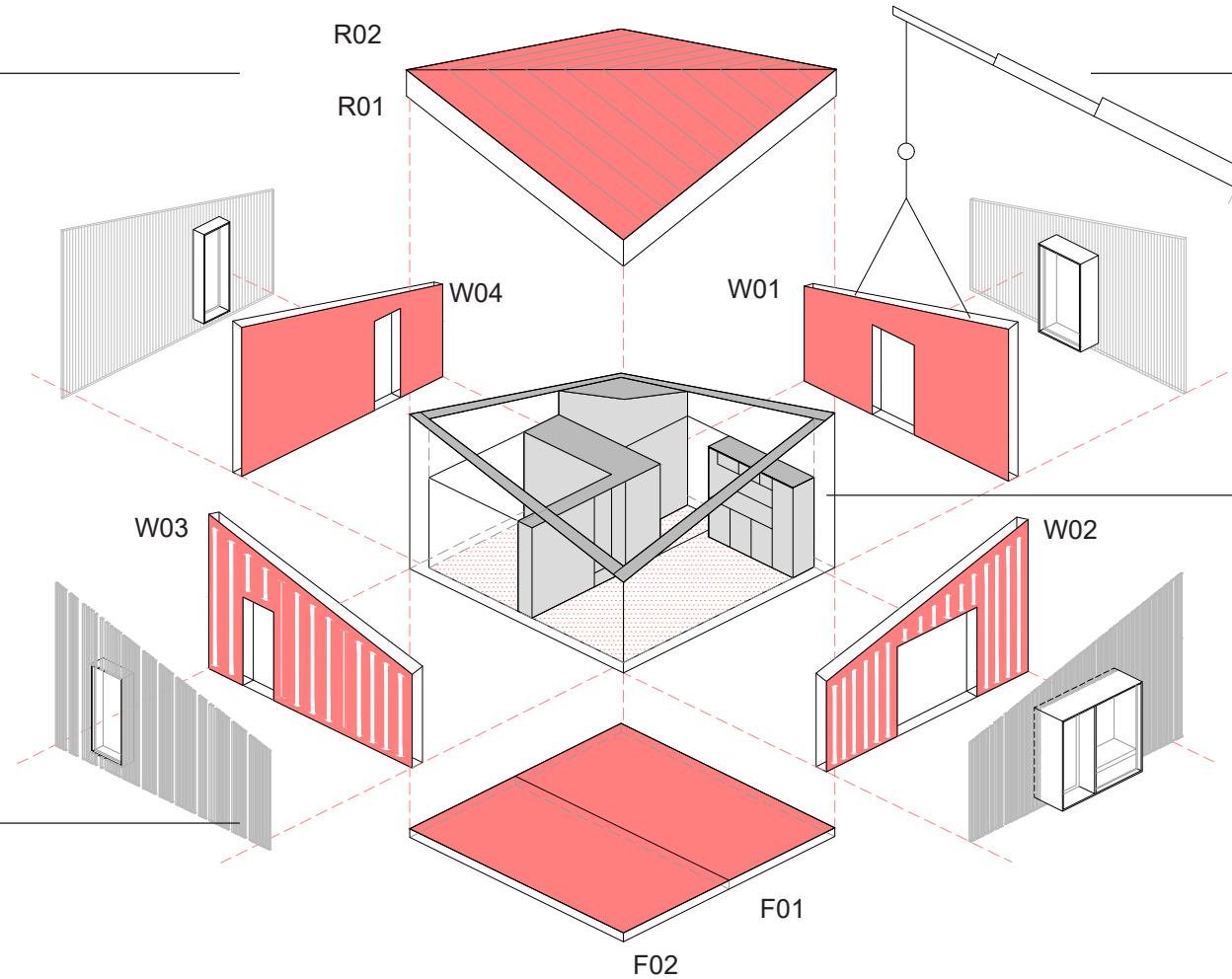


e 1/10__Detail



e 1/150

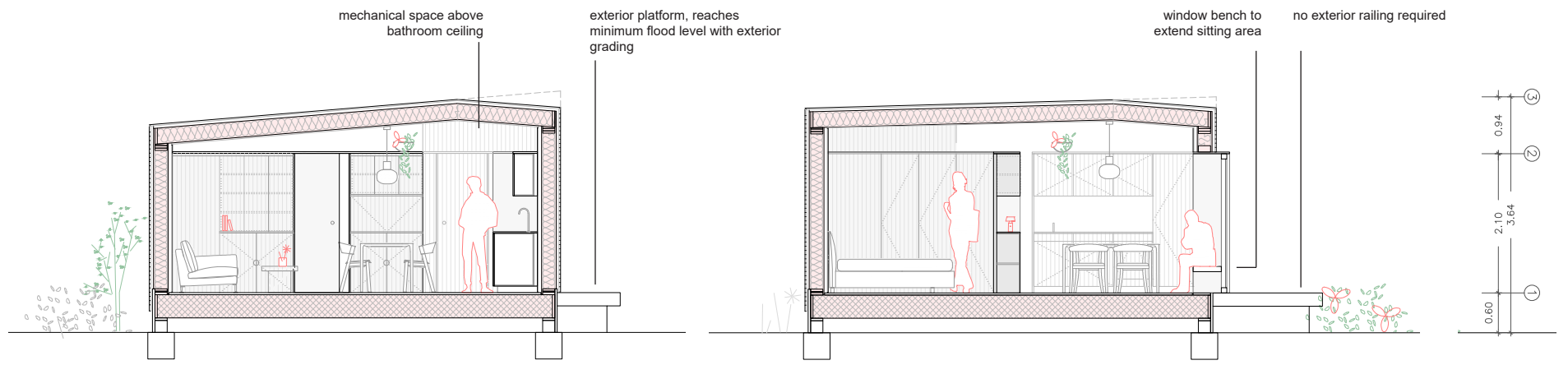
prefabricated panels for roof, walls and floors



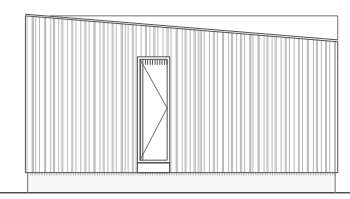
crane located at front lane, prefabricated panels can be easily and safely intalled over the main house

modular exterior cladding and windows install

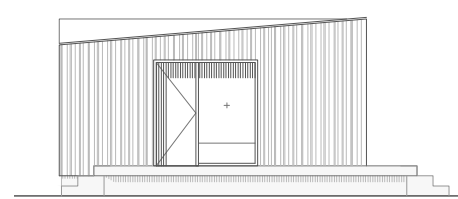
interior cabinets, closets, bathroom and kitchen



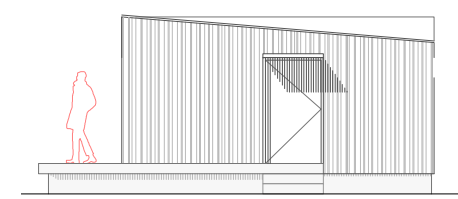
e 1/75



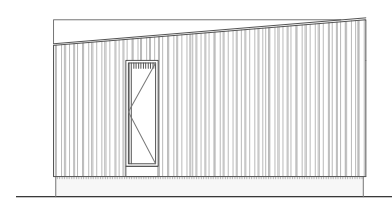
elevation 01



elevation 02



elevation 03

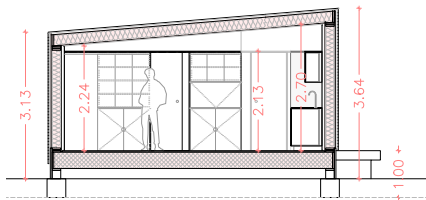


elevation 04

Kâmwâtan “a quite place“

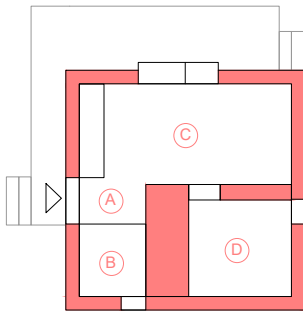
The Kâmwâtan “a quiet space” design offers a compact and visually appealing living space that perfectly balances the ideal door living space, with the maximization of outdoor green space. This perfect square ADU can easily be placed in various locations and orientations to accommodate the homeowner’s needs.

The roof design’s double sloped surface emphasizes the cube effect of this perfect square from all the sides. From the interior, the sloped ceilings help define the space allowing each room to have its own unique feel. The interior doors are specifically designed to be oversized and by adding an exterior ramp, this ADU easily becomes wheelchair accessible. Storage has been designed for multipurpose use, with a built-in bench to be used as additional seating.



HEIGHT

Flood Construction level	1m (0.40cm ground sloped + 0.60cm platform)
ADU max. Height	3.64m
Interior min. ceiling height	2.13m
Interior max. ceiling height	2.70m



GROS AREA TOTAL GROS AREA 38.92m²

Gros area	38.42m ²
Exterior porch	1m ² (compute 0.5m ²)

NET AREA TOTAL NET AREA 29.70m²

(A) Entry	2.55m ²	(C) Kitchen and Dining/Living	14.80m ²
(B) Bathroom and Laundry	4.35m ²	(D) Bedroom	8m ²



GENERAL DIMENSIONS

Footprint	6.20 x 6.20m
-----------	--------------

KEY FEATURES

- Entry storage
- Kitchen (fridge/food storage/sink/preparation space/electric cooktop)
- Living room connected to exterior deck
- Exterior deck
- Bedroom with closets
- Bathroom + Laundry (nicely integrated)

The design intention is to facilitate fire-resistant exterior finishes such as modular hard board panels (thermal treated cedar Class CC1 as per WUI) with steel roofing (zinc), which require minimum maintenance, however the design can easily be adapted to accommodate for a variety of exterior and interior finishes. In relation to heating and cooling, the recommendation would be for an electric heat pump as this offers the greatest efficiency. We anticipate the construction costs to be approximately \$5000/ per finished m2, which is inclusive of all design, pre-construction and finished build costs.

The floor, wall and roof assemblies have been specifically designed for prefab construction by a local Squamish company. By choosing a prefabricated structure, the client will save time on the overall build schedule and allow for faster final occupancy. Prefab construction also reduces the amount of typical waste found onsite as all materials are accurately 3D modeled prior to being ordered and cut to final dimension. The neighbors will also appreciate the condensed construction schedule with the reduction of onsite noise.

The wall & roof assemblies specified within the design will easily achieve Step Code 5, the highest energy rating under British Columbia's step code with the use of electric appliances and an air sourced electric heat pump. With the use of locally sourced lumber within the structural framing package and by reducing the use of petroleum-based products within the wall assembly (eg: traditional 6mil poly as an air barrier), in my opinion this is the best wall assembly details to allow for both a healthy home and a more environmentally friendly construction practice. The exterior wall sheathing has been specified as wood fiber board which offers additional insulative value and is a low embodied carbon product when compared to more traditional exterior sheathing options.

