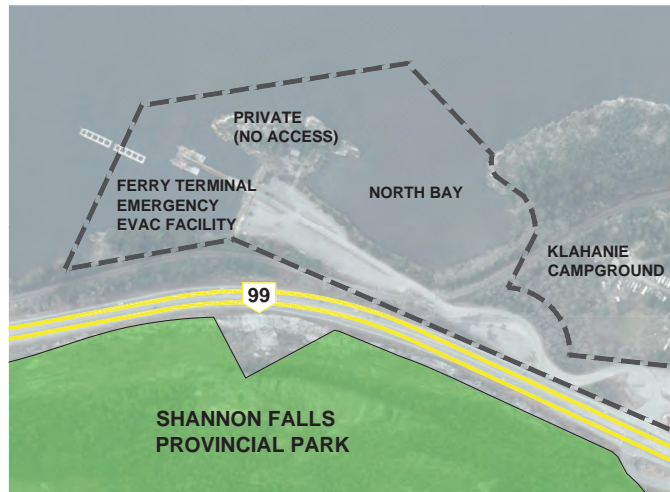
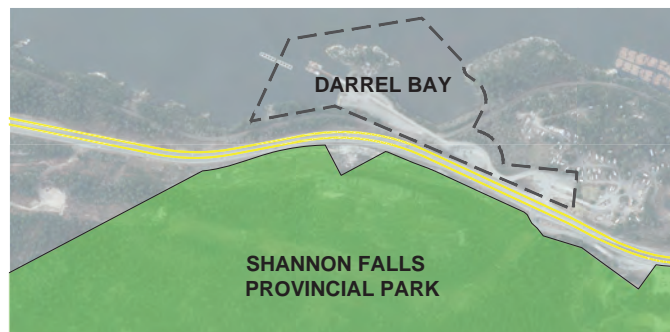


Map 1

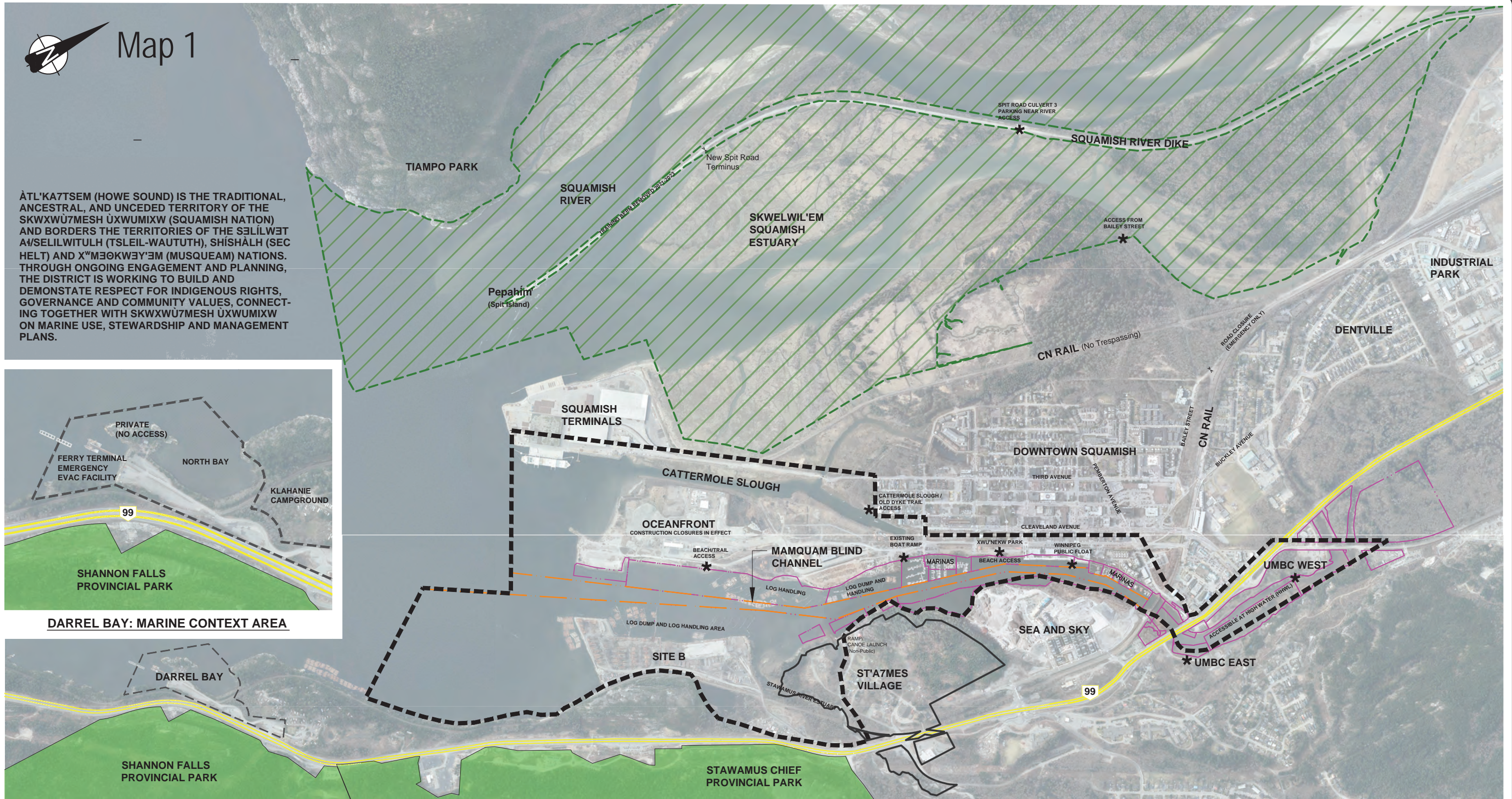
ÀTL'KA7TSEM (HOWE SOUND) IS THE TRADITIONAL, ANCESTRAL, AND UNCEDED TERRITORY OF THE SKWXWŪ7MESH ŪXWUMIXW (SQUAMISH NATION) AND BORDERS THE TERRITORIES OF THE SĀLILWĒT A/SELILWITLH (TSLEIL-WAUTUTH), SHĪSHĀLH (SEC HELT) AND X" MĀŌKWĀY'ĒM (MUSQUEAM) NATIONS. THROUGH ONGOING ENGAGEMENT AND PLANNING, THE DISTRICT IS WORKING TO BUILD AND DEMONSTRATE RESPECT FOR INDIGENOUS RIGHTS, GOVERNANCE AND COMMUNITY VALUES, CONNECTING TOGETHER WITH SKWXWŪ7MESH ŪXWUMIXW ON MARINE USE, STEWARDSHIP AND MANAGEMENT PLANS.



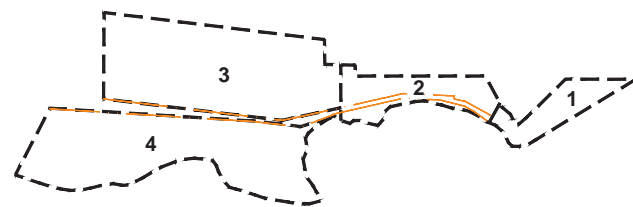
DARREL BAY: MARINE CONTEXT AREA



SHANNON FALLS PROVINCIAL PARK



- LEGEND:**
- STUDY AREA
  - DESIGNATED NAVIGATION CHANNEL
  - EXISTING WATER LOTS
  - DARREL BAY: MARINE CONTEXT AREA
  - ST'A7MES VILLAGE (SKWXWŪ7MESH)
  - SKWELWIL'EM WILDLIFE MANAGEMENT AREA



KEY MAP - SUB AREAS 1-4

The downtown core marine access review study area examines community water access points and infrastructure (existing, interim, planned future) within the Mamquam Blind Channel (upper, mid and lower reaches), and Cattermole Slough (East of Third Avenue). The study area largely comprises marine aquatic areas and a portion of their immediate uplands (parcels adjacent to the water). A broader context area relevant to marine access and activities includes the Squamish Estuary as well as Darrel Bay.

**SQUAMISH MARINE ACCESS REVIEW  
CORE STUDY AREA AND SUB AREAS**

