

PARKING LOCATIONS

Reserved Parking

There are 25 parking stalls located around the building designated for customers visiting the Centre:

- 6 directly in front of the building (2 hour max)
- 4 directly behind the Centre on Summit View Drive (4 hour max).
- 15 underground parking stalls beneath the building, accessible via Summits View Drive (4 hour max).

Accessible parking

- 1 directly in front of the building
- 4 underground.

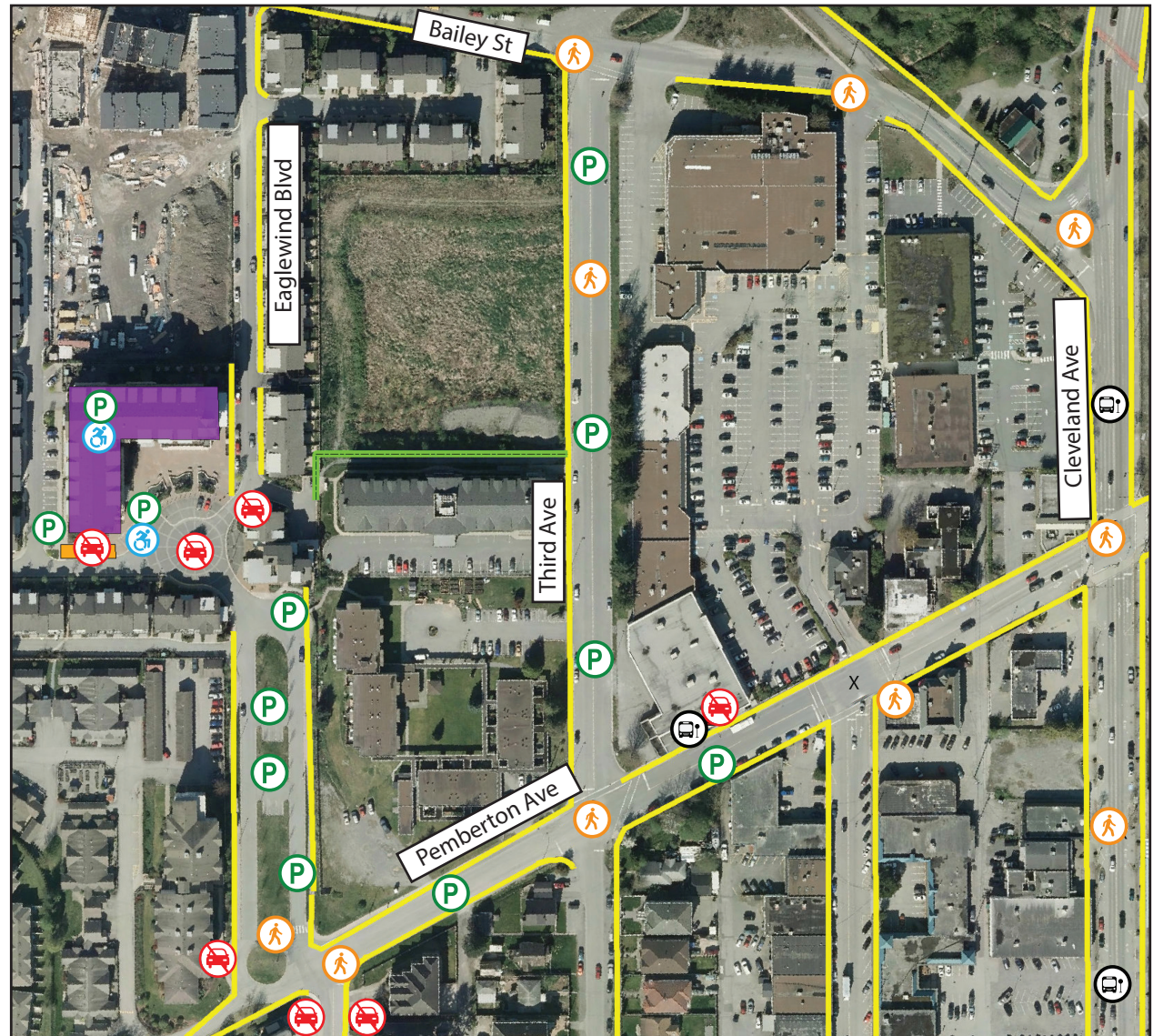
Additional Public Parking

Street parking is available on Eagle Wind Boulevard, Village Green Way, Pemberton Avenue and 3rd Avenue.

An elevator to access the main building during regular hours and special events is located in the underground parking lot.

See map to view all parking locations around the Centre.

Please observe all posted traffic signs.



Legend



Accessible Parking



Parking



Sidewalks



Cross Walk



No Parking



Loading Zone



Bus Stop



Walking Trail



The 55 Centre

ALTERNATIVES TO DRIVING

- 1 Public Transit**
Visit www.transitbc.com/regions/squ/ to view the complete transit schedule.
- 2 Handy Dart**
There is no fee to register with handyDART. For further details please call Squamish Transit at 604-892-3567 or visit www.busonline.ca/regions/squ/accessible/handydart.cfm.
- 3 Bike**
There are bike lock stations located in front of the Centre.

DESIGNATED NO PARKING AREAS:

1. Roundabout
2. Fire lanes
3. Areas with 'No Parking' signs
4. Loading Zone

Please observe all posted traffic signs.

Thank you for your cooperation.

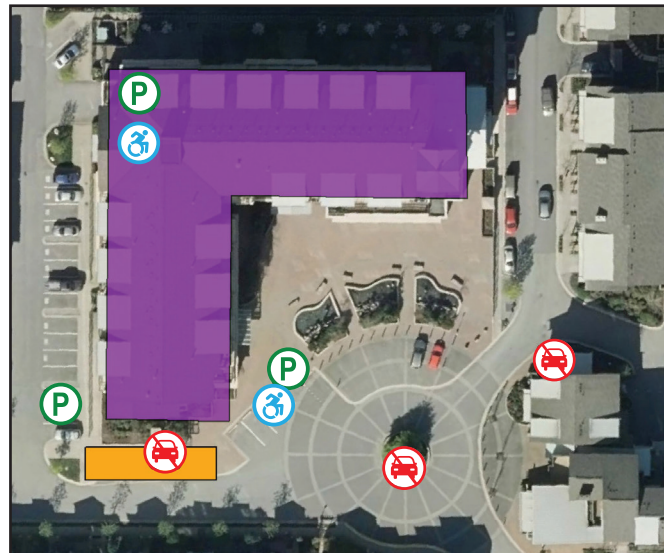
The 55 Activity Centre

1201 Village Green Way, Squamish, B.C.
604.848.6898

Regular Office Hours:

Monday	8:30 a.m. - 4:30 p.m.
Tuesday-Friday	8:30 a.m. - 9:00 p.m.
Saturday	8:30 a.m. - 4:30 p.m.

Closed on statutory holidays



Parking regulations apply to everyone.

Visit us online at squamish.ca/rec and
www.facebook.com/squamishrecreationsservices
Register online at squamishlive.ca



PARKING 101

THE 55 ACTIVITY CENTRE



THE **55** Activity
Centre