

# **Squamish-Lillooet Regional District Solid Waste And Resource Management Plan Focused Amendment**

## **Public Consultation Summary Report “What We Heard”**



Prepared for: the District of Squamish and the Squamish-Lillooet Regional District  
Prepared by: Sue Maxwell, Principal, Ecoinspire Planning  
Final Date: December 4th, 2022



Ecoinspire

## Table of Contents

1. Introduction .....	1
Background and Consultation Development & Objectives .....	1
2. Focused Amendment Initiation .....	3
3. SWRMP Monitoring Advisory Committee (PMAC).....	3
4. Engagement With First Nations.....	4
5. Public Consultation Design.....	5
6. Participation.....	6
7. Promotion and Advertising .....	8
8. Feedback during Public Consultation Process .....	10
Direct Feedback.....	10
Squamish Aerodrome.....	11
Other Local Governments.....	12
Out of Scope comments .....	12
9. Preferred Strategies .....	12
10. Plan Implementation.....	14
Appendix A: Public Engagement Plan.....	16
Appendix B: Full Landfill Information Package.....	27
Appendix C: Pop Up Booths & Landfill Sign.....	31
Appendix D: Letters to First Nations .....	32
Appendix E: Letters to Neighbours.....	37
Appendix F: Newspaper Ads for Public Engagement .....	39
Appendix G: Emails to SLRD Plan Monitoring Advisory Committee .....	46
Appendix H: Email to Let's Talk Squamish Participants.....	50
Appendix I: Feedback .....	51
Comments from the Pop Up sessions and Comment Cards.....	51
Feedback from June 8 <sup>th</sup> Online Information Session .....	53
District Website and Let's Talk Squamish project page - comments & questions .....	53
Direct emails to DoS or SLRD.....	59
Letters from the Squamish Airport Executive.....	61
Email from the Resort Municipality of Whistler .....	66
Out of Scope Feedback .....	67
Appendix J: Endnotes.....	68

**Acronyms**

DoS – District of Squamish

FLNRORD – Ministry of Forests, Lands, Natural Resource Operations and Rural Development

MOECCS – Ministry of Environment and Climate Change Strategy

PMAC – SLRD SWRMP Monitoring Advisory Committee

RMOW – Resort Municipality of Whistler

SLRD – Squamish-Lillooet Regional District

SWRMP – Solid Waste & Resource Management Plan

## 1. INTRODUCTION

This Public Consultation Summary Report describes the public consultation that was undertaken by the Squamish-Lillooet Regional District (SLRD) and the District of Squamish (DoS) in revising the Solid Waste & Resource Management Plan (SWRMP) for a focused amendment to allow for the lateral expansion of the Squamish Landfill and the secondary alternative option of waste-export out of the region. The public consultation meets the requirements outlined in Section 27 of the *Environmental Management Act*, which requires that adequate public review and consultation of the solid waste management plan and amendments must be completed.

### Background and Consultation Development & Objectives

The SLRD's first solid waste management plan was approved by the ministry in 1996. The Ministry of Environment and Climate Change Strategy (MOECCS or "the Ministry") has since approved an amendment in 2004 and updated plans in 2008 and 2019. The current planning process for the focused amendment related to waste management in the District of Squamish (the District), to the 2019 SWRMP, was initiated in 2021.

The District of Squamish Landfill (the Landfill) is forecasted to reach capacity in late 2028/early 2029. Lifespan of the site depends on material compaction, disposal rates and diversion of recyclable material. To ensure continued management of residual waste in Squamish, the DoS assessed three options, lateral expansion of the current landfill, waste-export out of the region, and a waste-to-energy facility.

After careful consideration and deliberation, the District is pursuing a lateral expansion of the Landfill, to the east of the current Landfill footprint. The project will incorporate an upgrade to the current transfer station and the installation of a leachate pre-treatment system.

To move forward with this expansion, the wording in the SLRD's SWRMP must be amended to include explicit approval of the lateral expansion of the Squamish Landfill. Additionally, while not anticipated, it is possible that a lateral landfill expansion will not be feasible due to unidentified constraints. Given the short timeline for when the current landfill is forecasted to reach capacity, waste-export out of the region is the secondary option for waste management for the community, as there will not be time to restart the process of another focused amendment if the lateral landfill expansion cannot be pursued. The focused amendment to the SWRMP is in relation to these two changes. The specific wording of the focused amendment is shown below in Figure 1.



Figure 1 Focused Amendment Wording Change

**SWRMP Reference: Section 15.2: Disposal p.35**

In order to ensure sustained landfill capacity and continued regulatory compliance at all residual waste management facilities, the following activities are planned:

2016 SWRMP Wording	2022 Focused Amendment Change
In order to ensure sustained landfill capacity and continued regulatory compliance at all residual waste management facilities, the following activities are planned:	
a. Expand the landfill laterally to the east. This expansion would provide Squamish with up to 46 years of additional landfill life. However, it may be several years before it is determined whether the lateral expansion is a viable option. For example Squamish needs to consult with Squamish First Nation. This option is also dependent on other expansion options, as described below.	<b>REVISION (proposed)</b> a. The District of Squamish has evaluated short to medium term disposal options, and will move forward with expanding the Squamish Landfill laterally, to the East.
b. Expand the landfill vertically on their existing site by constructing retaining walls at the base of the existing landfill that allow the landfill to be built higher (i.e. a vertical expansion). This option has received approval-in-principle by Squamish Council. This could gain 13-14 years of additional capacity and would only accommodate the needs of current users (i.e. primarily Squamish). Whistler would continue to export their solid waste out of the region.	b. No change
c. If the Squamish Landfill receives approval to expand laterally, Squamish, with support from Whistler, Pemberton, and the SLRD should review the opportunity to designate the Squamish Landfill as a regional landfill. Whistler has indicated their intent to send their waste to the Squamish Landfill on the condition that the site meets BC Landfill Criteria guidelines and that the cost of using the disposal facility is cost competitive with out-of-region options.	c. No change
	<b>NEW CONTENT (proposed)</b> d. If the District is unable to move forward with the lateral landfill expansion, they will expand the current Transfer Station, or site a new one, to facilitate the export of waste out of the region.

Amendments (minor and major) to regional solid waste management plans are guided by the MOECCS' *Guide to Solid Waste Management Planning*, therefore this guide was referenced during the design of the public consultation that the SLRD and DoS pursued for the above focused amendment to the SWRMP. While this guide targets the development of solid waste management plans and major amendments, the team utilized sections of it to direct the tasks associated with a minor (or focused) amendment to ensure compliance with the MOECCS' direction.

The objectives of public consultation associated with this focused amendment were to:

- To ensure requirements under the *Environmental Management Act* are met;
- To ensure the public consultation considerations outlined in the Guide to Solid Waste Management Planning are addressed;

- To provide interested parties with opportunity for input and feedback on the plan, and
- To ensure the amended plan aligns with information gathered during public consultation.

It was advised by the MOECCS that that while the entire regional district must be engaged, because the waste management of the DoS only impacts the Southern portion of the SLRD, the focus of the consultation could be on the Southern portion, while the Northern area could be consulted at an 'inform' level of the IAP2. Care was also taken to highlight that this is a focused amendment and not an update of the full plan. That update will be submitted in 2026 by the SLRD.

## 2. FOCUSED AMENDMENT INITIATION

At the December 15, 2021 meeting, the SLRD Board of Directors authorized the process to be undertaken for a focused amendment to the SWRMP with regards to waste management in the District of Squamish, and for SLRD staff to work with the District of Squamish staff on this project ([minutes](#)<sup>1</sup> item 8.11).

## 3. SWRMP MONITORING ADVISORY COMMITTEE (PMAC)

The purpose of the PMAC is to monitor the implementation of the SWRMP and report directly to the Regional Board. The goal of the PMAC is to ensure the ongoing evaluation, assessment, implementation and updates and/or amendments to the actions and policies outlined in the SWRMP. The PMAC consists of member municipalities, local First Nations representatives, service providers, community groups, citizen representatives, and others. The terms of reference can be seen [here](#).<sup>2</sup>

Throughout the process of consulting on the focused amendment, the PMAC has been kept informed and asked for input, with key requests noted below in Table 1.

Table 1 Dates and Descriptions of PMAC Involvement

Date	Method	Action by the SLRD & DoS
<b>Sep 29, 2021</b>	Meeting	Provided an overview of the focused amendment ( <a href="#">minutes</a> ) <sup>3</sup>
<b>Jan 19, 2022</b>	Meeting	Presented details on the process for a focused amendment, the rationale for it, the timeline and the initial proposed wording changes to the SWRMP, facilitated discussion on it ( <a href="#">minutes</a> ) <sup>4</sup>
<b>Mar 30, 2022</b>	Email	Requested feedback on the Engagement Plan (copy in Appendix G)
<b>Jun 6, 2022</b>	Email	Asked for any further input on the focused amendment (copy in Appendix G)
<b>Jun 27, 2022</b>	Meeting	Update on the progress ( <a href="#">agenda and minutes</a> ) <sup>5</sup>
<b>Nov 18, 2022</b>	Meeting	Review of the Draft Consultation Summary with opportunity for feedback. PMAC's recommended submission of the Focused Amendment to the SLRD Board of Directors with minor edits.

Throughout all the meetings and email opportunities that occurred before November 2022, there was general approval for the focused amendment to the SWRMP and one email from the Resort

Municipality of Whistler was received, in support of the amendment, but no changes were recommended by the committee.

## 4. ENGAGEMENT WITH FIRST NATIONS

As several First Nations are impacted by solid waste management decisions in the SLRD several approaches were taken to ensure that they were consulted, with those where the impact may be higher were engaged at a higher level.

The DoS staff and Council are committed to working with Skwxwú7mesh Úxwumixw (Squamish Nation) to find new ways to engage, plan and collaborate, resulting in meaningful action. That is why it has been a priority to have the Squamish Nation engaged in this project from its initiation. Prior to embarking on the focused amendment process, in early 2020 the District of Squamish met with the Squamish Nation regarding the future of waste disposal in the region and to present and discuss options. These discussions resulted in an Agreement-in-Principle in 2021 that a lateral landfill expansion would be pursued. There are several project-elements between the District of Squamish and the Squamish Nation that are ongoing and are out of scope for the focused amendment process (such as the Archaeological Impact Assessment being conducted on the land).

With regards to the focused amendment process the Squamish Nation has:

- Been kept informed of the development of the Engagement Plan for public engagement,
- Received a presentation to Squamish Nation staff on July 12, 2022, by the SLRD and DoS staff,
- Received frequent updates on the progress, directly, on the Squamish Connect Platform and through the PMAC,
- Received a referral letter from the SLRD,
- Received a neighbour letter and package from the DOS,

and will have an opportunity to review (and provide feedback on) the Consultation report.

With regards to the other First Nations within the SLRD boundaries, through the PMAC, Lil'watat Nation, N'Quatqua and the Indigenous Zero Waste Technical Advisory Group (IZWTAG) were informed and consulted on the SWRMP Focused Amendment, with presentations about the project, discussions about the Focused Amendment wording, as well as given the opportunity to provide input, ask questions, and voice concerns or ask for changes (after the presentation and via email).

Additionally, the SLRD sent formal referral letters via email to Skwxwú7mesh Úxwumixw, Lower Stl'átl'imx Tribal Council, Lil'wat Nation, N'Quatqua Nation and Tsleil-Waututh Nation , with 60 days for feedback (example email and letter are in Appendix D).

## 5. PUBLIC CONSULTATION DESIGN

As mentioned above, the MOECCS' *Guide to Solid Waste Management Planning* (the Guide) was utilized during the design of the public consultation for the focused amendment, including ensuring that adequate consultation has occurred, as outlined in F.1.1 of the Guide:

- PMAC has been involved from the start of the process, beginning at the design stage of the consultation process
- The consultation process has been inclusive of a wide range of interested parties
- Interested parties (including the public) have been given ample notice of each of the consultation opportunities through a variety of notification methods
- The documentation provided sufficient information to enable the interested parties to determine how their interests may be affected
- Interested parties (including the public) have been provided with sufficient time to respond to draft documents
- The proceedings and outcomes from the consultation process have been well documented and made available for public review, so that interested parties (including the public) are able to see how the amended plan addresses their comments or issues

A Squamish Landfill Expansion Public Engagement Plan (the Engagement Plan) was developed by the DoS and the SLRD, to identify the actions, activities and timelines that needed to be implemented. The intent of the Engagement Plan was to ensure that public and stakeholders had the information they needed, and it provided an opportunity for the DoS and SLRD to listen to the community, be inclusive, transparent and accountable. It was developed to ensure the “consultation” level was achieved on the IAP2 scale for public engagement. The draft Engagement Plan was reviewed by the PMAC and a staff member of the MOECCS. Minor feedback was provided by the MOECCS, which was incorporated into the draft Engagement Plan, and no feedback was received by the PMAC. A copy of the Engagement Plan is included in Appendix A.

Part way through the consultation process, additional parties were identified that needed to be consulted, resulting in an extension of timelines to ensure that there was adequate time for feedback to be provided, and a subsequent adjustment of dates from those initially proposed in the Engagement Plan.

To aid in the delivery of the consultation, a presentation and information package were developed. The presentation can be seen through the link shown for the Open House in Section 5 and the full information package is in Appendix B. Additionally, it was anticipated that there would be significant interest in waste to energy, therefore an explicit FAQ on the topic was included on the Let's Talk Squamish page.

## 6. PARTICIPATION

The Engagement Plan was executed between May-September 2022, the following section summarizes activities that took place during public consultation, with details provided in Table 2.

Table 2 Engagement Details and Participation

Type of Engagement	Date, Location, Materials	Degree of Engagement*
<b>Pop Up Booths</b> (hosted by SLRD and DoS representatives, photos in Appendix C)	<b>Nester's Depot</b> , Whistler, 31 May, 3-5 pm <b>Public Works Open House</b> , Squamish, 1 Jun, 3-6 pm <b>Squamish Landfill</b> , Squamish, 3 Jun, 2-5 pm <b>Britannia Beach Playground</b> , Britannia Beach, 5 Jun, 10-12 pm <b>Oliver's Landing</b> , Furry Creek, 9 Jun, 6-8 pm  All pop-up booths had a poster board map of the proposed area, the information package in Appendix B and blank comment cards. Free kitchen catchers and stickers were given away to anyone interested in taking one.	3 participants 10 participants  4 participants 3 participants  8 participants
<b>Online Open House</b> (hosted by SLRD and DoS representatives)	June 8 <sup>th</sup> , 6-8 pm. The <a href="#">recording of session<sup>6</sup></a> was made available online, for viewing at a later date. A PowerPoint presentation was given.	1 participant (4 viewers after the live session)
<b>Targeted Stakeholder Engagement</b> (DoS Staff and HM Aero Consulting)	October 2021, call with Transport Canada  July – August. Consultation was held with the Airport Executive and tenants.	This resulted in two letters from the Airport Executive (Appendix I).
<b>District of Squamish Council Update</b>	A presentation was given at an open Committee of the Whole District of Squamish Council meeting on April 12. The report can be found <a href="#">here<sup>7</sup></a> , the minutes <a href="#">here<sup>8</sup></a> and the recording of the presentation and meeting <a href="#">here<sup>9</sup></a> .	Open meetings can be attended by the public or viewed online live or recorded.  A <a href="#">newspaper article<sup>10</sup></a> appeared May 4 in the Squamish Chief newspaper, regarding this presentation.



<b>Let's Talk Squamish</b>	This online engagement platform used by the District of Squamish for engaging the public has a <a href="#">specific page</a> <sup>11</sup> for the Lateral Landfill Expansion that provides information, a link to the presentation and hosted an opportunity for asking questions or making comments. This tool also highlighted dates for the engagement sessions. Questions asked were answered on the platform for others to see and a list of Frequently Asked Questions was provided (developed from the questions staff were hearing).	This page had 221 views overall, and 9 comments and questions were submitted on the platform.  Updates and reminders about consultation events and important dates were sent to 77 people (registered users who had viewed the page at that time).
<b>District of Squamish Lateral Landfill Expansion project webpage</b>	This <a href="#">webpage</a> <sup>12</sup> provides information on the project beyond the Focused Amendment and also provides opportunity for comments.	4 comments were submitted during the consultation period.
<b>Comment Cards and Information Packages</b>	Comment cards were available at the Squamish Landfill Scale Hut, the SLRD Office (Pemberton), the Municipal Hall in Squamish. The information package in Appendix B was also made available at these locations.	4 comment cards were received.
<b>Referral Letters</b> (in Appendix D)	The SLRD sent formal referral letters via email to Skwxwú7mesh Úxwumixw, Lower St'átl'imx Tribal Council, Lil'wat Nation, N'Quatqua Nation, and Tsleil-Waututh Nation.	Letters were sent in July 15, 2022 with 60 days to respond. No responses were received by the SLRD.
<b>Direct Letters to Neighbours</b> (in Appendix E)	Letters were posted by the District of Squamish to all property owners within 1.5 km of the expansion, in June. That included individuals as well as BC Hydro, School District 48, Canadian National Railway, the Province (FLNRORD) and a separate letter was also sent to the Squamish Nation including the Squamish Connect referral number. A letter was also sent to the Squamish Airport Executive.	31 letters were mailed in July (1 was returned due to the person having moved or passed away), with 60 days to respond.
<b>Direct Emails</b> (DoS staff)	As a result of the promotion and advertising, staff could receive emails directly about the amendment.	1 received

*\*Note that this is the minimum number of people who attended and asked questions. If a person did not ask questions or if the question was the same as another one asked, this was not recorded separately.*

At each of the types of engagement above, hosted by SLRD and DoS representatives, materials from the full engagement package in Appendix B were used and there was an opportunity for questions and answers.

## 7. PROMOTION AND ADVERTISING

The strategies noted on Table 3 were used to promote opportunities for learning about the focused amendment and for providing input into the process.

Table 3 Types and Dates of Promotion

Type of Promotion	Method	Dates (in 2022)
<b>Newspaper Ads</b> (see Appendix F)	<b>Pique News Magazine</b> (Whistler, Electoral Areas C & D)	May 26, Jun 2, Sept 13
	<b>The Squamish Chief</b> (Squamish, Electoral Area D)	May 26, Jun 2, Sept 13
	<b>Bridge River Lillooet News</b> (Electoral Areas A, B, C)	Jun 15, Sept 7 & 14
<b>Signage at Landfill Entrance</b> (photo in Appendix C)	A large sign was erected at the Landfill entrance directing people to the Let's Talk Squamish page.	May onwards
<b>Poster Boards at Pop Up sessions</b> (photo in Appendix C)	These poster boards helped residents to know that a pop-up session was underway and provided information.	At pop-up events
<b>Let's Talk Squamish Webpage</b>	This online <a href="#">engagement platform</a> <sup>13</sup> also promoted events.	May 18, 2022 (and onwards)
<b>District of Squamish Lateral Landfill Expansion webpage</b> (the DoS' main website <a href="#">squamish.ca</a> , which is different than the Let's Talk Squamish Platform)	This <a href="#">webpage</a> <sup>14</sup> provided information and directed interested parties to the Let's Talk Squamish page.	April onwards
<b>SLRD Webpage</b>	<a href="#">The project specific webpage</a> <sup>15</sup> highlighted information and opportunities to engage and referred to the DoS Landfill Lateral Expansion project page and the engagement project platform.	May 30 onwards

<b>Social Media Posts</b>	The Resort Municipality of Whistler, District of Squamish and the SLRD posted content on the engagement opportunities. The RMOW post reached 26 people and had one share. District of Squamish social media posts reached 1008 people and had 4 shares. The SLRD posts reached 1525 people and were shared three times.	May - September
<b>Social Media Sponsored Content</b>	The District of Squamish ran a paid advertising campaign on social media to promote the information night on June 8. The ad directed people to the Let's Talk Squamish project page. The ad received 5,352 views and had 74 clicks.	June 3-8, 2022
<b>District of Squamish weekly E-newsletter</b>	A weekly e-newsletter to residents, which promoted the Let's Talk Squamish and pop-up engagements. The District has an email subscriber list of more than 2000 people.	<a href="#">May 27, 2022</a> , <a href="#">June 3, 2022</a> , <a href="#">June 10, 2022</a> , <a href="#">June 17, 2022</a> , <a href="#">June 24, 2022</a> , <a href="#">June 30, 2022</a> , <a href="#">July 8, 2022</a> , <a href="#">July 15, 2022</a> <sup>16</sup>
<b>Emails through Let's Talk Squamish</b>	Notifications about the online engagement and June 8th session were emailed to all registered users (with Let's Talk Squamish) who had viewed the project page.	
<b>Communications to District of Squamish Staff</b>	Through Chief Administrative Officer updates via emails to staff and the staff portal, for the online and pop-up engagements.	June onwards
<b>Communications to SLRD Staff</b>	SLRD Staff were informed and invited to participate via email from staff to staff.	May

## 8. FEEDBACK DURING PUBLIC CONSULTATION PROCESS

Feedback on the Lateral Landfill Expansion and the Alternative Option to Export Waste was solicited from all the sessions and tactics noted above in Table 2.

### Direct Feedback

Table 4 below shows the key themes of questions and comments that came from the pop-up sessions, the virtual open house, comment cards, comments left on Squamish.ca, questions posted on Let's Talk Squamish and emails to staff. Details can be seen in Appendix I and on the Let's Talk Squamish [webpage](#).<sup>17</sup>

Table 4 Key Themes and Details\* of Feedback

Key theme	Comment or question (frequency of mentions)
<b>Process</b>	What is the next step? (1) What triggered the MOECCS to be involved ? (1) Is the MOECCS supportive? (1) What happens when the landfill closes? (3) What happens to my garbage? (1) Additional suggestions for engaging others (1)
<b>Options</b>	Expansion is needed (1) Expansion plans look great (1) No perfect solution but this makes sense (1) Community should look after its own waste (1) What other options exist? (3) Is waste to energy an option? Why not (6) Waste-to-Energy - technology is improving (1) Prefer an incinerator to landfill expansion (2) Consider neighbourhood district energy system (1) What about waste export? (1) Where would exported waste go? (1) Waste export is problematic - reliant on trucking long distances (1) What will be the fate of specific categories of waste? (1) What happens if there is no extension?(1) What happens if the Province says no? (1) Prefer additional depots to increase recycling (1)
<b>Location</b>	Where is the landfill? (1) Why in Squamish and not a desert area? (1) Who owns the land? (4) What is the volume of the expansion? (1) Will waste come from Whistler? (1)
<b>Environmental Impact</b>	Is there an environmental impact assessment? (1) How do you prevent environmental impact? (1) How will bear management be handled? (1) Need to protect the salmon due to proximity to the river (1)

	What is the rock like under the landfill? (1) How deep will the digging be/what will be the elevation? (2) Why is a leachate pre-treatment system needed? (2) Where does the leachate go? (1) What is leachate? (1) Will there be gas collection? (1) What is landfill gas? (1) Interest in what is done with landfill gas (5) How does it save GHGs to export waste? (1)
<b>Flooding/Debris Flow</b>	What if the river floods -will the water be deflected north? (1) Is it in the floodplain zone? (1) What is the impact of the landfill expansion on potential debris torrents?
<b>Lifespan</b>	When will the current landfill close? (3) How long has it been open? (3) What is the volume of the expansion? (1) What is the lifespan of the expansion? (3)
<b>Waste reduction &amp; improving the transfer station</b>	How does this work with supporting the circular economy? (1) Need to focus on producing less waste (1) How is recycling and composting fitting in with the expansion? (1) How will this be done? (1) Please expand the entrance so truck-trailer can make U-turns /easier traffic flow if have multiple streams (3) Can there be a drop off for institutional/commercial/Industrial waste to keep the trucks and trailers out of the landfill? (1) Have the recycling materials in the free area before going over the scale (1) Would appreciate longer hours (2) Where is the wood diversion business going? (1)
<b>Costs</b>	How much will it cost? (1)

*\*Note that some questions may have been asked more times than recorded if multiple questions were asked in one conversation but the numbers are reflective of the relative proportion of the times an issue was raised.*

## Squamish Aerodrome

The Squamish Aerodrome is a registered aerodrome, not a certified airport, and is therefore controlled by a local authority, which in this circumstance is the Squamish Airport Executive (or also known as the District of Squamish) and not NAV CANADA.

As per Land Use in the Vicinity of Aerodromes, TP1247E (9<sup>th</sup> Edition), Transport Canada defines Primary Hazard Zones as being the airspace in which aircraft are at or below altitudes of 1,500 ft. Above Ground Level. These are stated to be the altitudes most populated by birds where collisions have the potential to result in the greatest damage. Based on the land use guidance provided in TP1247, Transport Canada does not identify putrescible waste landfills, and that land use acceptability is site sensitive and is determined through detailed assessments of each aerodrome



and its surroundings, and that risks associated with many land uses can be reduced through appropriate mitigation and monitoring.

The consultant HM Aero Aviation Consulting was contracted to engage with the Airport Executive and the aviation tenants, which resulted in two letters (Appendix I). Feedback from the Executive and their aviation tenants noted that the risk of birds strikes due to proximity of the landfill was no higher than when operating aircraft near the confluence of multiple rivers and no bird strikes have been recorded from Jan 1, 2012 until July 7, 2022 when the data request was made. Despite some near misses, the hazards to date had been manageable and without negative consequences. They recommended the use of bird deterrence measures for the future planning and operation of the landfill and reserved the right to request mitigation measures in the future if bird hazards resulted from expanded landfill operations. Additionally, as a result of these discussions the District of Squamish submitted a request for a Canada Flight Supplement update to NAV CANADA. The update would identify the Squamish Landfill in the VFR Terminal Procedures Chart and that the following cautionary note be added: Wildlife may be on or in vic of rwy. Landfill 0.5NM E of Thld 15, possible bird activity in vic of A/D.

It should be noted that while the MOECCS Landfill Criteria for Municipal Solid Waste (2016) indicates engagement with NAV CANADA, it was deemed by the MOECCS, that because it is an aerodrome and not a certified airport in Squamish, the DoS and SLRD needed to engage with the Airport Executive and tenants instead of NAV CANADA.

### Other Local Governments

In response to the June 6<sup>th</sup> email, the Resort Municipality of Whistler representative sent an email in support of the focused amendments (Appendix I).

### Out of Scope comments

Several responders provided feedback that was broader than the focused amendment. This feedback, while not directly pertinent to the amendment, will be considered for the next full SWRMP update and the update of the DoS Zero Waste Strategy. Details are in Appendix I.

## 9. PREFERRED STRATEGIES

In general, even though there were a variety of opportunities offered and numerous methods used to inform the public about the focused amendment to the SWRMP, there was limited engagement.

The options considered for the focused amendment were to have both a lateral expansion of the landfill and an option to export waste. There was general support for the proposed amendment with several questions about the other options, with a focus on waste to energy in particular. Two comments were received against the lateral landfill expansion that suggested the DoS look into waste to energy instead and one comment not in favour of waste export, preferring waste reduction. Answers to the waste to energy questions addressed why that was not the preferred option at this time due to timing, council direction and cost considerations (details in Appendix I). These questions can be considered at the time of the full SWRMP update (details were provided on how to be a part of the update). The DoS is also pursuing waste reduction but will still require disposal capacity.

If the current Landfill reaches capacity before the expansion is ready to accept waste, or an unforeseen obstacle prohibits the landfill expansion, the District will move forward with exporting waste out of the region. If it is the former, this would be a temporary solution until the expansion is complete.

Outside of the options available, the following is a table that outlines the summary of responses and responding actions to the feedback and questions received to the engagement. The responses noted in Table 5 indicate that the District had planned well for addressing concerns that may be raised (referenced in the Engagement Plan and the Full Landfill Package in Appendices A & B).

Table 5 Responses to Feedback

Key theme	Summary of response
<b>Process</b>	<p>These questions were answered.</p> <p>Continual updates to the project are provided, complemented by check-ins with Provincial agencies (MOECCS &amp; FLNRORD). The project management will remain responsive and flexible to any unanticipated obstacles.</p>
<b>Location</b>	<p>These questions were addressed.</p> <p>Though not raised as issues during the public engagement, the District will conduct a traffic study and an archaeological impact assessment.</p>
<b>Environmental Impact</b>	<p>Comments and questions reflected the concern for the environment that respondents had including for management of wildlife, salmon, aquatic life, leachate, gas collection and overall environmental impact. The District of Squamish has committed:</p> <ul style="list-style-type: none"> <li>• To working with environmental group(s), DOS staff, and relevant provincial agencies to ensure proper procedures are followed and measures are taken.</li> <li>• That all land clearing will be done in compliance with requirements from FLNRORD &amp; Skwxwú7mesh Úxwumixw</li> <li>• To ensuring site prep works and Landfill operations are in compliance with all regulatory requirements (MOECCS, FLNRORD, DOS Bylaws)</li> <li>• To reducing and mitigating the impact of leachate on the District's sewer system and water courses</li> <li>• To work with an external Qualified Environmental Professional (QEP) and an internal environmental group throughout all phases of design and construction to ensure protection of the environment including wildlife, salmon and aquatic life.</li> <li>• To continued work on communicating the benefits of diversion (environmental and financial) and a continued focus on supporting behaviour change to reduce waste production</li> <li>• To continued efforts to increase diversion opportunities for the community</li> </ul>

	<ul style="list-style-type: none"> <li>• To conduct an assessment of space available and a development of how to open up the space to tenants will be developed at a later date in the project.</li> <li>• To build on recent improvements on the landfill gas collection system and flare, leachate collection and increased waste diversion</li> </ul>
<b>Flooding</b>	A debris-flow risk assessment will be conducted to evaluate the risk and any recommended measures will be incorporated into the design and build of the expansion.
<b>Lifespan</b>	These questions were answered.
<b>Waste reduction &amp; Improving the transfer station</b>	Waste reduction and increasing diversion options will be part of the process in developing and implementing Squamish's updated Zero Waste Strategy. That strategy as well as the design of the Transfer Station or Landfill will address the issues raised. The expansion will include an upgrade to the transfer station to provide increased waste diversion opportunities from what is currently offered.
<b>Costs</b>	The lateral expansion is projected to cost around \$49,900,000 over the entire life of the project. This includes costs for design, permitting, capital and future closures. These costs will be phased over the life of the project as the Landfill gradually expands, over 25+ years. Residents' general property taxes will not be impacted by the lateral expansion. The costs will be covered by users of the Landfill (through tipping fees) as well as those who pay the solid waste utility. Staff will work with the District's Finance department to address the long-term financing of the project.
<b>Bird attractants and risk to planes</b>	The District committed to ensure increased bird mitigation and deterrence strategies are included in the design of the expansion.

## 10. PLAN IMPLEMENTATION

The final Consultation Report will be shared with the public and engaged stakeholders through the social media (SLRD & DOS), the Let's Talk Platform (to registered users who viewed the project page), and will be posted on the SLRD and DOS websites for those who would like to view them at their convenience.

The Consultation Report has been presented to the PMAC for their review, and with their recommended edits, it will be presented to the SLRD Board of Directors, who will then vote on incorporating the focused amendment language into the SWRMP. Once that is complete, the report and amended SWRMP will be submitted to the MOECCS for approval by the minister.

After the focused amendment is approved by the MOECCS, the PMAC will monitor the implementation of the amendment, and if needed make recommendations to increase its effectiveness.

## APPENDIX A: PUBLIC ENGAGEMENT PLAN

### Squamish Landfill Expansion: Public Engagement Plan

#### Contents

<b>Project Overview</b> .....	1
<b>Overarching Goal:</b> .....	2
<b>Engagement Overview:</b> .....	2
<b>Engagement Purpose Statement:</b> .....	2
<b>Desired Outcomes of the Engagement:</b> .....	2
<b>Engagement Content:</b> .....	2
<b>Key Messages:</b> .....	2
<b>Anticipated Questions:</b> .....	3
<b>What Has Already Been Decided and How Did We Get Here?</b> .....	3
<b>SWRMP Amended Wording for Feedback:</b> .....	3
<b>Stakeholders</b> .....	5
<b>Engagement With Governmental Stakeholders</b> .....	5
<b>Potential Impacts, Stakeholders &amp; Steps:</b> .....	6
<b>Engagement Process Timeline</b> .....	8
<b>Engagement Materials Needed</b> .....	11

#### Project Overview

The District of Squamish Landfill is forecasted to reach capacity in late 2028/early 2029. Lifespan of the site depends on community material compaction, disposal rates and diversion of recyclable material. To ensure continued management of residual waste in Squamish, the District of Squamish (the District) assessed three options, lateral expansion of the current landfill, waste-export out of the region, and a waste-to-energy facility.

After careful consideration, the District is pursuing a lateral expansion of the Landfill, to the east of the current Landfill footprint. The project will incorporate an upgrade to the current transfer station and the installation of a leachate treatment system.

To move forward with this expansion, the District must amend the wording in the Squamish Lillooet Regional District's (SLRD) Solid Waste & Resource Management Plan (SWRMP) to include explicit approval of the lateral expansion of the Squamish Landfill.

While not anticipated, it is possible that a lateral landfill expansion will not be feasible due to unidentified constraints. Given the short timeline for when the current landfill is forecasted to reach capacity, waste-export out of the region must also be explored as a backup option as there will not be time to start the process again.



This engagement process will provide contextual information about the project and ask the public to provide input, feedback and ask questions about District of Squamish's proposal to expand the Landfill laterally, or to export waste as the secondary plan, and amend the SLRD SWRMP accordingly.

## Overarching Goal:

### Engagement Overview:

#### Engagement Purpose Statement:

To **consult** residents in Squamish and throughout the SLRD on a proposed focused amendment to the SWRMP that will allow for a lateral expansion of the Squamish landfill with waste-export as a secondary option for residual waste management.

As per the IAP2 Spectrum of Public Participation:

**Consult:** We will keep you informed, listen to and acknowledge concerns and aspirations, and provide feedback on how public input influenced the decision. We will seek your feedback on drafts and proposals.

#### Desired Outcomes of the Engagement:

- Increase awareness on solid waste disposal and diversion in the District of Squamish, including the limited remaining capacity at the Squamish Landfill
- Raise awareness on the proposed SWRMP focused amendment and update processes.
- Seek feedback from the public and interested stakeholders on the proposed focused amendment.
- Provide notice of all engagement opportunity through a variety of notification methods.
- To ensure requirements under the *Environmental Management Act* are met.
- To ensure the amended plan aligns with information gathered during public consultation.
- The engagement process is inclusive and considers all feedback received.
- Ensure that the focused amendment is well-supported regionally.

### Engagement Content:

To support the focused amendment to the SLRD SWRMP, the District must demonstrate to the Ministry of Environment and Climate Change Strategy that the SLRD member municipalities and Electoral Areas and impacted stakeholders are informed about the focused amendment and have had an opportunity to provide comments and to ask questions. That the outcomes from the engagement process are made available for interested parties can see how the focused amendment addresses their comments or issues.

#### Key Messages:

- Why the District is moving forward with a lateral expansion
- The expansion will occur on the land directly East to the current Landfill, and will build upon the current Landfill
- The District is leading this focused amendment closely with the support of the SLRD
- Messaging about Squamish's commitment to waste reduction and diversion

- Intention is that this is not “just a landfill” and that we are exploring how we can incorporate circular economy or increased diversion (through recycling options or technology)
- The Squamish landfill services all of us, residents who are on curbside collection, businesses (large and small), residents in multi-family complexes.
- The intent is to do this fiscally-responsible, and ideally defer costs of a longer time period so there isn’t a large impact to tipping fees at the site.
- The operations and site development will meet government regulations for both landfill development, operations and environmental management/monitoring.
- Extending the current Landfill lifespan by focusing on the diversion of recyclables and optimizing operational efficiency is a high priority for the District.
- Waste to Energy (WTE) has been assessed as not a viable option as a current solution due to the time, regulatory and technology restrictions.
- The District will continue to assess the viability of WTE on an ongoing basis for the medium to long term.

#### Anticipated Questions:

- Why is a landfill expansion is needed?
- What options were considered before deciding to expand the landfill?
- Why the lateral expansion of the landfill is the preferred option?
- Why waste-export out of the region is being considered as the alternative plan?

#### What Has Already Been Decided and How Did We Get Here?

Site surveys and fill models available in early 2019 predicted that the vertical expansion would reach capacity in 2027. Since then several operational changes have been put in place, including more efficient compaction equipment, operator training, increased diversion opportunities and incentives, and infrastructure improvements. The Landfill is now on-track to reach capacity in 2028/2029. As the Landfill nears capacity, the District identified options for waste disposal once the Landfill is full, the options included:

1. A lateral expansion of the current Landfill
2. Construction of a transfer station and export of waste out of region
3. Waste-to-Energy (WTE) with a small lateral expansion of the Landfill

District of Squamish staff presented to their Council and Skwxwú7mesh Úxwumixw (Squamish Nation) an assessment of the three options and it was decided by both parties to pursue lateral expansion of the existing Landfill to address waste management needs in the short to medium term, and for waste export to be considered as the alternative (or secondary) plan.

#### SWRMP Amended Wording for Feedback:

Following (in blue) is the proposed focused amendment to the wording in the SLRD’s SWRMP, to be included in the engagement:

SWRMP Reference	2016 SWRMP Wording	2022 Focused Amendment Change
-----------------	--------------------	-------------------------------

<p><b>Section 15.2:</b> <b>Disposal</b> p.35</p>	<p>In order to ensure sustained landfill capacity and continued regulatory compliance at all residual waste management facilities, the following activities are planned:</p> <ol style="list-style-type: none"> <li>1. Expand the Squamish Landfill to increase the capacity of the landfill. Within the current disposal management operations, the DOS landfill will reach capacity in 2018. An expansion can include a number of steps: <ol style="list-style-type: none"> <li>a) Expand the landfill laterally to the east. This expansion would provide Squamish with up to 46 years of additional landfill life. However, it may be several years before it is determined whether the lateral expansion is a viable option. For example Squamish needs to consult with Squamish First Nation. This option is also dependent on other expansion options, as described below.</li> <li>b) Expand the landfill vertically on their existing site by constructing retaining walls at the base of the existing landfill that allow the landfill to be built higher (i.e. a vertical expansion). This option has received approval-in-principle by Squamish Council. This could gain 13-14 years of additional capacity and would only accommodate the needs of current users (i.e. primarily Squamish). Whistler would continue to export their solid waste out of the region.</li> <li>c) If the Squamish Landfill receives approval to expand laterally, Squamish, with support from Whistler, Pemberton, and the SLRD should review the opportunity to designate the Squamish Landfill as a regional landfill. Whistler has indicated their intent to send their waste to the Squamish Landfill on the condition that the site meets BC Landfill Criteria guidelines and that the cost of using the disposal facility is cost competitive with out-of-region options.</li> </ol> </li> </ol>	<p><b><u>REVISION (proposed):</u></b></p> <ol style="list-style-type: none"> <li>a) The District of Squamish has evaluated short to medium term disposal options, and will move forward with expanding the Squamish Landfill laterally, to the East.</li> <li>b) No change</li> <li>c) No change</li> </ol> <p><b><u>NEW CONTENT (proposed):</u></b></p> <ol style="list-style-type: none"> <li>d) If the District is unable to move forward with the lateral landfill expansion, they will expand the current Transfer Station, or site a new one, to facilitate the export of waste out of the region.</li> </ol>
--	--	---

## Stakeholders

The focused amendment will include the engagement of all member municipalities and Electoral Areas within the SLRD, with a focus on the highly impacted residents and areas. The intention is to reach out to everyone who may have an interest in, or be affected by, the outcomes of the focused amendment to the SWRMP.

Communities and stakeholders that have been identified include, but are not limited to:

- Residents of the SLRD
- First Nation Communities: Skwxwú7mesh Úxwumixw, St'át'imc and Lil'wat, Stó:lō, Tsleil-Waututh, Nlaka'pamux, Tsilhqot'in, and Secwepemc Nations
- Member Municipal agencies: District of Squamish Council, Resort Municipality of Whistler, Village of Pemberton
- SLRD BOD and staff
- SLRD Solid Waste & Resource Management Plan Monitoring Advisory Committee (PMAC)
- Business community of the District of Squamish
- Neighbouring Landowners to the Squamish Landfill
- Nch'kay Development Corporation (Skwxwú7mesh Úxwumixw Economic Development Arm)
- Provincial agencies: Ministry of Forests, Lands, Natural Resource Operations and Rural Development (FLNRORD), Ministry of Environment and Climate Change Strategy (MOECCS)
- The Squamish Aerodrome Executive
- BC Hydro

## Engagement With Governmental Stakeholders

The District will engage directly with Skwxwú7mesh Úxwumixw and other municipal agencies, including the Resort Municipality of Whistler and the Village of Pemberton.

The District has identified Skwxwú7mesh Úxwumixw as a key partner in the process of the landfill's lateral expansion, and has worked to incorporate and collaborate with Skwxwú7mesh Úxwumixw from the inception of the project. District staff met with Skwxwú7mesh Úxwumixw staff several times, starting in early 2020, regarding the future of waste disposal in the region, and these meetings included extensive discussions and information on the three options. After these meetings, Skwxwú7mesh Úxwumixw staff provided their conditional support for the lateral expansion of the Squamish Landfill.

District Staff continue to engage and communicate with Skwxwú7mesh Úxwumixw staff, providing quarterly updates to the staff, or reaching out directly through the email and the Squamish Connect platform if something time-sensitive comes up.

## Potential Impacts, Stakeholders &amp; Steps:

Potential Impacts	Impacted Stakeholders	Next Step
Increased traffic on Squamish Valley Road.	<ul style="list-style-type: none"> <li>Residents who use Squamish Valley Road</li> <li>Landfill Site Users</li> <li>Sḵw̱xwú7mesh Úxwumixw</li> <li>Neighbouring landowners</li> <li>Neighbouring lease-owners</li> </ul>	<ul style="list-style-type: none"> <li>Conduct traffic study to assess impacts.</li> </ul>
Increased bird attractants, and therefore risk to planes.	<ul style="list-style-type: none"> <li>Squamish Airport tenants &amp; Executive (DOS)</li> </ul>	<ul style="list-style-type: none"> <li>Work with Aerodrome tenants to understand risk</li> <li>Ensure increased bird mitigation strategies are included in the Design</li> <li>Work with the Executive on the development of the Airport Strategy (2022)</li> </ul>
Wildlife impacts	<ul style="list-style-type: none"> <li>Wildlife</li> <li>Sḵw̱xwú7mesh Úxwumixw</li> <li>Neighbouring landowners</li> </ul>	<ul style="list-style-type: none"> <li>Work with environmental group, DOS staff, relevant provincial agencies to ensure proper procedures are followed and measures are taken.</li> </ul>
Increased recycling and diversion opportunities offered in the Transfer Station.	<ul style="list-style-type: none"> <li>Landfill Site Users</li> <li>Business Community</li> </ul>	<ul style="list-style-type: none"> <li>Gather feedback during the Engagement process and the Zero Waste Strategy Update Engagement.</li> </ul>
Opportunity to reduce cost, GHGs and risks associated with trucking their garbage out of region.	<ul style="list-style-type: none"> <li>RMOW and Village of Pemberton</li> <li>Residents of RMOW</li> <li>Residents of First Nations, SLRD &amp; Village of Pemberton</li> </ul>	<ul style="list-style-type: none"> <li>Engage with the Government Agencies on the opportunity to accept their material.</li> </ul>
Impacts to adjacent property value.	<ul style="list-style-type: none"> <li>Neighbouring landowners</li> </ul>	<ul style="list-style-type: none"> <li>Assess the potential impacts.</li> </ul>
Loss of culturally significant lands.	<ul style="list-style-type: none"> <li>Sḵw̱xwú7mesh Úxwumixw</li> <li>FLNRORD</li> </ul>	<ul style="list-style-type: none"> <li>Archaeological impact assessment will be conducted on the land.</li> <li>Sḵw̱xwú7mesh Úxwumixw is engaged throughout the entire project.</li> </ul>
Impacted operations of neighbouring properties	<ul style="list-style-type: none"> <li>Neighbouring landowners</li> <li>GFL (operator of Cheekye Recycle Yard)</li> <li>Woodlot license holders</li> <li>BC Hydro</li> </ul>	<ul style="list-style-type: none"> <li>Engage to understand concerns.</li> <li>Conduct traffic study to assess impacts.</li> </ul>



Trees removed to clear site for expansion.	<ul style="list-style-type: none"> <li>Environmental and conservation groups</li> <li>Sḵwx̱wú7mesh Úxwumixw</li> <li>FLNRORD</li> </ul>	<ul style="list-style-type: none"> <li>All land clearing will be done in compliance with requirements from FLNRORD &amp; Sḵwx̱wú7mesh Úxwumixw</li> </ul>
Environmental protection concerns with a larger landfill.	<ul style="list-style-type: none"> <li>Environmental groups</li> <li>Sḵwx̱wú7mesh Úxwumixw</li> <li>MOECCS</li> <li>District of Squamish</li> </ul>	<ul style="list-style-type: none"> <li>Ensure site prep works and Landfill operations are in compliance with all regulatory requirements (MOECCS, FLNRORD, DOS Bylaws)</li> </ul>
Perception that increased landfill capacity means less need for waste diversion	<ul style="list-style-type: none"> <li>Environmental groups</li> <li>MOECCS</li> <li>District of Squamish</li> <li>RMOW</li> <li>SLRD</li> </ul>	<ul style="list-style-type: none"> <li>Continued work on communicating the benefits of diversion (environmental and financial)</li> <li>Continued efforts to increase diversion opportunities for the community</li> <li>Continued focus on supporting behaviour change to reduce waste production.</li> </ul>
Lifespan of the current site is extended	<ul style="list-style-type: none"> <li>All Users of the Landfill</li> </ul>	
Temporary space for diversion/circular economy will be available	<ul style="list-style-type: none"> <li>Businesses and residents in the circular economy space</li> </ul>	<ul style="list-style-type: none"> <li>Assessment of space available and a development of how to open up the space to tenants will be developed at a later date in the project.</li> </ul>
Increase in tipping fees to cover the cost of the expansion.	<ul style="list-style-type: none"> <li>All Users of the Landfill</li> <li>ICI &amp; MFH waste haulers/customers</li> </ul>	<ul style="list-style-type: none"> <li>Staff will work with the District Finance to team to address the long-term financing of the project</li> </ul>
Inability to complete the lateral expansion before the current Landfill reaches capacity.	<ul style="list-style-type: none"> <li>Current users of the Squamish Landfill</li> </ul>	<ul style="list-style-type: none"> <li>Continual updates to the project are provided, complemented by check-ins with Provincial agencies (MOECCS &amp; FLNRORD)</li> <li>The project management will remain responsive and flexible to any unanticipated obstacles.</li> </ul>

## Engagement Process Timeline

Decision Step	What Will Happen	Timing
Announce the project to residents in Squamish and throughout the SLRD	<ul style="list-style-type: none"> <li>Let's Talk Squamish (LTS) page goes live</li> <li>Press release</li> <li>Project page on Squamish.ca updated with a link to the LTS page</li> <li>Project page on SLRD's website with a link to Squamish.ca &amp; LTS page</li> <li>Signage put up at landfill</li> <li>Social Media post(s)</li> <li>Project mentioned in District E-News weekly email</li> <li>Ads placed in Squamish Chief, Whistler Pique, Lillooet News and Gold Bridge Newspaper (for a minimum of 2 consecutive weeks)</li> <li>Radio ads on Mountain FM? Good reach for whole region</li> <li>Letters sent to specific stakeholders &amp; neighbouring properties</li> <li>Information on the SLRD website and social media</li> <li>Develop an email-list to provide regular updates and notification to.</li> </ul>	First week of May 2022
Invite Comments, Questions, and Feedback: - Online Via LTS - Physical forms	<ul style="list-style-type: none"> <li>LTS will be the project hub with all information</li> <li>Feedback and comments collected through: <ul style="list-style-type: none"> <li>Question and Answer tool</li> <li>Comment Form</li> <li>Ideas Tool</li> </ul> </li> <li>For those who are not interested in online participation, forms will be available at the front desk of the District Municipal Hall, SLRD office and the Squamish Landfill Scale Hut.</li> </ul>	Engagement Launch – End of Engagement Period
Continued Promotion of Engagement Opportunities	<ul style="list-style-type: none"> <li>Sponsored content on social media that targets SLRD communities specifically</li> <li>Ads in local papers</li> <li>Social media posts</li> <li>Radio interview? Or Radio ad</li> <li>Email listserv regular updates on engagement sessions/opportunities</li> </ul>	Ongoing throughout entire engagement period
Continued Update of FAQ on website	<ul style="list-style-type: none"> <li>A FAQ will be live on LTS/DOS website, and will be continually updated with questions brought up during the engagement.</li> </ul>	Ongoing throughout entire engagement period
In-Person Info Event in Squamish	<ul style="list-style-type: none"> <li>Open House in Squamish at a busy community hub: recreation centre, library or municipal hall</li> <li>Will include:</li> </ul>	Third Week of May

	<ul style="list-style-type: none"> <li>• A table with printed info materials</li> <li>• Poster boards of information</li> <li>• iPads and written comment cards on hand to collect comments</li> <li>• One DOS staff and one SLRD staff attend to answer questions</li> <li>• Promote the online info session at these sessions</li> </ul>	
In-Person Information Sessions for SLRD Communities	<ul style="list-style-type: none"> <li>• Pop up info sessions will be hosted: Whistler and Furry Creek/Britannia Beach.</li> <li>• One session in each community at a busy community hub: recreation centre or grocery store (anticipated that the local government will suggest good times to host an event in a high-traffic area)</li> <li>• Anticipate less interest outside of Squamish. These will be smaller in scale: A table, some printed info materials. iPads and written comment cards on hand to collect comments</li> <li>• One DOS staff and one SLRD staff attend to answer questions, perhaps a representative from that local government as well (if applicable)</li> <li>• Promote the online info session at these sessions</li> <li>• District will work with these municipalities to promote these events through their channels in advance.</li> <li>• Potential to place ads in local media the week ahead time.</li> </ul>	Last 2 Weeks of May
Online Info Session	<ul style="list-style-type: none"> <li>• An opportunity for people who can't attend the in-person info session to get information. Aimed mostly at Squamish residents, as that is likely where the most interest will be, but will be open to everyone as a chance for people from across the region to listen and participate.</li> <li>• Promoted to entire SLRD Region</li> </ul>	First Week of June
Last Week of Engagement Push	<ul style="list-style-type: none"> <li>• Social posts reminding that the period for comments will close soon</li> <li>• Email to LTS project followers reminding that comment period will close soon.</li> </ul>	
Engagement Period Closes	<ul style="list-style-type: none"> <li>• All feedback tools closed.</li> <li>• Messages sent out via LTS to all participants thanking them for their comments and providing a timeline for when they can expect a summary report to be published.</li> <li>• Evaluation questions/one-minute survey could be included to measure success of process</li> </ul>	Last Week of June
Engagement Evaluation & Report	<ul style="list-style-type: none"> <li>• Evaluation and summarization of engagement results</li> <li>• Engagement received that is applicable to the SWRMP Focused Amendment will be considered and incorporated, where possible.</li> <li>• Report (required by the MOECCS) is drafted by a Consultant that summarizes the engagement, which meets the Public Consultation reporting requirements of the BC SWMP Guidance documents.</li> </ul>	July and August 2022

Sharing the Results with Public	<ul style="list-style-type: none"> <li>• Communicate what we heard during the engagement with the public</li> <li>• Updates posted to the LTS page</li> <li>• Engagement summary report shared on LTS</li> <li>• Email sent to all project participants via LTS to let them know that the results are available and the next steps</li> </ul>	September 2022
Sharing Final Engagement Results and Report	<ul style="list-style-type: none"> <li>• Presentation to PMAC</li> <li>• PMAC recommends it's approval by the SLRD BOD,</li> <li>• Presentation to the DOS Council, Skwxwú7mesh Úxwumixw and other impacted stakeholders</li> <li>• Website and tools all updated to reflect final presentations and integration points.</li> </ul>	December 2022
Submission of Focused Amendment to MOECCS	<ul style="list-style-type: none"> <li>• Upon final approvals, the final report will be submitted to the MOECCS for their review and approval</li> </ul>	

**Not part of the Focused Amendment:** The Integration of Engagement/Feedback received that is not related to the Focused Amendment

- All feedback and comments received that are not related to the focused amendment will be considered in either the drafting of the Landfill's Concept Design or the Update to Squamish's Zero Waste Strategy (where appropriate).

## Engagement Materials Needed

- The exact focused amendment language we will be including the SWRMP
- Let's Talk Squamish page content
  - One-pager about what each of the three options actually are
  - One-pager about by WTE is off the table
  - One-pager about why lateral expansion is preferred option
- Squamish.ca project page content
- Content for news release
- Social media content and graphics (timed to release at same time as news release)
- Content for a fact sheet or FAQ document
- Signage to display at landfill
- Graphics to showcase the proposed expansion area and any design details
- Printed collateral to have at in-person pop-ups (post card with link to LTS?)
- Info boards for public information event of some sort in Squamish
- Feedback forms to be at Municipal Hall/Landfill Scale Hut
- LFG explainer document – available on climate action website.

## APPENDIX B: FULL LANDFILL INFORMATION PACKAGE

### THE SQUAMISH LANDFILL IS ON TRACK TO REACH CAPACITY IN LATE 2028 TO EARLY 2029



#### **The District of Squamish is working to expand the Landfill laterally to the east of the current Landfill.**

The Squamish Landfill services residents and businesses of the District of Squamish, Skwxwú7mesh Úxwumixw (Squamish Nation), Britannia Beach, Furry Creek, as well as the Squamish and Paradise Valleys. The lateral landfill expansion project aims to:

- Ensure local waste disposal for the next 25+ years
- Be innovative and flexible to be more than "just a landfill" in the future
- Integrate smoothly with existing infrastructure to provide environmentally sound operations
- Upgrade the transfer station to provide increased waste diversion opportunities
- Reduce the impact of leachate on the District's sewer system
- Utilize the unused future landfill area to temporarily support circular economy and reuse initiatives

#### **WHAT IS HAPPENING:**

Solid waste in Squamish is managed according to the Squamish Lillooet Regional District's (SLRD) Solid Waste and Resource Management Plan (SWRMP). The SWRMP provides a long-term vision for how the region will handle solid waste, as well as waste reduction, diversion, and disposal activities. The Ministry of Environment and Climate Change Strategy (MOECCS) oversees the SWRMP.

The District of Squamish is working with the SLRD to add two focused amendments to the existing SWRMP:

- The first amendment will allow for the lateral expansion of the Squamish landfill.
- The second amendment will allow for waste to be exported out of region. This is not the preferred option. While not anticipated, if the lateral expansion cannot move forward for any reason, or a temporary waste solution is needed, the District will export waste out of the region.

Both amendments will be sent to the MOECCS for approval.

The land identified for the lateral expansion, is unceded land claimed by the Crown, which lies within the traditional territory of the Skwxwú7mesh Úxwumixw. The District is working closely with Skwxwú7mesh Úxwumixw as part of this process.

**Learn more, ask questions, and leave comments about the project and the two amendments to the SWRMP.  
Please submit your comments by July 15, 2022.**

**[LetsTalkSquamish.ca](http://LetsTalkSquamish.ca)**

  
**SQUAMISH**  
HARDWIRED for ADVENTURE  
[www.LetsTalkSquamish.ca](http://www.LetsTalkSquamish.ca)

## LANDFILL LATERAL EXPANSION FREQUENTLY ASKED QUESTIONS

### Didn't the Squamish Landfill expand recently?

Yes. In 2017, the District invested \$6.5 million, into a vertical expansion of the Landfill. The vertical expansion built a 10m wall, allowing the Landfill to grow taller instead of expanding into more land. This increased the lifespan of the Landfill from 201 until 2028/2029.

### Why is the Landfill expanding when the District has a zero-waste action plan and circular economy road map?

The District continues to work towards our zero-waste goals. The current transfer station and recyclable depot can process many materials, including: wood, yard waste, mattresses, glass, metal, small appliances, electronics, drywall, books, textiles, organics, cardboard, Styrofoam, invasive species, paper and hard and soft plastics. The expansion will include an upgrade to the transfer station to provide increased waste diversion opportunities from what is currently offered.

### How much will the lateral expansion cost? How will the District pay for it?

- The lateral expansion is projected to cost \$49,900,000 over the entire life of the project. This includes costs for design, permitting, capital and future closures. These costs will be phased over the life of the project as the Landfill gradually expands, over 25+ years.
- Residents' general property taxes will not be impacted by the lateral expansion. The costs will be covered by users of the Landfill (through tipping fees) as well as those who pay the solid waste utility. Any current increases in the solid waste utility rates and tipping fees reflect the costs of operating and financing the current landfill, not the lateral expansion.

### What environmental protection measures will be in place for the lateral expansion?

- Squamish Landfill was just recognized and awarded the Most Improved Landfill in BC for 2022 due to recent environmental improvements such as the installation of a landfill gas collection system and flare, improved leachate collection and increased waste diversion.
- The lateral expansion of the Landfill will build on these improvements, including: enhanced leachate treatment, expansion of the landfill gas collection network, improved waste diversion and recycling programs
- The District will work with environmental groups and provincial agencies to mitigate impacts on wildlife as part of the lateral expansion. Work with an external Qualified Environmental Professional (QEP) and internal environmental group will occur throughout all phases of design and construction. Additionally, a debris-flow risk assessment will be conducted.

### What will happen if the current landfill fills up before the expansion is complete?

If the current Landfill reaches capacity before the expansion is ready to accept waste, the District will move forward with exporting waste out of the region. This would be a temporary solution until the expansion is complete.

### How do I stay informed and up-to-date about the project?

Subscribe on [www.LetsTalkSquamish.ca](http://www.LetsTalkSquamish.ca) to receive regular updates on the project.

**We hope you will learn more, ask questions, and leave comments about the two amendments to the SWRMP**

**[LetsTalkSquamish.ca](http://LetsTalkSquamish.ca)**







## LANDFILL LATERAL EXPANSION SWRMP AMENDED WORDING FOR FEEDBACK

### SWRMP Reference: Section 15.2: Disposal p.35

In order to ensure sustained landfill capacity and continued regulatory compliance at all residual waste management facilities, the following activities are planned:

2016 SWRMP Wording	2022 Focused Amendment Change
In order to ensure sustained landfill capacity and continued regulatory compliance at all residual waste management facilities, the following activities are planned:	
a. Expand the landfill laterally to the east. This expansion would provide Squamish with up to 46 years of additional landfill life. However, it may be several years before it is determined whether the lateral expansion is a viable option. For example Squamish needs to consult with Squamish First Nation. This option is also dependent on other expansion options, as described below.	<b>REVISION (proposed)</b> a. The District of Squamish has evaluated short to medium term disposal options, and will move forward with expanding the Squamish Landfill laterally, to the East.
b. Expand the landfill vertically on their existing site by constructing retaining walls at the base of the existing landfill that allow the landfill to be built higher (i.e. a vertical expansion). This option has received approval-in-principle by Squamish Council. This could gain 13-14 years of additional capacity and would only accommodate the needs of current users (i.e. primarily Squamish). Whistler would continue to export their solid waste out of the region.	b. No change
c. If the Squamish Landfill receives approval to expand laterally, Squamish, with support from Whistler, Pemberton, and the SLRD should review the opportunity to designate the Squamish Landfill as a regional landfill. Whistler has indicated their intent to send their waste to the Squamish Landfill on the condition that the site meets BC Landfill Criteria guidelines and that the cost of using the disposal facility is cost competitive with out-of-region options.	c. No change
	<b>NEW CONTENT (proposed)</b> d. If the District is unable to move forward with the lateral landfill expansion, they will expand the current Transfer Station, or site a new one, to facilitate the export of waste out of the region.

You can find the Full Solid Waste & Resource Management Plan at:  
[www.slrd.bc.ca/inside-slrd/current-projects-initiatives/solid-waste-and-resource-management-plan](http://www.slrd.bc.ca/inside-slrd/current-projects-initiatives/solid-waste-and-resource-management-plan)

We hope you will learn more, ask questions, and leave comments about the two amendments to the SWRMP.  
Please submit your comments and questions by July 15, 2022

[LetsTalkSquamish.ca](http://LetsTalkSquamish.ca)

  
**SQUAMISH**  
HARDWIRED for ADVENTURE  
[www.LetsTalkSquamish.ca](http://www.LetsTalkSquamish.ca)



## APPENDIX C: POP UP BOOTHS & LANDFILL SIGN



## APPENDIX D: LETTERS TO FIRST NATIONS

Subject: Squamish-Lillooet Regional District – Solid Waste and Resource Management Plan – Focus Amendment – Squamish Landfill Lateral Expansion

Date: July 15, 2022

Good morning,

The Squamish-Lillooet Regional District is undertaking a focused amendment of its 2016 Solid Waste and Resource Management Plan (SWRMP). The SWRMP received final approval by the BC Ministry of Environment and Climate Change Strategy (MOECCS) in March 2019. The amendment is needed to allow the District of Squamish to pursue a lateral expansion of the Squamish Landfill, which is on track to reach capacity in late 2028 or early 2029.

The MOECCS has requested the SLRD to engage with Nations SLRD determines to be potentially impacted by the project. In the case of the focus amendment, the SLRD believes Lower Stl'átl'imx Tribal Council could be interested to be part of the consultation process.

An official invitation and an Information package are attached to this email.

Should you have questions about the project, or should you wish to provide comments, we ask you provide them before September 16, 2022, by email or mail, at your preference.

Kind regards  
Marie-Lou

**Marie-Lou Leblanc**  
**Resource Recovery Coordinator**



Box 219, 1350 Aster Street  
Pemberton, BC V0N 2L0  
P. 604-894-6371 TF. 800-298-7753  
F. 604-894-6526  
info@slrd.bc.ca www.slrd.bc.ca

July 15, 2022

**ATTN: Lower Stl'átl'imx Tribal Council (email only)**

**Re: Invitation to comment before September 16, 2022--Squamish-Lillooet Regional District Solid Waste and Resource Management Plan (SWRMP) – Focused Amendment – Squamish Landfill Lateral Expansion**

This letter is to inform that the Squamish-Lillooet Regional District (SLRD) is undertaking a focused amendment of its 2016 Solid Waste and Resource Management Plan (SWRMP). The SWRMP received final approval by the BC Ministry of Environment and Climate Change Strategy (MOECCS) in March 2019. The amendment is needed to allow the District of Squamish to pursue a lateral expansion of the Squamish Landfill, which is on track to reach capacity in late 2028 or early 2029.

Should you have questions about the project, or should you wish to provide comments, we ask you provide them before September 16, 2022, by email or mail, at your preference.

Solid waste within the SLRD, which includes the District of Squamish, is managed according to the SLRD SWRMP which provides a long-term vision for how the region handles solid waste as well as waste reduction, diversion, and disposal activities. The SWRMP can be reviewed [here](#).

The MOECCS oversees the management of solid waste including the SWRMP management and approval. The MOECCS has requested the SLRD to engage with Skwxwú7mesh Úxwumixw Nation, Tsleil-Waututh Nation and other Nations SLRD determines to be potentially impacted by the project. In the case of the focused amendment, the SLRD determines Líl'wat Nation, N'Quatqua Nation and Lower Stl'átl'imx Tribal Council should additionally be part of the consultation process.

The District of Squamish is working to expand the landfill laterally to the east of the current landfill. The Squamish Landfill services residents and businesses of the District of Squamish, Skwxwú7mesh Úxwumixw, Britannia Beach, Furry Creek, as well as the Squamish and Paradise Valleys.

The lateral landfill expansion project aims to:

- Ensure local waste disposal for the next 25+ years;
- Be innovative and flexible to be more than “just a landfill” in the future;
- Integrate smoothly with existing infrastructure to provide environmentally sound operations;
- Upgrade the transfer station to provide increased waste diversion opportunities;
- Reduce the impact of leachate on the District of Squamish sewer system; and

---

Members: District of Squamish, Resort Municipality of Whistler, Village of Pemberton, District of Lillooet, Electoral Areas A, B, C, and D

- 2 -

- Utilize the unused future landfill area to temporarily support circular economy and reuse initiatives.

Two amendments of the SWRMP Focused Amendment are being proposed. The first will allow for the lateral expansion of the Squamish Landfill as the preferred option. The second amendment, will allow for waste to be exported out of the region, should the lateral expansion not be possible, or if a temporary waste disposal solution is needed. The proposed changes to the SWRMP are as follows:



- 3 -

2016 SWRMP Wording	2022 Focused Amendment Change
<p><b>Section 15.2:</b> In order to ensure sustained landfill capacity and continued regulatory compliance at all residual waste management facilities, the following activities are planned:</p> <p>1. Expand Squamish Landfill to increase the capacity of the landfill. Within the current disposal management operations, the DOS landfill will reach capacity in 2018. An expansion can include a number of steps:</p>	
<p>a) Expand the landfill laterally to the east. This expansion would provide Squamish with up to 46 years of additional landfill life. However, it may be several years before it is determined whether the lateral expansion is a viable option. For example Squamish needs to consult with Squamish First Nation. This option is also dependent on other expansion options, as described below</p>	<p><b>REVISION</b> (proposed) a. The District of Squamish has evaluated short to medium term disposal options, and will move forward with expanding the Squamish Landfill laterally, to the East.</p>
<p>b) Expand the landfill vertically on their existing site by constructing retaining walls at the base of the existing landfill that allow the landfill to be built higher (i.e. a vertical expansion). This option has received approval-in-principle by Squamish Council. This could gain 13-14 years of additional capacity and would only accommodate the needs of current users (i.e. primarily Squamish). Whistler would continue to export their solid waste out of the region.</p>	<p>b. No change</p>
<p>c) If the Squamish Landfill receives approval to expand laterally, Squamish, with support from Whistler, Pemberton, and the SLRD should review the opportunity to designate the Squamish Landfill as a regional landfill. Whistler has indicated their intent to send their waste to the Squamish Landfill on the condition that the site meets BC Landfill Criteria guidelines and that the cost of using the disposal facility is cost competitive with out-of-region options.</p>	<p>c. No change</p>
	<p><b>NEW CONTENT</b> (proposed) d. If the District of Squamish is unable to move forward with the lateral landfill expansion, they will expand the current Transfer Station, or site a new one, to facilitate the export of waste out of the region.</p>

Members: District of Squamish, Resort Municipality of Whistler, Village of Pemberton, District of Lillooet, Electoral Areas A, B, C, and D



- 4 -

The full project, should it proceed, will include:

- Land acquisition;
- Archaeologic impact assessment;
- Debris-flow risk assessment;
- Upgrades to the site design;
- Traffic impact study;
- Increased environmental and nuisance controls;
- Leachate pre-treatment system installation; and
- Engagement and consultation with the public and government bodies, including First Nations.

Please find a project overview attached, which includes a high-level map identifying the expansion area as well as answers to some of the frequently asked questions the District of Squamish has already received regarding the project. The project website is constantly updated and can be reviewed on the [Let's Talk Squamish / Lateral Landfill Expansion](#) webpage.

The project is in the early stages, and we invite your participation by September 16. If there is interest, we can schedule phone interviews to discuss current and future priorities for the project area and the overall vision for the region.

Thank you for taking the time to review the information about this important regional project. We look forward to hearing from you should you have any questions or comments.

Sincerely,

*Marie-Lou Leblanc*  
Marie-Lou Leblanc  
Resource Recovery Coordinator  
Squamish-Lillooet Regional District  
[mleblanc@slrd.bc.ca](mailto:mleblanc@slrd.bc.ca)

*Shannon White*  
Shannon White  
Integrated Solid Waste Specialist  
District of Squamish  
[swhite@squamish.ca](mailto:swhite@squamish.ca)

Enclosures:

1. Project overview
2. Frequently asked questions
3. High-level map
4. SWRMP amended wording for feedback

## APPENDIX E: LETTERS TO NEIGHBOURS



July 8, 2022

Hello,

You are receiving this letter as you own a property(ies) within 1,500 meters of the Squamish Landfill. The Squamish Landfill is on track to reach capacity in late 2028 or early 2029. To ensure that residents and businesses continue to have a local waste disposal option, the District of Squamish is working to expand the Landfill laterally to the east of the current Landfill. This is an opportunity for you to ask questions about the project and provide input into the process.

The District of Squamish has engaged the Landfill Engineering firm Sperling Hansen & Associates to design the Landfill's expansion and ensure that it exceeds regulatory requirements for design and environmental controls. BGC Engineering, has been retained to conduct a debris-flow risk assessment that includes an analysis to ensure that there is no transfer of risk to surrounding properties.

The Lateral Landfill Expansion also includes:

- Increased diversion opportunities
- Space for circular economy
- Installation of leachate treatment system
- Environmental well installation
- Upgrade to site entrance
- Archeological impact assessment
- Traffic impact and flow assessment
- Debris-flow risk assessment

### Background:

Solid waste in Squamish is managed according to the Squamish-Lillooet Regional District's (SLRD) Solid Waste and Resource Management Plan (SWRMP), which was published in 2016. The SWRMP provides a long-term vision for how the region will handle solid waste, as well as waste reduction, diversion, and disposal activities. The Ministry of Environment and Climate Change Strategy (MOECCS) oversees the SWRMP.

The District of Squamish is working with the SLRD to add a focused amendment to the existing SWRMP that will explicitly allow for the lateral expansion of the Squamish Landfill. While not the preferred option, an additional clause will be added that will allow for waste to be exported out of the region as an alternative option. While not anticipated, if a lateral expansion is not possible for any reason, or a temporary waste disposal solution is needed, the District will move forward with waste export. Enclosed you can find the amendment wording plus a map of the proposed expansion.

### We Want to Hear From You!

The District and SLRD are extremely interested to hear your questions and comments on the project and the SLRD SWRMP Focused Amendment. You can do that by entering them on [www.letstalksquamish.ca](http://www.letstalksquamish.ca) (at the bottom of page). The deadline for comments and questions to be included in the submission of the Focused Amendment to the MOECCS, is September 9, 2022. If you want to stay informed about the project, visit this site and subscribe to receive ongoing updates. If you have renters on your property, we encourage you to share this information with them.

Thank you,

**Shannon White**

Integrated Solid Waste Specialist  
District of Squamish  
[zerowaste@squamish.ca](mailto:zerowaste@squamish.ca) | 604-848-4455

**Marie-Lou Leblanc**

Resource Recovery Coordinator  
Squamish-Lillooet Regional District  
[utilities@slrd.bc.ca](mailto:utilities@slrd.bc.ca) | 604-894-6371 x236

District of Squamish 37955 Second Avenue PO Box 310 Squamish British Columbia V8B 0A3  
Ph: 604.892.5217 or 1.877.892.5217 [squamish.ca](http://squamish.ca)



Squamish Connect Referral ID: #96

June 10, 2022

Hello,

As you may be aware, the Squamish Landfill is on track to reach capacity in late 2028 or early 2029. To ensure that residents and businesses continue to have a local waste disposal option, the District of Squamish is working to expand the Landfill laterally to the east of the current Landfill. We have been working closely with a team from Squamish Nation, and we would like to connect directly with Squamish Nation as to whether there is any feedback on the Focused Amendment to the Squamish-Lillooet Regional District's (SLRD) Solid Waste and Resource Management Plan (SWRMP), as outlined in the enclosed documents and email communications.

The District of Squamish has engaged the Landfill Engineering firm Sperling Hansen & Associates to design the Landfill's expansion and ensure that it exceeds regulatory requirements for design and environmental controls. BGC Engineering, has been retained to conduct a debris-flow risk assessment that includes an analysis to ensure that there is no transfer of risk to surrounding properties.

The Lateral Landfill Expansion also includes:

- Increased diversion opportunities
- Space for circular economy
- Installation of leachate treatment system
- Environmental well installation
- Upgrade to site entrance
- Archeological impact assessment
- Traffic impact and flow assessment
- Debris-flow risk assessment

#### **Background:**

Solid waste in Squamish is managed according to the Squamish-Lillooet Regional District's (SLRD) Solid Waste and Resource Management Plan (SWRMP), which was published in 2016. The SWRMP provides a long-term vision for how the region will handle solid waste, as well as waste reduction, diversion, and disposal activities. The Ministry of Environment and Climate Change Strategy (MOECCS) oversees the SWRMP.

The District of Squamish is working with the SLRD to add a focused amendment to the existing SWRMP that will explicitly allow for the lateral expansion of the Squamish Landfill. While not the preferred option, an additional clause will be added that will allow for waste to be exported out of the region as an alternative option. While not anticipated, if a lateral expansion is not possible for any reason, or a temporary waste disposal solution is needed, the District will move forward with waste export. Enclosed you can find the amendment wording plus a map of the proposed expansion.

#### **We Want to Hear From You!**

The District and SLRD would like to hear your questions and comments on the SLRD SWRMP Focused Amendment. You can do that by emailing Shannon directly, at the contact info below. The deadline for comments and questions to be included in the submission of the Focused Amendment to the MOECCS, is July 15, 2022.

The District of Squamish looks forward to the continued collaboration with the Squamish Nation team, throughout this project, beyond the SLRD SWRMP Focused Amendment.

Thank you,

#### **Shannon White**

Integrated Solid Waste Specialist  
District of Squamish  
swhite@squamish.ca | 604-848-4455

#### **Marie-Lou Leblanc**

Resource Recovery Coordinator  
Squamish-Lillooet Regional District  
utilities@slrd.bc.ca | 604-894-6371 x236

District of Squamish 37955 Second Avenue PO Box 310 Squamish British Columbia V8B 0A3  
Ph: 604.892.5217 or 1.877.892.5217 [squamish.ca](http://squamish.ca)



# DISTRICT OF SQUAMISH

[f](#)
[t](#)
[i](#)
[v](#)






## SQUAMISH IS EXPANDING ITS LANDFILL LATERALLY

Did you know that the Squamish Landfill is on track to reach capacity within the next six years? The District of Squamish is pursuing a lateral expansion to the existing landfill to ensure there is local capacity for waste management.

This requires an amendment to the Squamish Lilfoot Regional District's Solid Waste & Resource Management Act to include explicit approval of the lateral expansion of the Squamish Landfill, as well as waste export out of the region for the back-up capacity.

Visit us at one of the following locations to learn more and have your questions answered by our team!

Friday, June 3	2-5 p.m.	Squamish Landfill
Sunday, June 5	10-12 p.m.	Britannia Beach's Playground
Wednesday, June 8	6-8 p.m.	Online Open House <a href="#">letsstalksquamish.ca</a>
Thursday, June 9	6-8 p.m.	Oliver's Landfill in Furry Creek

Learn more and ask your questions online:

[letsstalksquamish.ca](http://letsstalksquamish.ca)

Squamish Chief Ads May 26, June 2, &amp; September 15, 2022

8 | THURSDAY, MAY 26, 2022

squamishchief.com

## DISTRICT OF SQUAMISH



## SEEKING BOARD OF VARIANCE MEMBER

The District of Squamish is looking for one new member to fill the remainder of a three-year term, ending May 31, 2024, on the Board of Variance. Interested members of the public are encouraged to submit an application and resume.

Boards of Variance in B.C. sit to consider applications from property owners requesting variances to zoning and land use bylaws. The Squamish Board of Variance meets on the third Wednesday of each month at 6:30 p.m., as necessary, if an application is received.

Application forms are available at Municipal Hall and on the District of Squamish website: [squamish.ca/committees](https://squamish.ca/committees).

Applications should be received no later than 4:30 p.m. on Friday, June 10, 2022.

Please direct to:  
Manager of Legislative Services,  
District of Squamish  
37955 Second Avenue, PO Box 310  
Squamish, BC, V8B 0A3

Or by email to [cpawluk@squamish.ca](mailto:cpawluk@squamish.ca)

## RECYCLING TIP

Clothing and textiles cannot be recycled in your curbside tote.

Cloth can get caught in machinery, causing a safety hazard for workers, and damaging the clothing.

The best way to dispose of clothing is to donate to a local second hand store or use the clothing donation bin at the Squamish Landfill.

If items can't be donated, consider using them as cleaning rags. If there is no need for that, they should be put in your garbage.

[squamish.ca/WhatGoesWhere](https://squamish.ca/WhatGoesWhere)

## SQUAMISH ALERT

**GET NOTIFIED DURING A LOCAL EMERGENCY**

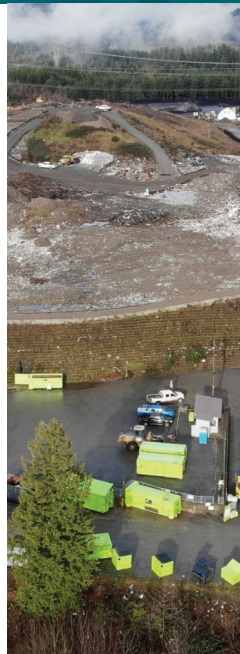
Download the app or sign up for alerts by

- ☐ text
- ☐ email
- ☐ voice message

[squamish.ca/alert](https://squamish.ca/alert)

**SQUAMISH ALERT**

Powered by Voyent Alert



## LANDFILL LATERAL EXPANSION

Did you know that the Squamish Landfill is on track to reach capacity within the next six years? The District of Squamish is pursuing a lateral expansion to the existing landfill to ensure there is local capacity for waste management.

This requires an amendment to the Squamish Lillooet Regional District's Solid Waste & Resource Management Plan to include explicit approval of the lateral expansion of the Squamish Landfill, as well as waste export out of region (as the back-up option).

Visit us at one of the following locations to learn more and have your questions answered by our team!

<b>Tuesday, May 31</b>	3-5 p.m.	The Nester's Depot in Whistler
<b>Wednesday, June 1</b>	5-7:30 p.m.	Public Works Yard
<b>Friday, June 3</b>	2-5 p.m.	Squamish Landfill
<b>Sunday, June 5</b>	10-12 p.m.	Britannia Beach's Playground
<b>Wednesday, June 8</b>	6-8 p.m.	Online Open House: Link will be available at <a href="https://letstalksquamish.ca">letstalksquamish.ca</a>
<b>Thursday, June 9</b>	6-8 p.m.	Oliver's Landing in Furry Creek

Learn more and ask questions online at: [letstalksquamish.ca](https://letstalksquamish.ca)

## BUSINESS OPPORTUNITIES

- Active Transportation Sidewalk Improvements - Request for Quotation
- Zero Waste Strategy Update - Request for Proposals

[squamish.ca/doing-business-with-the-district](https://squamish.ca/doing-business-with-the-district)

## DEVELOPMENT SHOWCASE

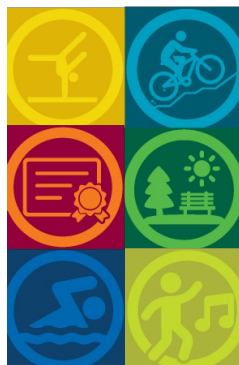
The following new applications have been added:

- Garibaldi Springs - Phase 2 at 2100 Newport Drive - Development Permit

To review and comment on all active applications:

[squamish.ca/showcase](https://squamish.ca/showcase)

## WHAT'S HAPPENING IN RECREATION SERVICES



## LEAP 3-5 yrs

LEAP will provide children with an opportunity to be physically active and develop their movement skills while taking part in a variety of activities in different environments designed to support individual growth and development. Each week offers a different theme.

Every day, starting July 4,  
9 - 11 a.m.  
Brennan Park Recreation Centre  
Register at [squamish.ca/rec](https://squamish.ca/rec)

## Leadership Courses 10-14 yrs

Squamish Recreation Services offers a variety of leadership courses to support youth of all ages. Learn important life skills, build confidence, and earn certifications that will add value to your resume - all while making new connections and having fun!

**Level 1 - Leadership - 10 to 12yrs**  
July 4-8  
9 a.m - 4 p.m.  
\$295

**Level 2 - Leadership - 11 to 13yrs**  
July 11-15  
9 a.m - 4 p.m.  
\$295

**Level 3 - Leadership - 13 to 14yrs**  
August 22-26  
9 a.m - 4 p.m.  
\$295

Register at [squamish.ca/rec](https://squamish.ca/rec)





## DISTRICT OF SQUAMISH



## PUBLIC NOTICE

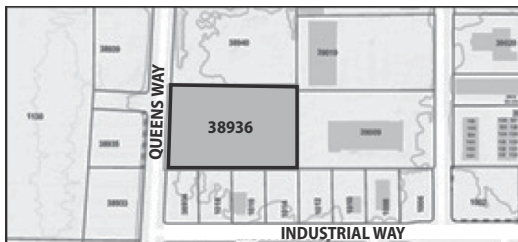
### TEMPORARY USE PERMITS

#### WHAT'S PROPOSED

##### 20 – 38936 Queens Way | TEMPORARY USE PERMIT NO. DTU00018

The District of Squamish is considering renewal of a Temporary Use Permit application for office use located at 20 – 38936 Queens Way.

The property is zoned I-4 (Used Goods Industrial). The proposed office use is not permitted in the I-4 Zone. If approved, the TUP would allow the office use for a period of up to 3 years.

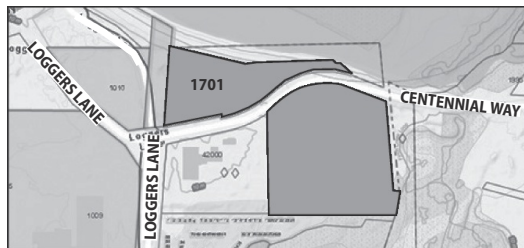


#### WHAT'S PROPOSED

##### 1701 Centennial Way | TEMPORARY USE PERMIT NO. DTU00028

The District of Squamish is considering issuance of a Temporary Use Permit (TUP) located at 1701 Centennial Way.

The property is zoned Comprehensive Development Zone 90 (CD-90). The TUP would allow for a Presentation and Sales Centre on the northern (1701 Centennial Way) portion of the property shown on the Location Map below. If approved, the TUP renewal would allow the sales centre use for a period of up to 3 years.



#### HAVE YOUR SAY

A copy of the proposed Temporary Use Permits are available for review at Municipal Hall, 37955 Second Avenue, Squamish, B.C., Monday to Friday from 10 a.m. to 3 p.m.

Should you wish to review the applications by appointment during Municipal Hall hours or have any questions about the applications, please call 604.815.5002, Monday to Friday from 8:30 a.m. to 4:30 p.m.

A copy of the proposed Temporary Use Permits can be emailed out by requests sent to [planning@squamish.ca](mailto:planning@squamish.ca). The Temporary Use Permits can also be reviewed on the District's online Development Showcase at [squamish.ca/showcase](http://squamish.ca/showcase).

All public input will be considered by the District in review of the Temporary Use Permit applications. Written and email submissions can be addressed to the Director of Community Planning and will be received until **4 p.m. on June 8, 2022**. Submissions will form part of the public record.

The resolutions on the Temporary Use Permit applications will be considered by the Director of Community Planning on June 9, 2022 at Municipal Hall, 37955 Second Avenue, Squamish, British Columbia.

## LANDFILL LATERAL EXPANSION

Did you know that the Squamish Landfill is on track to reach capacity within the next six years? The District of Squamish is pursuing a lateral expansion to the existing landfill to ensure there is local capacity for waste management.

This requires an amendment to the Squamish Lillooet Regional District's Solid Waste & Resource Management Plan to include explicit approval of the lateral expansion of the Squamish Landfill, as well as waste export out of the region (as the back-up option).

Visit us at one of the following locations to learn more and have your questions answered by our team!

Friday, June 3	2-5 p.m.	Squamish Landfill
Sunday, June 5	10-12 p.m.	Britannia Beach's Playground
Wednesday, June 8	6-8 p.m.	Online Open House: Link will be available at <a href="http://letstalksquish.ca">letstalksquish.ca</a>
Thursday, June 9	6-8 p.m.	Oliver's Landing in Furry Creek

Learn more and ask questions: [letstalksquish.ca](http://letstalksquish.ca)

## SEEKING BOARD OF VARIANCE MEMBER

The District of Squamish is looking for one new member to fill the remainder of a three-year term, ending May 31, 2024, on the Board of Variance. Interested members of the public are encouraged to submit an application and resume.

Boards of Variance in B.C. sit to consider applications from property owners requesting variances to zoning and land use bylaws. The Squamish Board of Variance meets on the third Wednesday of each month at 6:30 p.m., as necessary, if an application is received.

Application forms are available at Municipal Hall and on the District of Squamish website: [squamish.ca/committees](http://squamish.ca/committees).

Applications should be received no later than 4:30 p.m. on Friday, June 10, 2022.

Please direct to: Manager of Legislative Services, District of Squamish, 37955 Second Avenue, PO Box 310, Squamish, BC, V8B 0A3

Or by email to [cpawluk@squamish.ca](mailto:cpawluk@squamish.ca)

## BUSINESS OPPORTUNITIES

- Active Transportation Sidewalk Improvements - Request for Quotation
- Fire Pumper Apparatus - Request for Proposals
- Canoe Procurement Group - Notice of Intent

[squamish.ca/doing-business-with-the-district](http://squamish.ca/doing-business-with-the-district)

## DEVELOPMENT REVIEW

The following new application has been added:

- Garibaldi Springs - Phase 2 at 2100 Newport Drive - Development Permit

To review and comment on all active applications:

[squamish.ca/showcase](http://squamish.ca/showcase)

## INFRASTRUCTURE IMPROVEMENT WORK

Active transportation improvements to the roundabout at The Boulevard and Highlands Way South including a new multi-use path will take place from June to August.

Expect traffic delays.

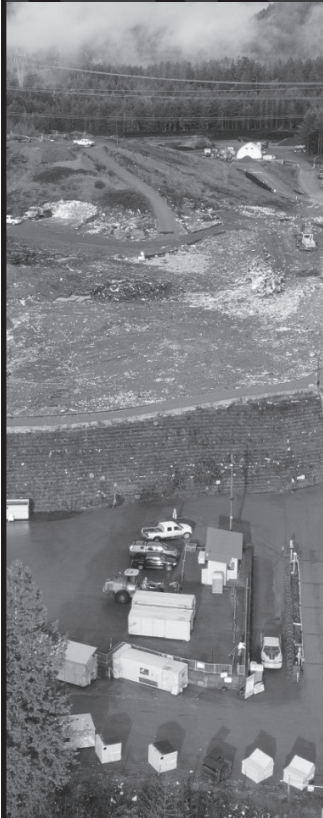
## SANITARY SEWER FLUSHING, VIDEO INSPECTION AND VAPOUR TESTING

CCTV inspection and vapour testing in the Industrial Park, Loggers Lane, Hospital Hill and Valleycliffe areas is scheduled to begin next week and continue through the end of June.

Detailed notices will be delivered to residents and businesses in the area in advance of work starting.

[squamish.ca/capital-projects](http://squamish.ca/capital-projects)

## DISTRICT OF SQUAMISH



### NOTICE OF DEADLINE FOR FEEDBACK ON THE LATERAL EXPANSION OF THE SQUAMISH LANDFILL

The final opportunity is approaching to provide feedback on the Focused Amendment of the Squamish-Lillooet Regional District Solid Waste & Resource Management Plan, regarding the Lateral Expansion of the Squamish Landfill. For more information and to submit your feedback or questions, visit us online at [letstalksquamish.ca](http://letstalksquamish.ca) or email [utilities@slrd.bc.ca](mailto:utilities@slrd.bc.ca).

**Deadline: September 16, 2022**





Bridge River-Lillooet News June 15, September 7 & 14, 2022

## DISTRICT OF SQUAMISH



### SQUAMISH'S LANDFILL EXPANSION REQUIRES SLRD AMENDMENT

The Squamish Landfill is on track to reach capacity within the next six years and the District of Squamish is pursuing a lateral expansion to the existing landfill to ensure there is local capacity for waste management.

This requires an amendment to the Squamish Lillooet Regional District's Solid Waste & Resource Management Plan to include explicit approval of the lateral expansion of the Squamish Landfill, as well as waste export out of the region (as the back-up option).

Visit us online at [letstalksquamish.ca](http://letstalksquamish.ca) if you'd like to learn more or email [utilities@slrd.bc.ca](mailto:utilities@slrd.bc.ca).

Please submit your comments by July 15, 2022.



# Wildfire activity in B.C. is anticipated to extend into September

## Although below 20-year average this year

British Columbians should remain alert to the threat of wildfires as conditions remain warm and dry throughout September.

Seasonal and above-seasonal temperatures forecast for September mean that wildfire risk remains a concern throughout the province.

New wildfire starts are anticipated, however, the BC Wildfire Service has adequate resources and is prepared to activate additional resources if required.

As of Aug. 31, 2022, there were 182 active wildfires in the province.

There is currently one wildfire of note, the

Fat Dog Creek wildfire (V12147) in EC Manning Provincial Park.

The BC Wildfire Service is also responding to a wildfire five kilometres southwest of the Hudson's Hope bridge in the Prince George Fire Centre.

A wildfire of note is classified as a wildfire that is especially visible or poses a threat to public safety.

For the latest information on these incidents, visit: <https://www2.gov.bc.ca/gov/content/safety/wildfire-status>

Since April 1, 2022, there have been 1,355 wildfires in B.C. that have resulted in 43,000 hectares burned.

Of these 1,355 wildfires, 93 per cent are out, under control or being held.

As many as 75 per cent of the fire starts can be attributed to lightning.

Over the same time period last year, reflecting the extreme conditions faced in the province, there had been 1,562 fires with 865,298 hectares burned.

The number of wildfires and area burned are lower than the 20-year average for British Columbia at this time of year, which is 1,515 fires, and notably, 259,601 hectares burned.

"B.C. is currently experiencing one of the lowest human-caused wildfire seasons since 1950.

"Together with the BC Wildfire Service, I want to commend the public on their safe fire use and

diligence in helping to prevent the spread of fire.

"We're asking all British Columbians to continue the great work they have been doing this season as we stay vigilant over the Labour Day weekend and for the remainder of the 2022 fire season," said Katrine Conroy, Minister of Forests.

"I also want to thank all BC Wildfire Service staff, contractors, First Nations and industry partners for your service this season to protect communities."

If there is a fire in your community, call (toll-free) 1 800 663-5555 (or \*5555 from a cellphone) or use the Report of Fire function on the BC Wildfire Service app as soon as possible.

Information from the public is crucial to the effectiveness of the BC

Wildfire Service's response.

Provide any information you can and expect to be asked details about the fire. If using the mobile app, submit with a photo.

Reports with a photo allow the BC Wildfire Service to quickly assess and narrow down the location of the fire.

If you are under an evacuation order, follow directions from your First Nation or local government.


You can register with Emergency Support Services (ESS) online: <https://ess.gov.bc.ca/>.

"We were prepared for a challenging wildfire season after the devastating 2021 season, and it's a relief that we haven't seen major damage to communities or large evacuations this year," said Jennifer Rice, Parliamentary

Secretary for Emergency Preparedness. "While overall this has been a quieter wildfire season, my thoughts are with everyone who evacuated or lost a home this year."

This year, the Province announced \$359 million in Budget 2022 to protect British Columbians from wildfires, including \$145 million to strengthen the BC Wildfire Service and Emergency Management BC.

This is the largest investment in the history of the wildfire service and is helping transform the BC Wildfire Service into a year-round service, shifting from its reactive mode to a more proactive approach. It will enable the BC Wildfire Service to focus on all four pillars of wildfire management: prevention and mitigation; preparedness; response; and recovery.



**Learn More. Achieve More.**  
If you or an adult you know would like to improve reading, writing or math skills, look under **LEARN** in the Yellow Pages™ or visit [www.LookUnderLearn.ca](http://www.LookUnderLearn.ca)

**ABC**  
Life Literacy Canada

### Public notice: Canadian Navigable Waters Act

BC Hydro hereby gives notice that a submission has been added to the Common Project Search (online registry) pursuant to the Canadian Navigable Waters Act described herein and its description.

Pursuant to paragraph 4.1 and 9.1 of the said Act, BC Hydro has deposited with the Minister of Transport, on the on-line Common Project Search Registry ([cps.canada.ca](http://cps.canada.ca)) and under registry number **5703**, a description of the following work:

Replacement of the Spillway and Public Safety Boom on Carpenter Lake Reservoir, at Terzaghi Generating Station.

The new boom will be in the same footprint as the existing boom, and is in place to protect the public from the spillway.

Posted at Vancouver, B.C. this 1st day of September, 2022.

**BC Hydro**  
Power smart

5988

## DISTRICT OF SQUAMISH

f t i n y

### NOTICE OF DEADLINE FOR FEEDBACK ON THE LATERAL EXPANSION OF THE SQUAMISH LANDFILL

The final opportunity is approaching to provide feedback on the Focused Amendment of the Squamish-Lillooet Regional District Solid Waste & Resource Management Plan, regarding the Lateral Expansion of the Squamish Landfill. For more information and to submit your feedback or questions, visit us online at [letstalksquamish.ca](http://letstalksquamish.ca) or email [utilities@slrd.bc.ca](mailto:utilities@slrd.bc.ca).

**Deadline: September 16, 2022**

**SQUAMISH**  
HARDWIRED for ADVENTURE

**SQUAMISH - LILLOOET**  
REGIONAL DISTRICT



# CO reports local RCMP fully staffed

## Housing shortage remains an issue

JONATHAN KERSLAKE

The commanding officer of the Lillooet RCMP detachment, Sgt. Scott Clay, made a report to Mayor and Council at the regular council meeting on Sept. 6 to provide an update on local policing services.

Sgt. Clay began his report by explaining that—since the destruction of the Lytton RCMP detachment in the devastating fire of June 30, 2021—the Lillooet detachment had been providing service for the entire geographical area once covered by both stations.

"We're not seeing a huge increase in calls coming in," said Clay, of the level of demand for policing in the combined areas.

"In fact, we've kind of supplemented our local operations by being able to utilize the detachment members from Lytton, along with the office support staff," he observed.

"Currently, we're showing a full complement of staff in Lillooet."

Given that as recently as one year ago there were several vacant spots on Lillooet's policing roster—a particular source of concern

for those members of the community impacted by what seemed like a prolonged and consistent spree of property thefts last year—the need for a fully staffed detachment was a topic raised at several previous council meetings.

Clay went on to mention that his staffing level would be—albeit briefly—diminished by the departure of his second-in-command, Cpl. Denise Benfeld on Sept. 7.

"She will be a huge loss to this detachment, and to this community," said Clay, before adding—of Benfeld's new posting as CO of the Ashcroft detachment:

"Thankfully, she'll just be an hour down the road, so she can frequently be called upon for her local knowledge and expertise."

Although Lillooet would consequently be short-handed with the loss of Benfeld, Clay reported that her replacement had already been identified.

"My hope is I'll have them in post before Christmas," said Clay, of the new corporal, whom he described as having "a wide, wide

knowledge base and experience base," after spending 18 years on the force in Surrey.

"It's the first time he'll have done what I'll call small-town policing," noted Clay, who pointed out: "Lillooet was an ask for him... he and his wife are looking forward to getting here."

Despite the interval during which the local police force would be diminished by one member, Clay observed that he was "comfortable that we are adequately staffed to keep meeting the needs and the mandate in the community."

The situation in Lytton, however, Clay described as "a challenge."

"We've had setbacks and delays with our temporary office going in down there," he explained—an experience shared by many Lyttonites, to be sure.

Despite the delays, the new office—a modular building currently being constructed in Langley—is apparently on track to be open by the end of October.

The hold-ups in getting the office open, however, were only one aspect of situation in Lytton proving challenging.

"I am losing some staff down there this month," said Clay, "and again later in the year."

While no replacement staff

had currently been found, Clay assured Council that he was "working with RCMP Staffing and South East District," to fill the looming gaps in the Lytton detachment "so that we're not going to be drawing on our Lillooet members to support ongoing Lytton operations."

One of the problems that has historically made it difficult to fill policing positions in small towns has always been finding adequate housing for the constables and their families.

To that end, Clay pointed to the recent purchase of a house in Lytton to help house Mounties in the southern end of the service area.

The situation in Lillooet, however, did not look quite as bright on the police housing front.

Noting the need for three more houses "for our existing establishment" in Lillooet, Clay went on to observe: "the purchasing of staff houses... has been put on hold."

He also told Council that plans to replace the local detachment building itself had been similarly paused, adding: "I just wanted to make the Council aware of that... for you guys to have that situational awareness."

Councillor Howe then asked if there was "any information you can share with us about why?"

Clay responded by saying—although he understood it to be a funding issue—he was unable to provide further details.

"A lot of it is discussed at a much higher level than me, as your detachment commander," he observed with a wry chuckle.

Mayor Busse, however, pointed out that in a previous telephone discussion with the RCMP and the Province, the District had been given "a commitment... that we would receive seven units, whether they are purchased or built."

The Mayor then observed:

"I think it behooves us to get a hold of the appropriate people down there, and say: 'okay, what's going on?' So we'll carry that forward."

Although Clay told the mayor he appreciated such efforts, he also observed:

"If there's one thing I've learned in 20 years of policing, and almost 10 years of being a detachment commander... once you have buy-in and support, you've got to run with it while you can—just in case something like this happens."

The question of when—or whether—the promise of adequate police housing will eventually be fulfilled remained, at the end of Clay's report, unclear.

## DISTRICT OF SQUAMISH



## NOTICE OF DEADLINE FOR FEEDBACK ON THE LATERAL EXPANSION OF THE SQUAMISH LANDFILL

The final opportunity is approaching to provide feedback on the Focused Amendment of the Squamish-Lillooet Regional District Solid Waste & Resource Management Plan, regarding the Lateral Expansion of the Squamish Landfill. For more information and to submit your feedback or questions, visit us online at [letstalksquish.ca](http://letstalksquish.ca) or email [utilities@slrd.bc.ca](mailto:utilities@slrd.bc.ca).

**Deadline: September 16, 2022**



## Motorsport facility green-lit by Council

### Operating hours get engines revving

JONATHAN KERSLAKE

It's official! Thanks to a zoning bylaw amendment passed at the Sept. 6 regular council meeting, the Lillooet Airport Motocross Association has been given the green light to begin construction of a new motorsport facility on Airport Road.

As per municipal government protocol, a public hearing session was held at the beginning of the meeting, and although no members of the public attended in person, Mayor and Council were presented with 32 written feedback forms, primarily from residents of the area.

All the forms submitted indicated their support for the facility, with one of them adding a comment requesting the permissible hours of oper-

ation at the track to be slightly reduced, due to concerns about noise.

When the amendment was raised as an agenda item before council, that request was the sole topic of conversation.

Councillor Howe began the discussion by asking for clarification as to the proximity of the property whose owner submitted the request to change the hours.

"If they're one of the closest properties," said Howe, "I think we should strongly consider their request for the changed hours."

The general consensus amongst the other councillors was that the property in question was right above the site of the proposed motorsport track.

Mayor Busse, however,

reminded Howe of staff's suggestion that the bylaw amendment be accepted with the hours as they stood—which coincide with the hours of the municipal nuisance bylaw—and then review the hours based on whether or not any complaints were officially filed.

The purpose of the suggestion to move forward with the amendment as written being to avoid the necessity of yet another public hearing based on a change of hours.

Busse also pointed out that his own house was even closer to the track than the one from which the request for reduced hours was emanating.

"It doesn't mean that we aren't concerned," he observed, "but it goes along with the 12-gauge slugs that are going off at breakfast time."

His jocular comment—which elicited chuckles from the rest of the table—was a ref-

*Continued on Page 5*

## APPENDIX G: EMAILS TO SLRD PLAN MONITORING ADVISORY COMMITTEE

Subject: SWRMP Focused Amendment – Squamish Landfill

Date: March 30, 2022 at 1:32:08 PM PDT

Hello SWRMP Advisory Committee,

As you are aware, the District of Squamish is pursuing a focused amendment to the SLRD's SWRMP, which would provide them with the authorization from the Province to move forward with the Lateral Expansion of the Squamish Landfill, with exporting waste out of the region as their secondary or alternative plan.

To do this, the District of Squamish is proposing the below focused amendment to the wording in the SLRD SWRMP (see the blue text in the table below). They are revising one clause (a) and adding a new clause (d) to Section 15.2. They are required by the Ministry to engage on this amendment, to ensure that all member municipalities, Electoral Areas, First Nations and impacted stakeholders are aware and have the opportunity to ask questions and provide comment.

Attached is the District of Squamish's Draft Engagement Plan. Please take the time to read through the document and provide any feedback, questions or comments on the document and outlined process, you can do this in email or as track changes directly in the document. In particular, please look carefully at the specific amendment the District of Squamish is proposing.

**All feedback is due by Monday, April 13<sup>th</sup> EOD. Please email all comments to Marie-Lou and cc Vanessa).** The District of Squamish will then respond to any outstanding questions, incorporate the feedback and will move forward with the SLRD in executing the engagement, as outlined.

Please don't hesitate to reach out to Marie-Lou and Shannon White if you have any questions or concerns.

### SWRMP Amended Wording for Feedback:

Following (in blue) is the proposed focused amendment to the wording in the SLRD's SWRMP, to be included in the engagement:

SWRMP Reference	2016 SWRMP Wording	2022 Focused Amendment Change
Section 15.2: Disposal	In order to ensure sustained landfill capacity and continued regulatory compliance at all residual waste	

p.35	<p>management facilities, the following activities are planned:</p> <p>1. Expand the Squamish Landfill to increase the capacity of the landfill. Within the current disposal management operations, the DOS landfill will reach capacity in 2018. An expansion can include a number of steps:</p> <p>a) Expand the landfill laterally to the east. This expansion would provide Squamish with up to 46 years of additional landfill life. However, it may be several years before it is determined whether the lateral expansion is a viable option. For example Squamish needs to consult with Squamish First Nation. This option is also dependent on other expansion options, as described below.</p> <p>b) Expand the landfill vertically on their existing site by constructing retaining walls at the base of the existing landfill that allow the landfill to be built higher (i.e. a vertical expansion). This option has received approval-in-principle by Squamish Council. This could gain 13-14 years of additional capacity and would only accommodate the needs of current users (i.e. primarily Squamish). Whistler would continue to export their solid waste out of the region.</p> <p>c) If the Squamish Landfill receives approval to expand laterally, Squamish, with support from Whistler, Pemberton, and the SLRD should review the opportunity to designate the</p>	<p><b><u>REVISION (proposed):</u></b></p> <ul style="list-style-type: none"> <li>• The District of Squamish has evaluated short to medium term disposal options, and will move forward with expanding the Squamish Landfill laterally, to the East.</li> <li>• No change</li> <li>• No change</li> </ul> <p><b><u>NEW CONTENT (proposed):</u></b></p> <p>d. If the District is unable to move forward with the lateral landfill expansion, they will expand the current Transfer Station, or site a new one, to facilitate the export of waste out of the region.</p>
------	---	---

	<p>Squamish Landfill as a regional landfill. Whistler has indicated their intent to send their waste to the Squamish Landfill on the condition that the site meets BC Landfill Criteria guidelines and that the cost of using the disposal facility is cost competitive with out-of-region options.</p>	
--	---	--

Kind regards

**Marie-Lou Leblanc**  
**Resource Recovery Coordinator**



Subject: RE: Solid Waste & Resource Management Plan Monitoring Advisory  
Committee – Next Meeting Doodle poll  
Date: June 6, 2022 at 3:16:49 PM PDT

Good afternoon everyone,

A message from Shannon White at the District of Squamish regarding the ongoing public engagement for the Solid Waste & Resource Management Plan Focus Amendment – Squamish Landfill Lateral Expansion.

**Interested in Providing Input or Learning More about the Squamish Landfill Expansion?**

As you are aware, the Squamish Landfill is on track to reach capacity within the next six years. The District of Squamish is pursuing a lateral expansion to the existing landfill to ensure there is local capacity for waste management.

As previously presented by Shannon White from Squamish, this requires an amendment to the Squamish Lillooet Regional District's Solid Waste & Resource Management Plan to include explicit approval of the lateral expansion of the Squamish Landfill, as well as waste export out of the region (as the back-up option).

The Advisory Committee has the opportunity to provide comments and ask questions via [www.letstalksquamish.ca](http://www.letstalksquamish.ca) (leave the comments and questions at the bottom of the page) *OR* you can attend the online information session on Wednesday, June 8 from 6-8pm. The URL for the online Open House will be on [www.letstalksquamish.ca](http://www.letstalksquamish.ca).

You can also email Vanessa or Shannon (cc'd) with your questions and comments directly.

**Please note comment/question period will close on Friday July 15, 2022.**

Thanks,  
**Vanessa Lafontaine**  
**Communications and Projects Coordinator**



## APPENDIX H: EMAIL TO LET'S TALK SQUAMISH PARTICIPANTS

June 8, 2022

Hi \_\_\_\_\_,

As you may be aware, the Squamish Landfill is on track to reach capacity within the next six years. The District of Squamish is pursuing a lateral expansion to the existing landfill to ensure there continues to be local capacity for waste management.

This requires an amendment to the Squamish Lillooet Regional District's Solid Waste & Resource Management Plan to include explicit approval of the lateral expansion of the Squamish Landfill, as well as waste export out of the region as a back-up option.

**Join us tonight** for an online session to learn more about the plan to expand the Squamish Landfill to the east. There will be a brief presentation, as well as an opportunity to make comments and ask District staff members questions.

When: June 8, 2022

Time: 6:00-8:00 p.m.

Where: [Please Join the Online Meeting Using This Link](#)

If you are unable to attend the meeting this evening, please learn more, leave comments and ask questions on [LetsTalkSquamish.ca](#)

Kind regards,

The Project Team

## APPENDIX I: FEEDBACK

### Comments from the Pop Up sessions and Comment Cards

These are records of verbal comments and comment cards from these sessions. It is important to note that if a similar comment or question was raised, it was not recorded separately every time but does reflect the issues raised and the relative number of times.

Date/Location	Comment or question
<b>May 31, Whistler</b>	Why in Squamish and not in a desert area?
	What will you do about bear management?
	Will Squamish take Whistler's garbage?
	Does Squamish's material get recycled?
	How close is the site to the river?
	Fishermen want salmon to be healthy
	How does it save GHGs to export?
	What is the rock like under it?
	How deep will you dig?
<b>June 1 Public Works, Squamish</b>	Do you own the land for the expansion?
	Do you own the land?
	When did it close? When will the current landfill close?
	How long did it take to close (fill) the closed section)?
	What do you do when the landfill closes?
	How long would the process take?
	What is required?
	What other options are there beside landfill?
	Why is there a leachate pre-treatment system being built?
	Why do you need a leachate plant?
	Where is the wood diversion business going?
	Who owns the land?
	Where does the leachate go?
	What's the volume for the expansion?
	How are you going to facilitate or make better the transfer station area?
<b>June 3, Landfill, Squamish</b>	What triggered the MOECCS to be involved in this? How supportive is the MOECCS for this?
	Can we do waste to energy?
	Can you support closed economy with the expansion?
	How much will it cost?
	Who owns the land?
	Will there be gas collection?
	What will happen if there is no expansion?
	What about dog poo? Can you separate and recycle it?

	What happens if the province says no?
	What is the life span of the expansion?
	Berm on the north -what happens if the river floods -will the berm deflect the water to the north?
	Fergies and Squamish Nation land -could there be flooding?
	Why not waste to energy? Germany does it
	How long will it last?
<b>June 5, Britannia Beach</b>	Source separation for institutional/commercial/industrial should be available and mandatory
	Share more information on textile recycling
	Please do not do unmanned centralized garbage
	Please expand the entrance so truck-trailer can U-turn and not jackknife multiple times
	Open at 8 am in the summer to 6 pm and 9-5 pm in the winter
	Nice if open all the time
	Offer a contractor discount of 5%
	Have a drop-off for institutional/commercial/industrial in transfer station to keep trucks and trailers out of the landfill
	Could do something with gas
	We need the expansion
<b>June 9, Furry Creek</b>	What is the life span of the project?
	What is leachate and landfill gas?
	Would we have glass collected as part of curbside?
	Is there an environmental impact assessment?
	What about waste export?
	What is your next step?
	What do you do with the gas?
	Is it in the flood plain zone?
	Are there any other options?
	Thanks for being here
	Thunder Bay depot is a good example for how to set it up
	What are you doing with the gas?
	Why wasn't it advertised with the Furry Creek Association?
	Come back and do a social on recycling and organics -no one composts
	Waste to energy technology is improving. Burnaby incinerator burns clean.
	Neighbourhood energy systems should be considered for development in the area
	What are you doing here?
	What happens to the garbage?
	How do you prevent the leachate and impact on the environment?
	What are the options?

	What can I do about the smell of organics?
	What happens when it is all full?
	Why can't you take the glass in the bin?
	Where is the landfill?
	Why can't I have glass pick up at my house?
	Where do dog poo bags go? In the organics or the garbage?
	Should I use a garburator or a compost bin?
<b>Comment Cards</b>	
	Please do an advertisement in the Chief about textile drop off and what happens to it
	Need for easier traffic flow when passing the scale twice when you have multiple streams with a trailer, need a U-turn
	Need recycling materials to be free area -before the scale
	Landfill expansion plans look great. Is there a chance we could get extended hours at GFL Recycling in Squamish back as COVID numbers have come down? 3 pm closure is early and the landfill is far.

## Feedback from June 8<sup>th</sup> Online Information Session

- The Sea to Sky region is growing so fast. The District has a big challenge to meet when it comes to landfill targets. Our focus needs to be on producing less waste overall, as it will be very challenging to meet landfill targets with a growing population.
- Waste export seems particularly problematic as we shouldn't be reliant on large trucks taking our waste long distance away. I have been surprised to learn the long distances that some communities transport their waste in Western Canada.
- The landfill gas collection system is very interesting. This is an innovative way to deal with a harmful substance and I am interested to see what uses the District is able to find for the gas going forward.
- Question: How does recycling and composting fit into the landfill expansion?

## District Website and Let's Talk Squamish project page - comments & questions

### District of Squamish Website: Project Page

Comments
I do not believe that building an adjacent landfill is the answer, it is only going to invite more new residential construction and more complaints from the residents. The property taxes already in Squamish are already unrealistic, which this landfill expansion will only increase the property taxes. I think the District of Squamish should be thinking of the environment and build an incinerator to produce energy.
I personally do not believe that a lateral or an additional vertical expansion is the solution here. A fiscally responsible solution for the long run would be an incinerator, as it would not only decrease the quantity of waste by a considerable amount, but would also provide production of both heat and power, as well as a reduction of pollution. Considering as well that using an incinerator would reduce the methane being released by the Landfill Waste, it is not an option to ignore. Money could also be spent towards additional Depot sites around Squamish, as the two in place are not nearly enough to compensate for the population looking to dispose of recyclables. More depot sites would increase recycling, decrease wait times, and

overall decrease pollution as fewer cars will be idling or driving across town multiple times. If the District would like to move "beyond a landfill," I would suggest not building another landfill.

There is no perfect solution but I can get behind a landfill beside the landfill. It would be good for our community to look after our own waste. Ideally we will have a large recycling area that we can drive safely in and out of rather than what is currently provided. I would like to see more enforcement to both businesses and residents to divert appropriately.

I'd really love to see better use of methane generated from landfills than flaring. Maybe electricity generation, <https://www.epa.gov/lmop/basic-information-about-landfill-gas?>

### Let's Talk Squamish Platform:

Question ( <i>from oldest to most recent</i> )	Response
Where will the exported waste go if such is needed. What will be the fate of specific categories of waste?	A location to export waste has not been determined. There are sites in British Columbia, Washington and Oregon that could potentially receive the exported waste from Squamish. The waste material would go to these sites as "exported garbage." It would include the categories of waste that go into the Squamish Landfill currently, such as residential, multi-family, institutional and industrial (including construction) waste. Recyclables would continue to be separated and managed in a responsible manner.
Should we not also look at another option, the one used extensively in densely populated Western Europe: A regional incineration facility?	<p>A waste-to energy (WTE) facility is not being considered for the time being as short to medium term solution to waste disposal for Squamish. Some of the reasons why are:</p> <p>Timing:</p> <p>We are currently extremely tight on time due to limited lifespan of the current Landfill, and the following would all make the process longer:</p> <ul style="list-style-type: none"> <li>• WTE is not supported in the SWRMP, so to include it now would require a longer and more in-depth consultation period.</li> <li>• Squamish Council passed a motion in the December 15, 2015 Regular Business Meeting that Staff 'recommend changes to the draft SWRMP that eliminate the option for waste incineration (also known as waste to energy) of mixed municipal solid waste'. To rescind this motion would take time and resources.</li> <li>• The timeframe required to implement this would be ~6 years, with additional time for land acquisition.</li> </ul> <p>Expense:</p> <ul style="list-style-type: none"> <li>• Our 2019 analysis of WTE indicates it is not financially feasible at the current disposal rates, even at a regional level.</li> </ul> <p>Provincial Approvals:</p> <ul style="list-style-type: none"> <li>• We are currently at a solid waste disposal rate of around 560kg/capita/year, and for the Ministry to</li> </ul>

	<p>approve a WTE, we need measurable interim targets set and met, to get the community to 350 kg/capita/year.</p> <p>Regional waste to energy will be considered during the SLRD's Update to the Solid Waste &amp; Resource Management Plan. If you want to be a part of that conversation and process (starting in 2024), please contact <a href="mailto:utilities@slrd.bc.ca">utilities@slrd.bc.ca</a> or call (604)894-6371 ext. 236.</p>
<p>Thank you for your quick answer regarding my question about a regional incineration facility. I am a bit confused about such a project not being financially feasible because of current disposal rates: You state under the heading 'Provincial Approvals' that the current solid waste disposal rate of Squamish is around 560kg/capita/year, but that for the Ministry to approve a WTE facility, the community has to get to 350kg/capita/year. Would we, according to these numbers, not already vastly exceed that provincial requirement? Furthermore timing: How do we expect to get to 'net zero' by 2030, when we have difficulty even to accommodate a relatively simple solid waste management strategy? This last one is a rhetorical question, and I am not expecting you to have an answer for it.</p>	<p>Thanks for following up with this question. The community of Squamish is working hard to increase waste diversion, meaning that as a community we put less into our landfill. Currently, each resident produces on average 560 kg of waste per year. This is an improvement over past years, however there is more work to do. To meet Provincial requirements for a waste-to-energy (WTE) facility, we must continue to reduce the amount of waste produced per resident down to 350kg per year. We need to reduce our waste production prior to approval of a WTE facility so that we don't have to rely on continued waste production to ensure that a WTE facility remains viable.</p> <p>The District's long-term goals are ultimately waste reduction and supporting a circular economy (directed in part by the Community Climate Action Plan (CCAP)(<a href="#">External link</a>) and the Zero Waste Strategy(<a href="#">External link</a>)), while responsibly managing the residual waste. As mentioned, a WTE facility has been assessed and will continue to be considered as a long-term waste management solution. A regional WTE facility will be considered during the Squamish-Lillooet Regional District's update to the Solid Waste &amp; Resource Management Plan. If you want to be a part of that conversation and process (starting in 2024), please contact <a href="mailto:utilities@slrd.bc.ca">utilities@slrd.bc.ca</a>(<a href="#">External link</a>) or call (604)894-6371 ext. 236.</p> <p>Even with a WTE facility, a lateral landfill expansion would still be required to handle the end product that results from the WTE process. While WTE facilities are common in places such as Europe, it is important to remember that the context is different in Canada. We don't face the same space constraints, and our energy prices are cheaper, which must be considered when evaluating the viability of a WTE facility.</p> <p>In terms of our net zero goals, the District's Community Climate Action Plan (CCAP(<a href="#">External link</a>)) is the roadmap to achieve this. In line with the CCAP, as a community we are aiming to reduce our emissions by at least 45% from 2010 levels by 2030, which will have us on track to achieve net-zero emissions by 2050. You can see the progress the District has made towards these goals since adopting the</p>

	CCAP here: <a href="https://squamish.ca/climateaction/see-our-progress-on-climate-action/#-b">https://squamish.ca/climateaction/see-our-progress-on-climate-action/#-b</a>
Has there been any consideration to the affect that an expansion of the landfill towards the Cheekye river may have on potential debris torrents? I know some of the geotech torrent models predicted material escaping at "the Dogleg" the 90 degree bend in the river by the dump. Would building a 400m wide berm towards the river prevent material evulsion and direct flows towards the Cheekye and IR11 communities?	<p>Thank you for this question. We apologize for the delay in the response. The District has retained BGC Engineering to complete a review of debris flow risk in relation to the proposed landfill expansion. BGC has developed the existing Cheekye Fan debris flow model and are knowledgeable subject matter experts. They will review the impacts of landfill expansion to ensure there is no appreciable transfer of risk that would result from the expansion and to ensure the landfill expansion is safe from both a life safety and an environmental perspective. The review is in its initial stages and the District will share further information once available.</p>
Why are we not pursuing any waste to energy options?	<p>Thank you, this is a great question. We apologize for the delay in responding, responses were held up due to staff being out of the office. A waste-to-energy (WTE) facility is not being considered for as a short to medium term solution for waste disposal in Squamish, and some of the reasons why are:</p> <p>Expense:</p> <ul style="list-style-type: none"> <li>• Our 2019 analysis of WTE indicates it is not financially feasible at the current disposal rates, even at a regional level.</li> </ul> <p>Provincial Approvals:</p> <ul style="list-style-type: none"> <li>• Squamish is currently at a solid waste disposal rate of around 560kg/capita/year. For the Ministry to approve a WTE facility, we need measurable interim targets set and met, to get the community to 350 kg/capita/year.</li> </ul> <p>Timing:</p> <ul style="list-style-type: none"> <li>• We are currently extremely tight on time due to the limited lifespan of the current Landfill, and the following would all make the process longer:</li> <li>• WTE is not supported in the Solid Waste and Resource Management Plan (SWRMP), so to include it now would require a longer and more in-depth consultation period.</li> <li>• Squamish Council passed a motion at the December 15, 2015 Regular Business Meeting that Staff 'recommend changes to the draft SWRMP that eliminate the option for waste incineration (also known as waste to energy) of mixed municipal solid waste'. To rescind this motion would take time and resources.</li> <li>• The timeframe required to implement this would be ~6 years, with additional time for land acquisition.</li> </ul> <p>If you would like to be a part of the Squamish-Lillooet Regional District's update to the Solid Waste &amp; Resource Management Plan, which addresses everything to do with waste management, diversion and reduction in the region and should begin in 2024, please contact <a href="mailto:utilities@slrd.bc.ca">utilities@slrd.bc.ca</a>(External link) or call (604)894-6371 ext. 236.</p>



<p>I'm a waste management and recycling specialist and the only question I have is: Why? We can expand and expand forever - there is a lot of space in Canada - but eventually we just make waste mountains out of valleys. For a small municipality like Squamish, incineration and energetic use is the only viable and sustainable option. I have mentioned this multiple times at the district. Canada is 30 years behind European counterparts and landfill at this rate is no sustainable. We can talk Zero waste (or as call it 'greenwashing') all the time, but the minuscule solutions are not bringing the results needed. Squamish, and every other municipality and city in this country, needs serious sorting and incineration facilities.</p>	<p>Thank you for your question. We apologize for the delayed response, it is due to key staff being out of the office. The Lateral Expansion of the Squamish Landfill is a medium-term solution for the waste management of our community. An analysis was conducted in 2019 about the viability and cost of a waste-to-energy (WTE) facility for Squamish, and while the findings concluded that a WTE facility is not feasible at this point in time, Staff recommend assessing the viability of new WTE technologies on an ongoing basis as they become proven in other jurisdictions with similar waste compositions and working with the Squamish-Lillooet Regional District to contemplate WTE as well as material recovery in the next Solid Waste &amp; Resource Management Plan update (see below for further information on how to be a part of that discussion).</p> <p>As to why a WTE facility is not being considered for as a short to medium term solution for waste disposal in Squamish, some of the reasons why are:</p> <p>Expense:</p> <ul style="list-style-type: none"> <li>• Our 2019 analysis of WTE indicates it is not financially feasible at the current disposal rates, even at a regional level.</li> </ul> <p>Provincial Approvals:</p> <ul style="list-style-type: none"> <li>• Squamish is currently at a solid waste disposal rate of around 560kg/capita/year. For the Ministry to approve a WTE facility, we need measurable interim targets set and met, to get the community to 350 kg/capita/year.</li> </ul> <p>Timing:</p> <ul style="list-style-type: none"> <li>• We are currently extremely tight on time due to the limited lifespan of the current Landfill, and the following would all make the process longer:</li> <li>• WTE is not supported in the Solid Waste and Resource Management Plan (SWRMP), so to include it now would require a longer and more in-depth consultation period.</li> <li>• Squamish Council passed a motion at the December 15, 2015 Regular Business Meeting that Staff 'recommend changes to the draft SWRMP that eliminate the option for waste incineration (also known as waste to energy) of mixed municipal solid waste'. To rescind this motion would take time and resources.</li> <li>• The timeframe required to implement this would be ~6 years, with additional time for land acquisition.</li> </ul> <p>If you want to be a part of the Squamish-Lillooet Regional District's update to the Solid Waste &amp; Resource Management Plan (starting in 2024), please contact <a href="mailto:utilities@slrd.bc.ca">utilities@slrd.bc.ca</a>(External link) or call (604)894-6371 ext. 236.</p>
<p>Thanks again for answering my follow-up question so quickly. If I interpret your answer correctly, Squamish has to reduce</p>	<p>Thank you for the follow-up. As mentioned in the other response, we apologize for the delay in responding. Yes, the province has set the target of 350 kg/capita for their</p>

<p>its current rate of 560kg/capita of waste per year to 350kg/capita to obtain provincial approval for a WTE facility, not because it is not financially feasible at the current disposal rates, which appear to be sufficient when reading your answer under 'Expense' to my first question, but because of what must be some arbitrary provincial target, namely the 350kg/capita/year. You state that this is "so that we don't have to rely on continued waste production to ensure that a WTE facility remains viable". Since your answer suggests that this number must be above the 350kg per year, it then begs the question of how many kilograms of waste production are needed to make a WTE facility financially viable? That, to me, is the key question here. You raised another question by your comment about lateral landfill expansion, even with a WTE facility, to handle the end product from the process. According to what I know, waste processed by efficient incinerator facilities produce highly concentrated residue, but which is also to some extent toxic, so that it has to be disposed/stored in a proper manner. That would certainly have to exclude 'sprinkling' on top of a lateral landfill, wouldn't it? Lastly, your reference to space constraints and higher energy prices in Europe as prime reasons for WTE facilities being common in Europe: It seems to me that greater abundance of space in Canada should not be a license to treat that space with any less reference. As to energy pricing, I suppose you refer to the price of net surplus energy produced by the WTE facility, but isn't that a 'bonus', the main purpose of the whole operation being the elimination of as much solid waste as possible?</p>	<p>approvals for a WTE facility, and the District of Squamish is currently at 507 kg per person (2021).</p> <p>With regards to your question about the kg/capita/year needed to make a WTE feasible, we do not have that level of information. The 2019 analysis that was conducted was based on two production scenarios for waste tonnage (Squamish-only and the entire SLRD region), using the status quo waste disposal rate, as well as a high-diversion waste projection. The primary purpose of completing the waste projections was to determine a design tonnage for the WTE facility and provide information on proven WTE technologies that would be suitable for the tonnages identified in these scenarios. While expense is a key component, time is a powerful constraint to the pursuit of a WTE facility at this point in time, as the current landfill is on-track to reach capacity in 2028/2029, and due to the time associated with the land acquisition and regulatory requirements (provincial and regional), it is not feasible to pursue WTE as a solution for the current situation.</p> <p>The District recognizes that technology in this area is continually evolving and Staff have recommended assessing the viability of new WTE technologies on an ongoing basis as they become proven in other jurisdictions with similar waste compositions and working with the Squamish-Lillooet Regional District to contemplate WTE as well as material recovery in the next Solid Waste &amp; Resource Management Plan update (see below for further information on how to be a part of that discussion).</p> <p>Additionally, as you identified, while WTE significantly reduces the volume of residuals requiring disposal, it does not eliminate the need for a landfill. Therefore, if a regional WTE was to be established, the Squamish Lateral Landfill Expansion would be a possible location to dispose of the final product (with the proper provincial approvals in place). The lateral expansion of the Squamish Landfill is a medium-term solution for waste management in the community.</p> <p>If you want to be a part of the Squamish-Lillooet Regional District's update to the Solid Waste &amp; Resource Management Plan (starting in 2024), please contact <a href="mailto:utilities@slrd.bc.ca">utilities@slrd.bc.ca</a> (External link) or call (604)894-6371 ext. 236.</p>
<p>I had another follow-up question, or rather a request for further clarification after the answer you provided to my question below. Since I have not heard from you, I must assume that my message did not reach you, so I try again: We know that solid waste production is 560kg/capita/year in Squamish, but that the Province sets a target of</p>	<p>With regards to your question about the kg/capita/year needed to make a WTE feasible, we do not have that level of information. The 2019 analysis that was conducted was based on two production scenarios for waste tonnage (Squamish-only and the entire SLRD region), using the status quo waste disposal rate, as well as a high-diversion waste projection. The primary purpose of completing the waste projections was to determine a design tonnage for the WTE facility and provide information on proven WTE</p>

<p>350kg/capita/year before giving approval for an incinerator (a Waste-to-Energy facility). Whatever the reason for this requirement may be, it does not answer the key question of what tonnage/kg is required to make a WTE financially viable. You also mention higher energy prices in Europe giving a boost to the viability of WTEs there. I assume this relates to net output of energy from the facility, and which would be competitive as an alternate source of energy in a high price environment. There is, of course, also the fact that lower overall energy prices lower the input costs, never mind attempting to market the energy output of the facility, and is a WTE facility not built foremost with the goal to eliminate/reduce waste to the smallest volume possible rather than as a source for energy production? Furthermore, you state in your answer that lateral landfill expansion would still be needed to deal with waster residue after incineration. What about toxic ash left after the process? Surely, our lateral landfill should not be the place to put that?</p>	<p>technologies that would suitable for the tonnages identified in these scenarios.</p> <p>As to your question about the goal of a WTE facility, yes you are correct about the ultimate goal being to eliminate or reduce waste to the smallest volume. Energy production is a by-product output that we would consider in the analysis, but is not the main function of the facility.</p> <p>With regards to the question about the management of the ash that is produced by a WTE, and ultimately requires proper disposal. Yes, while WTE significantly reduces the volume of residuals requiring disposal, it does not eliminate the need for a landfill, hence a small lateral expansion of the Squamish Landfill would still be required if the District was to pursue a WTE. If a regional WTE was to be established, the Squamish Lateral Landfill Expansion would be a possible location to dispose of the final product (with the proper provincial approvals in place).</p>
<p>Who are the consultants for this project?</p>	<p>Hi, Thank you for your question. The Lateral Expansion of the Squamish Landfill has many different project components, and consultants vary depending on the objective. To-date, Sperling Hansen &amp; Associates have been retained for the Preliminary Design (2019) and the Concept Design (2022/3), Ecoinspire Planning Services has been retained to write up the Engagement Summary for the focused amendment to the Squamish-Lillooet Regional District's Solid Waste &amp; Resource Management Plan (2022), and BGC Engineering to complete a review of debris flow risk in relation to the proposed landfill expansion (2022).</p> <p>As well, ECOLOGIC Consultants have been retained to conduct the Archaeological Impact Assessment.</p>

### Direct emails to DoS or SLRD

Q. I am looking for more information on the proposed design for the landfill expansion area. Unfortunately, it looks like I missed the public information meetings sessions. Will the elevation for the expansion area and the area for leachate pre-treatment need to be lowered to create a basin for the liner? Please let me know where I can more information on the plan.

A. Thanks for reaching out. I'm happy to walk you through this information.

Yes, we will be excavating where the lined landfill will go, however, note that the depth of the excavation is regulated by the Province. As we will be elevating the transfer station height (below the landfill expansion), the Leachate pre-treatment ponds (aeration and sedimentation ponds) probably won't be excavated too much, more so, we will be building up around them.

I'm more than happy to answer any more questions. You can find a video of me going over the lateral expansion here: <https://squamish.wistia.com/medias/8w91b8r0bn>

You can also leave comments/questions here: <https://letstalksquamish.ca/landfill-lateral-expansion>.

## Letters from the Squamish Airport Executive



July 18, 2022

District of Squamish  
Squamish Municipal Airport- Don Patrick Field CYSE  
46001 Government Road,  
Squamish BC

Attention: Shannon White, Integrated Solid Waste Specialist

**RE: Airport Executive Letter: Squamish Lateral Landfill Expansion**

Dear Ms. White,

Per our recent discussions, it is understood that the District of Squamish is currently in the process of the planning and assessment work in support of a proposed lateral expansion to the Squamish Landfill. This is understood to require an amendment to the Squamish-Lillooet Regional District Solid Waste & Resource Management Plan. As part of this process, you have requested our comments as the Airport Executive with respect to potential impacts to the Squamish Municipal Airport – Don Patrick Field (the “Airport”).

Based on information made available to-date, it is understood that the direction of the expansion will be to the east of the current facility, that the future use of the landfill will not differ significantly from status quo operations, and that the active face of the landfill will not be increased following the expansion.

Transport Canada recognizes that birds pose a unique hazard to the safety of aircraft in flight, with the potential to result in structural and/or engine damage or failure as a result of a collision. This hazard is greatest when aircraft are operating in the vicinity of aerodromes due to: 1) the concentration of aircraft activity; and 2) the location of this activity close to the ground, where the majority of birds are present. Transport Canada further recognizes in TP1247 – Land Use in the Vicinity of Aerodromes (9<sup>th</sup> Edition) that “...*aircraft involved in takeoffs or landings are at low altitudes and in a critical phase of flight where any disruptions to the operation could be catastrophic.*”

The Airport is located approximately 1.2 km southwest of the Squamish Landfill. As shown in Figure 1, the Runway 15 left-hand downwind leg overflies the Squamish Landfill, with aircraft passing over the landfill while approximately abeam to the Runway 15 threshold. Aircraft flying the Runway 15 left-hand downwind leg operate at or around 1,000 ft. Above Aerodrome Elevation (1,171 ft. Above Sea Level), or approximately 800 ft. Above Ground Level at the Squamish Landfill location.

**Figure 1 - Proposed landfill expansion area (purple) and Runway 15 left-hand downwind leg (red)**



In TP1247, Transport Canada defines Primary Hazard Zones as being the airspace in which aircraft are at or below altitudes of 1,500 ft. Above Ground Level. These are stated to be the altitudes most populated by birds where collisions have the potential to result in the greatest damage. Based on the land use guidance provided in TP1247, Transport Canada does not identify putrescible waste landfills, dry waste landfills, enclosed waste transfer facilities, or wet / dry recycling facilities as recommended acceptable land uses in the Primary Hazard Zone. However, TP1247 also notes that land use acceptability is site sensitive and is determined through detailed assessments of each aerodrome and its surroundings, and that risks associated with many land uses can be reduced through appropriate mitigation and monitoring.

District Staff have completed research to determine whether any bird hazards result from the current operation of the landfill. Specifically, District Staff and HM Aero Aviation Consulting:

- Reviewed the Civil Aviation Daily Occurrence Reporting System database for the period of January 1, 2012 to July 7, 2022. No records were submitted for bird strikes at the Airport during this period;
- Contacted Transport Canada on July 8, 2022 to see if any records are available through the Bird Strike Information System. Transport Canada provided notice on July 13, 2022 that there are no bird strike records in its database for the Airport; and
- Contacted all five aviation tenants based at the Airport (Black Tusk Helicopter, Blackcomb Aviation, Sea to Sky Air, Glacier Air, and Squamish Flying Club) to collect their perspectives on bird hazards in the vicinity of Squamish Landfill. Comments were provided by Sea to Sky Air; from their experience, birds are encountered in the vicinity of the Squamish Landfill on a daily basis – however, this operator has never experienced a bird strike. In their opinion, while the landfill constitutes a bird hazard, the hazard is not more severe than would otherwise be expected when operating aircraft near the confluence of multiple rivers.

Based on our understanding that the future operation of the Squamish Landfill will be similar to the status quo and that the active face of the facility will not be expanded, we do not anticipate significant new bird hazard risks to arise in the future. However:

1. We recommend the use of bird deterrence measures within the future planning and operation of the Squamish Landfill; and
2. We reserve the right to request mitigation measures in the future if the current or expanded Squamish Landfill is found to result in bird hazards that endanger the safety of aircraft operations at / in the vicinity of the Airport.

The Canada Flight Supplement entry for the Airport currently includes the following note under its Caution section: *"Wildlife in vic."* To support the District's proactive approach to the administration of the Airport, we intend to amend the cautionary note as follows: *"Wildlife may be on or in vic of rwy. Landfill 0.5NM E of Thld 15, possible bird activity in vic of A/D."*

Thank you for the opportunity to provide our comments on behalf of the Airport with respect to the proposed lateral expansion of the Squamish Landfill. If you have any questions about our submission, please do not hesitate to contact the undersigned.

Sincerely,



Neil Plumb  
Manager of Real Estate





August 9, 2022

District of Squamish  
Squamish Municipal Airport- Don Patrick Field CYSE  
46001 Government Road,  
Squamish BC

Attention: Shannon White, Integrated Solid Waste Specialist • Engineering

**RE: Airport Executive Letter: Squamish Lateral Landfill Expansion (Supplementary Remarks)**

Dear Ms. White,

Per our recent discussions, it is understood that the District of Squamish is currently in the process of the planning and assessment work in support of a proposed lateral expansion to the Squamish Landfill, including an amendment to the Squamish-Lillooet Regional District Solid Waste & Resource Management Plan. As part of this process, we provided our comments as the Airport Executive on July 18, 2022 with respect to potential impacts to the Squamish Municipal Airport – Don Patrick Field (the “Airport”). Based on additional information made available after the submission of our previous correspondence, we would like to provide the following additional commentary.

Prior to our July 18, 2022 letter, comments were received from the Operations Manager of Sea to Sky Air. Additional comments were received from the President of the Squamish Flying Club (July 19, 2022) and the President of Sea to Sky Air (July 25, 2022). Based on the comments of all three individuals:

- Birds are encountered in the vicinity of the Squamish Landfill on a regular basis by Sea to Sky Air and the Squamish Flying Club;
- Neither Sea to Sky Air nor the Squamish Flying Club have recorded a bird strike in the vicinity of the Squamish Landfill – however, near misses have occurred; and
- While the Squamish Landfill results in bird hazards to aircraft, these hazards have been manageable and have not resulted in negative consequences to-date.

Based on our understanding that the future operation of the Squamish Landfill will be similar to the status quo and that the active face of the facility will not be expanded, we do not anticipate significant new bird hazard risks to arise in the future. Per our July 18, 2022 submission, we continue to recommend the use of bird deterrence measures within the future planning and operation of the Squamish Landfill, and we reserve the right to request mitigation measures in the future if the Squamish Landfill is found to result in bird hazards that endanger the safety of aircraft operations.

Please note that on August 4, 2022, the District of Squamish submitted its requested Canada Flight Supplement updates to NAV CANADA per the next steps identified in our July 18, 2022 submission. Specifically, we have requested that the Squamish Landfill be identified in the VFR Terminal Procedures Chart and that the following cautionary note be added: *Wildlife may be on or in vic of rwy. Landfill 0.5NM E of Thld 15, possible bird activity in vic of A/D.*

Thank you for the opportunity to provide our comments on behalf of the Airport with respect to the proposed lateral expansion of the Squamish Landfill. If you have any questions about our submission, please do not hesitate to contact the undersigned.

Sincerely,



Neil Plumb  
Manager of Real Estate

Email from the Resort Municipality of Whistler

**Sent:** April 14, 2022 8:37 AM

**Subject:** \*\*\* External \*\*\* RE: SWRMP Focused Amendment - Squamish Landfill

Hi Marie-Lou,

We support the District of Squamish's initiative to request an amend in the wording of the SLRD SWRMP as a focus amendment, to pursue the feasibility of either a Squamish lateral landfill expansion or Transfer Station to export waste out of region.

Thank you,

Andrew

Andrew Tucker

**RESORT MUNICIPALITY OF WHISTLER**

## Out of Scope Feedback

Several responders provided feedback that was broader than the focused amendment. This feedback, while not directly relevant to the amendment, will be considered for the future SWRMP update and the update of the DoS Zero Waste Strategy. It is shown below with the number of times it was mentioned in brackets.

- Source separation for ICI should be available and mandatory (1)
- Enforcement needed for businesses and residents to divert appropriately (1)
- No one is composting (1)
- Does Squamish's material get recycled? (1)
- What about dog poo? Can it be separated and composted? Which bin should it go in? (2)
- Is a garburator or composting better? (1)
- Would glass be collected at curbside? Why is it not currently? (3)
- Please share more information on textile recycling (2)
- Please avoid unstaffed centralized garbage drop off (1)
- Can there be a contractor discount for waste (1)

## APPENDIX J: ENDNOTES

---

<sup>1</sup> Minutes SLRD December 15, 2021 Board meeting

<https://slrd.civicweb.net/filepro/documents/133397/?preview=143892>

<sup>2</sup> PMAC Terms of Reference

[https://www.slrd.bc.ca/sites/default/files/pdfs/UES/PMAC/2022\\_TOR\\_PMAC\\_Reviewed.pdf](https://www.slrd.bc.ca/sites/default/files/pdfs/UES/PMAC/2022_TOR_PMAC_Reviewed.pdf)

<sup>3</sup> PMAC September 29, 2021 Minutes

[https://www.slrd.bc.ca/sites/default/files/pdfs/UES/PMAC/2022\\_TOR\\_PMAC\\_Reviewed.pdf](https://www.slrd.bc.ca/sites/default/files/pdfs/UES/PMAC/2022_TOR_PMAC_Reviewed.pdf)

<sup>4</sup> PMAC January 19, 2022 Minutes

[https://www.slrd.bc.ca/sites/default/files/pdfs/UES/PMAC/2022\\_TOR\\_PMAC\\_Reviewed.pdf](https://www.slrd.bc.ca/sites/default/files/pdfs/UES/PMAC/2022_TOR_PMAC_Reviewed.pdf)

<sup>5</sup> PMAC Agenda and Minutes June 27, 2022

<https://slrd.civicweb.net/Portal/MeetingInformation.aspx?Org=Cal&Id=1265>

<sup>6</sup> District of Squamish June 8<sup>th</sup> Virtual Open House Recording

<https://squamish.wistia.com/medias/8w91b8r0bn>

<sup>7</sup> District of Squamish Council Report April 12, 2022

<https://squamish.civicweb.net/FileStorage/FD2FE50C71EA4F33AAB1EBC5534A0D1A-RTC%20-%20Lateral%20Landfill%20Expansion%20Project%20Update%20-%20.pdf>

<sup>8</sup> District of Squamish Council Meeting Minutes April 12, 2022

<https://squamish.civicweb.net/filepro/documents/?expanded=9879,9883,212118,9882&preview=215516>

<sup>9</sup> District of Squamish Council Meeting Recording April 12, 2022

<https://squamish.ca/yourgovernment/meetings/video-library/2022/april/>

<sup>10</sup> Squamish Chief Article May 4, 2022 <https://www.squamishchief.com/local-news/district-of-squamish-eyes-2029-for-completion-of-lateral-landfill-expansion-5332404>

<sup>11</sup> Let's Talk Squamish Lateral Landfill Expansion webpage <https://letstalksquamish.ca/landfill-lateral-expansion>

<sup>12</sup> District of Squamish Lateral Landfill Expansion webpage <https://squamish.ca/yourgovernment/projects-and-initiatives/landfill-lateral-expansion/>

<sup>13</sup> Let's Talk Squamish Lateral Landfill Expansion webpage <https://letstalksquamish.ca/landfill-lateral-expansion>

<sup>14</sup> District of Squamish Lateral Landfill Expansion webpage <https://squamish.ca/yourgovernment/projects-and-initiatives/landfill-lateral-expansion/>

<sup>15</sup> SLRD SWRMP Focus Amendment webpage <https://www.slrd.bc.ca/inside-slrd/notices/other-notices/solid-waste-resource-management-plan-focus-amendment-%E2%80%93-public-engagement-notice>

<sup>16</sup> District of Squamish Enews Archives <https://squamish.ca/yourgovernment/enews/>

<sup>17</sup> Let's Talk Squamish Lateral Landfill Expansion webpage <https://letstalksquamish.ca/landfill-lateral-expansion>