

Steps to keeping bees in Squamish



STEP 1 Before starting the practice of bee keeping, it is important to read, understand and comply with the municipal and federal regulations that govern bee keeping.

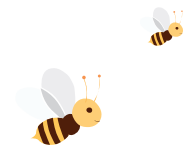
The District of Squamish Animal Control Bylaw contains the regulations for keeping bees.

Read the apiculture information on the Ministry of Agriculture website: www2.gov.bc.ca/apiculture

STEP 2 Register the beehive(s) with the Ministry of Agriculture: forms.gov.bc.ca/industry/beekeeper-apiary-registration

STEP 3 Research and understand what the best practices are for bee keeping.

To request a beehive inspection, please contact the Ministry of Agriculture. Contact details are at www2.gov.bc.ca/apiculture under *Apiculture staff, inspections and lab services*.



Registration

Must be registered with the apiculture registration system for British Columbia, coordinated by the BC Ministry of Agriculture (BCMA). Under the authority of the Provincial Bee Act, a person must not keep Bees or possess Beehive equipment unless the person is registered.

Allowable zones

All, but must be a resident on the property and be able to comply with all regulatory provisions with respect to the keeping of bees.

Permitted number of hives

Keep no more than:

- Two (2) Beehives on any parcel of land under 929 square metres (10,000 square feet) in size despite the number of dwelling units permissible on that parcel;

- Four (4) Beehives on any parcel of land over 929 square metres (10,000 square feet) in size and under 1394 square metres (15,000 square metres) in size despite the number of dwelling units permissible on that parcel;

- Six (6) Beehives on any parcel of land over 1,394 square metres (15,000 square feet) in size despite the number of dwelling units permissible on that parcel.

Siting restrictions

Back yards only with a continuous fence that is 1.8 metres in height to ensure the appropriate flight path of bees; situated in accordance with the accessory building setbacks identified in the Zoning Bylaw; and in such a way that reasonably prevents access by wildlife.

Electric fencing requirements

For complete electric fencing requirements, please visit squamish.ca/bees

Preventing nuisances

Maintain Bees in a condition that reasonably prevents swarming and aggressive behaviour; must take immediate action to end swarming or aggressive behaviour; provide sufficient water to prevent Bees from seeking water on adjacent parcels of land.



Bears are attracted to honey and to bee larvae. In order to prevent human-wildlife conflict, beehives must be fully enclosed by an electric fence as per the District of Squamish Zoning Bylaw.

Additional information



Provincial Apiculturist

Paul van Westendorp

Paul.vanWestendorp@gov.bc.ca

Report a bee swarm

Bee swarms can occur in June to July and are perfectly normal occurrences. A swarm is when the Queen leaves the hive, along with approximately half of the bees, to start another colony elsewhere. While honey bee swarms are not dangerous, they can create a situation that many people are not comfortable with or knowledgeable about. There are some local resources within the community who are happy to assist you with any questions or concerns and who can lend a hand should your bees swarm:

Colin Bates

604.614.5114

colin.bates@questu.ca

Todd Griffiths

604.848.8082

todd.c.griffiths@gmail.com

Zoning Bylaw

For additional information about the Zoning Bylaw, please contact the Planning Department at 604.815.5002
planning@squamish.ca

Regulations

Animal Control Bylaw 2124, 2009

Zoning Bylaw 2200, 2011



District of Squamish

37955 Second Avenue
Squamish, BC V8B 0A3
604.892.5217

Hours of Operation

Monday–Friday
8:30 a.m. to 5:00 p.m.

For more information:
squamish.ca/bees

For all wildlife sightings and encounters:

RAPP
**Report All Poachers
and Polluters**
Conservation Officer 24 Hour Hotline
1-877-952-RAPP (7277)
cell: #7277

BRITISH COLUMBIA rapp.bc.ca Conservation Officer Service

Beekeeping in Bear Country



SQUAMISH