

APPENDIX E

Maps

Brennan Park Precinct

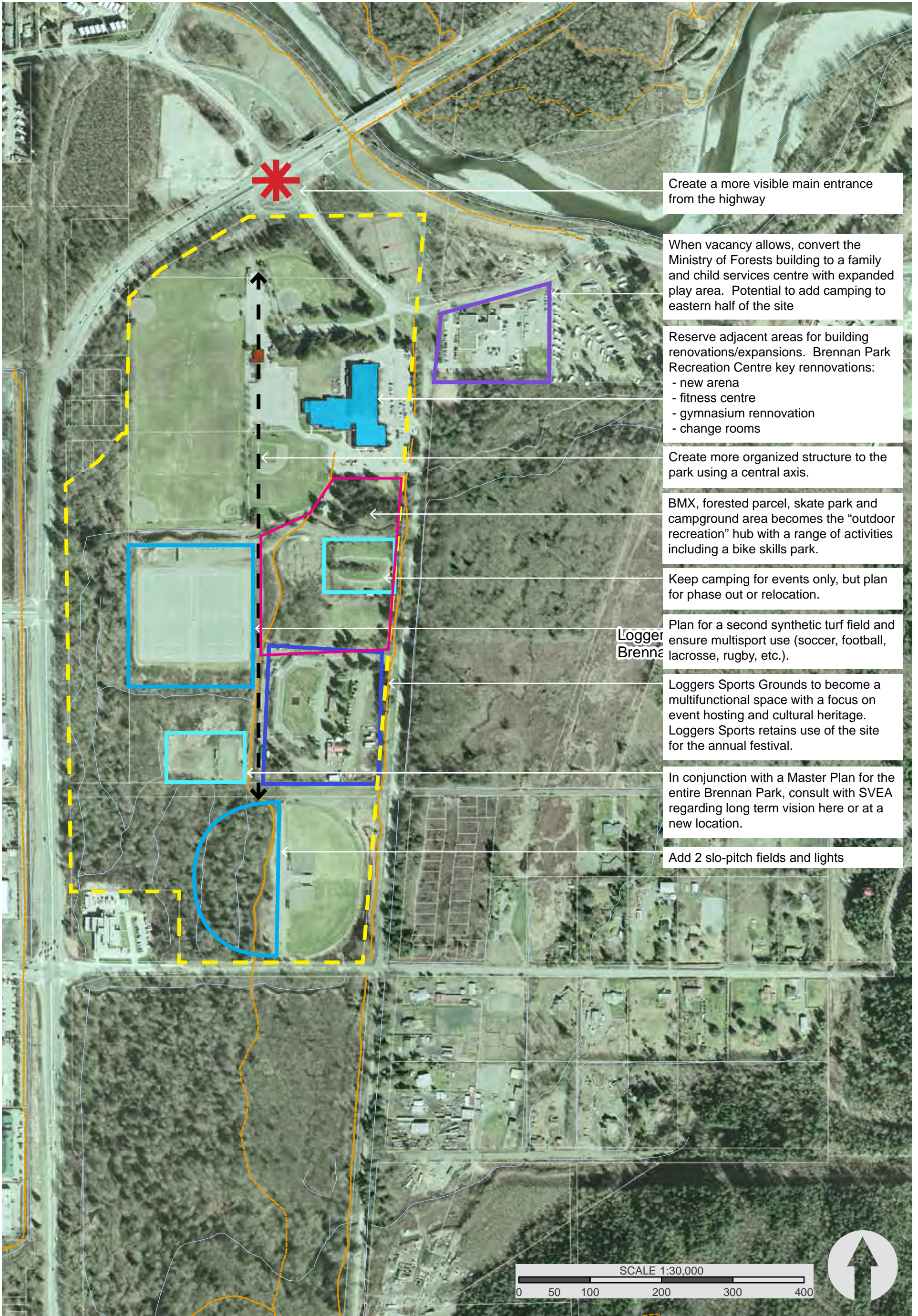
Parks, Trails and Recreation Facilities Overview

Service Areas for Parks

Playground Service Area Analysis

Potential Dog Parks

Waterfront Access and Dikes



Create a more visible main entrance from the highway

When vacancy allows, convert the Ministry of Forests building to a family and child services centre with expanded play area. Potential to add camping to eastern half of the site

Reserve adjacent areas for building renovations/expansions. Brennan Park Recreation Centre key renovations:
 - new arena
 - fitness centre
 - gymnasium renovation
 - change rooms

Create more organized structure to the park using a central axis.

BMX, forested parcel, skate park and campground area becomes the "outdoor recreation" hub with a range of activities including a bike skills park.

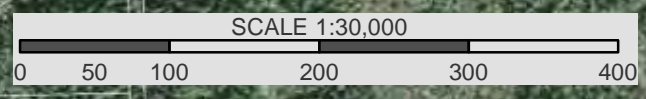
Keep camping for events only, but plan for phase out or relocation.

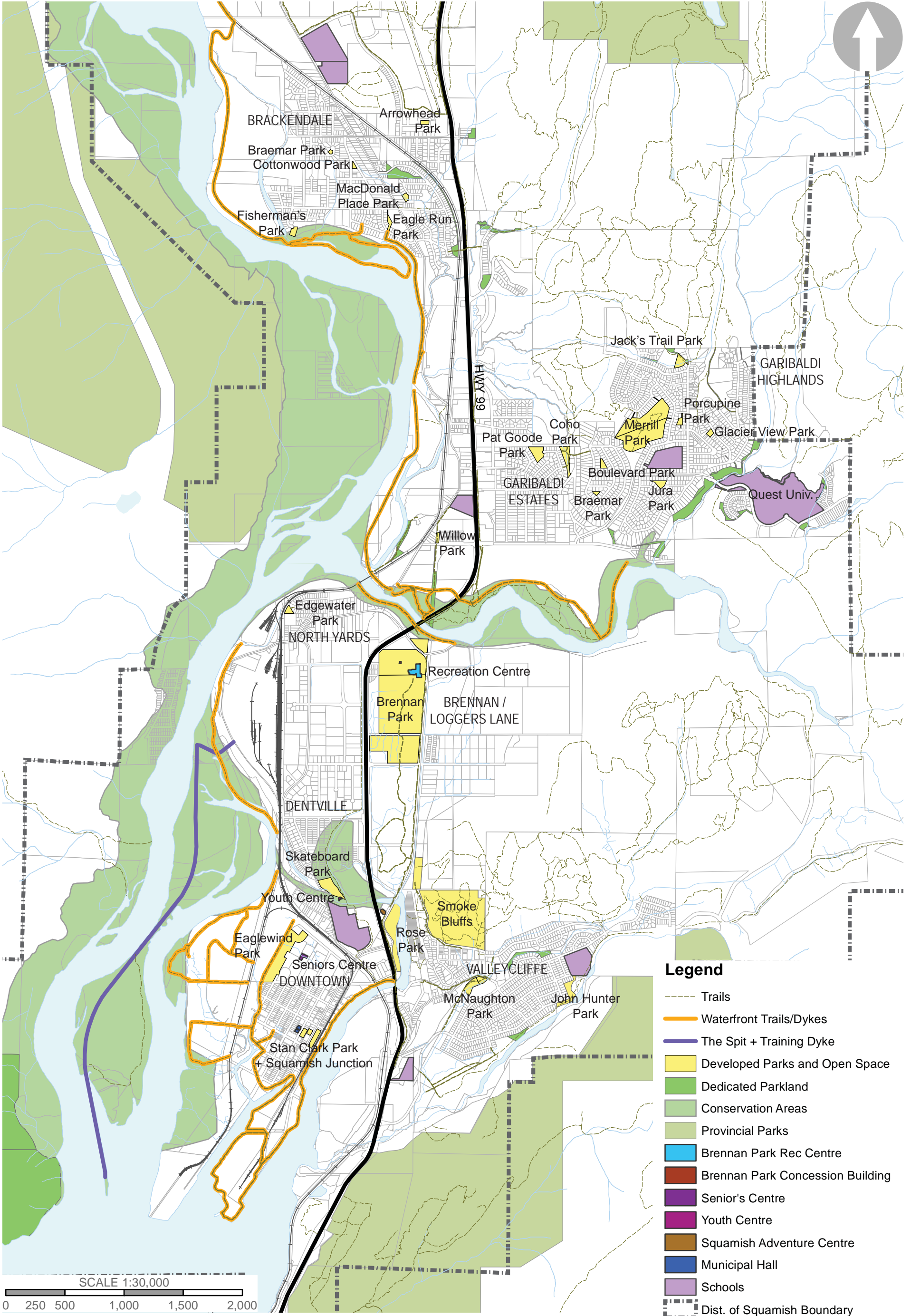
Plan for a second synthetic turf field and ensure multisport use (soccer, football, lacrosse, rugby, etc.).

Loggers Sports Grounds to become a multifunctional space with a focus on event hosting and cultural heritage. Loggers Sports retains use of the site for the annual festival.

In conjunction with a Master Plan for the entire Brennan Park, consult with SVEA regarding long term vision here or at a new location.

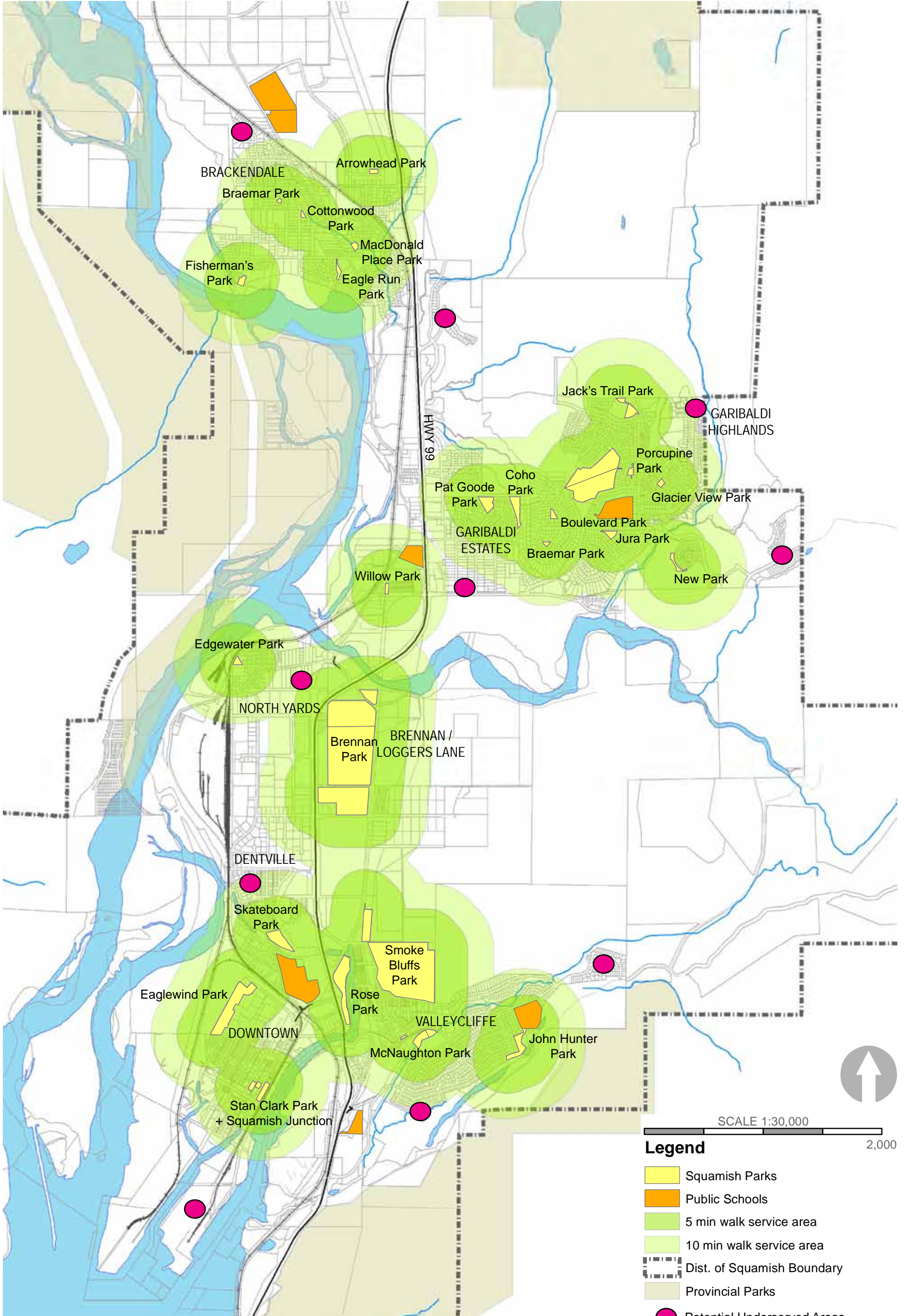
Add 2 slo-pitch fields and lights

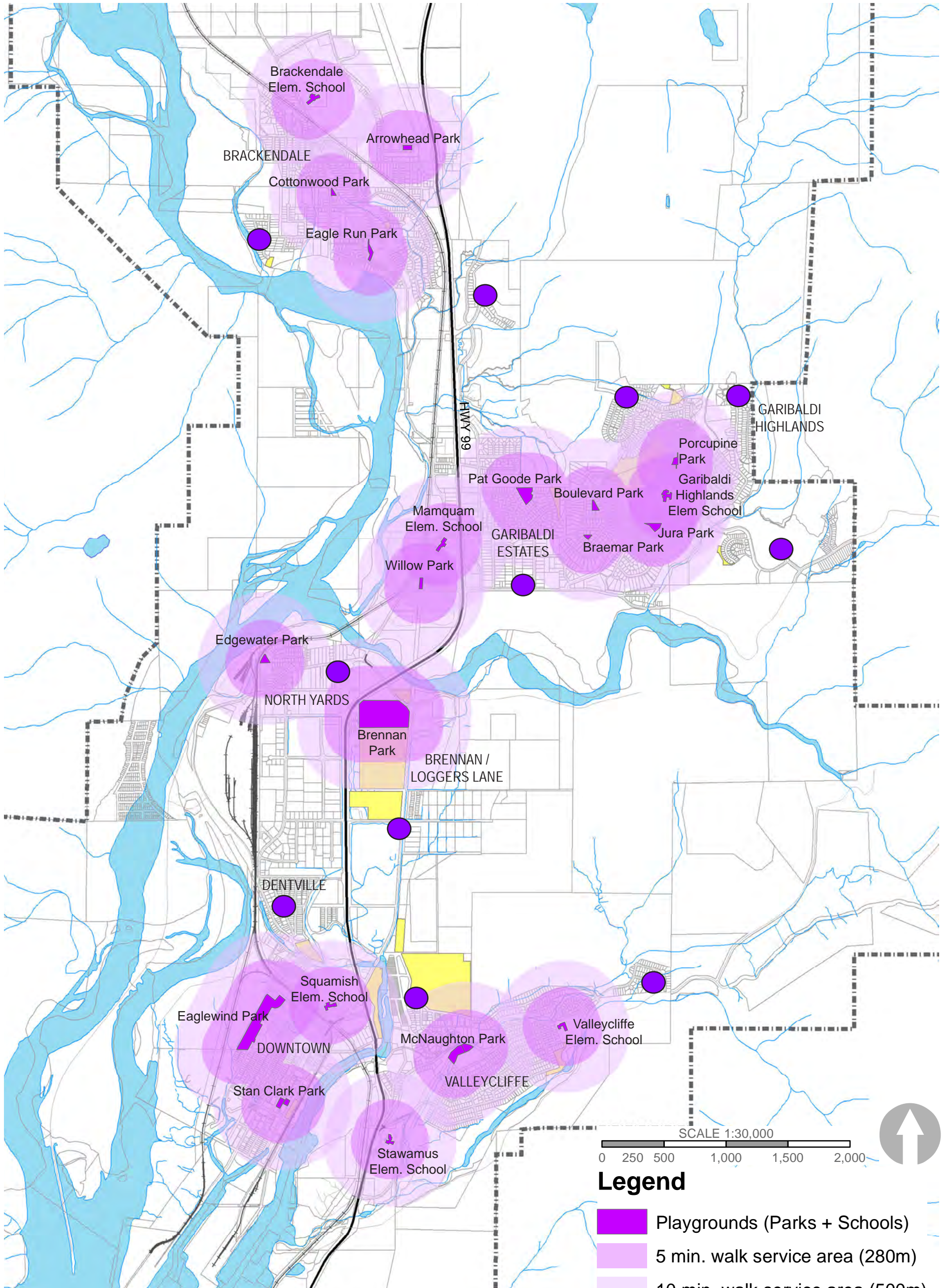




Legend

- Trails
- Waterfront Trails/Dykes
- The Spit + Training Dyke
- Developed Parks and Open Space
- Dedicated Parkland
- Conservation Areas
- Provincial Parks
- Brennan Park Rec Centre
- Brennan Park Concession Building
- Senior's Centre
- Youth Centre
- Squamish Adventure Centre
- Municipal Hall
- Schools
- Dist. of Squamish Boundary

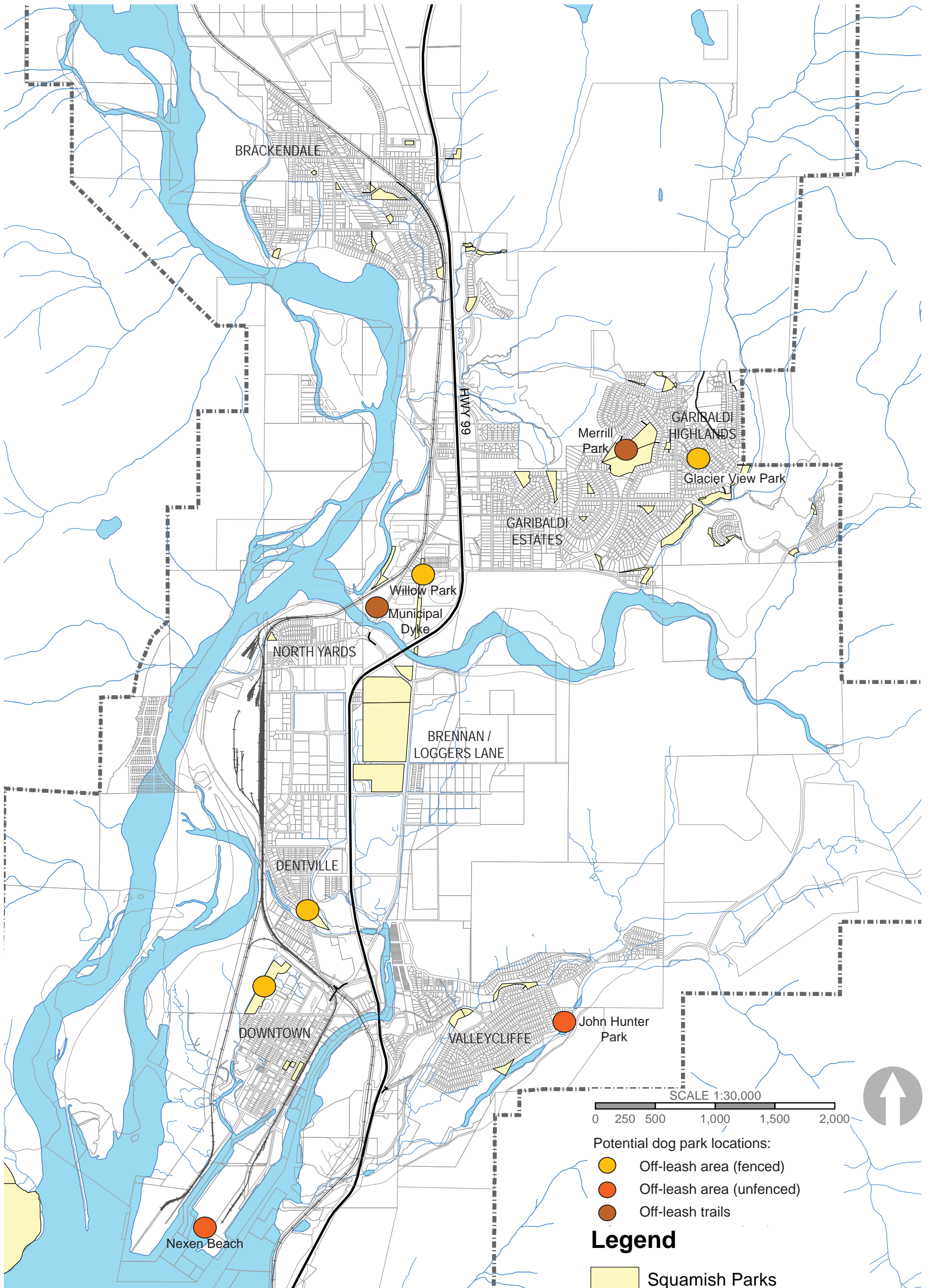




Existing playground service area gaps. New playgrounds should be considered within the vicinity of these locations, based on future development, demand, and public consultation. Some gap areas may not have suitable park land available.

Legend

- Playgrounds (Parks + Schools)
- 5 min. walk service area (280m)
- 10 min. walk service area (500m)
- Squamish Parks
- Dist. of Squamish Boundary



SCALE 1:30,000
 0 250 500 1,000 1,500 2,000

- Potential dog park locations:
- Off-leash area (fenced)
 - Off-leash area (unfenced)
 - Off-leash trails

Legend

- Squamish Parks
- Dist. of Squamish Boundary

